

# HI-TACAN Z RWY 18L

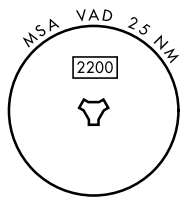
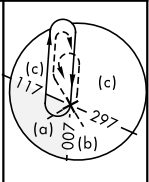
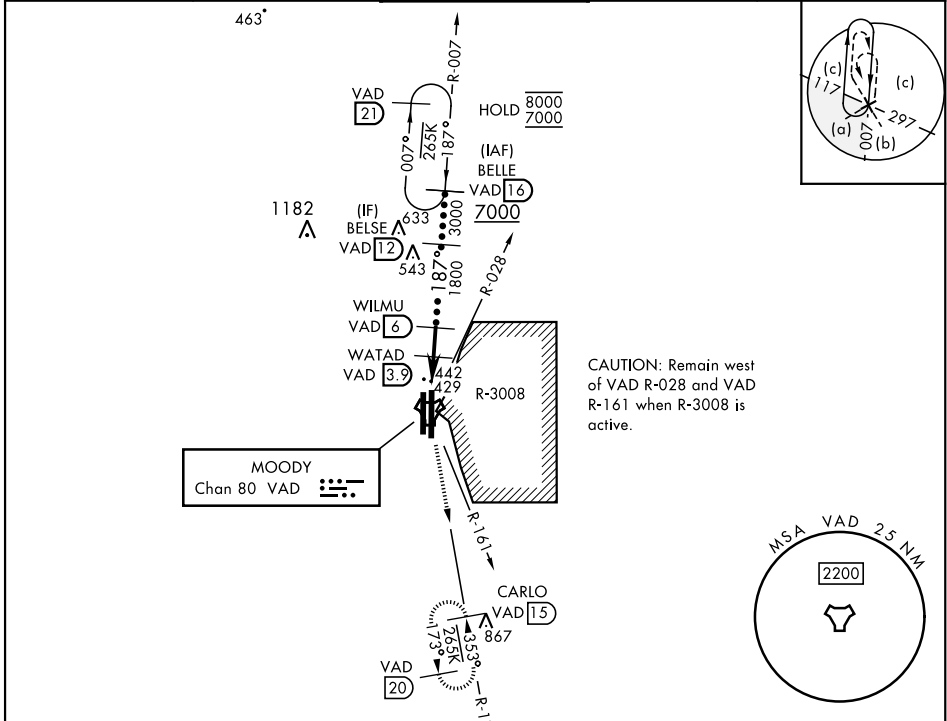
TACAN VAD Chan <b>80</b>	APCH CRS <b>187°</b>	Rwy Idg TDZE Arprt Elev	<b>9300</b> <b>233</b> <b>233</b>
-----------------------------	-------------------------	-------------------------------	---

[USAF]

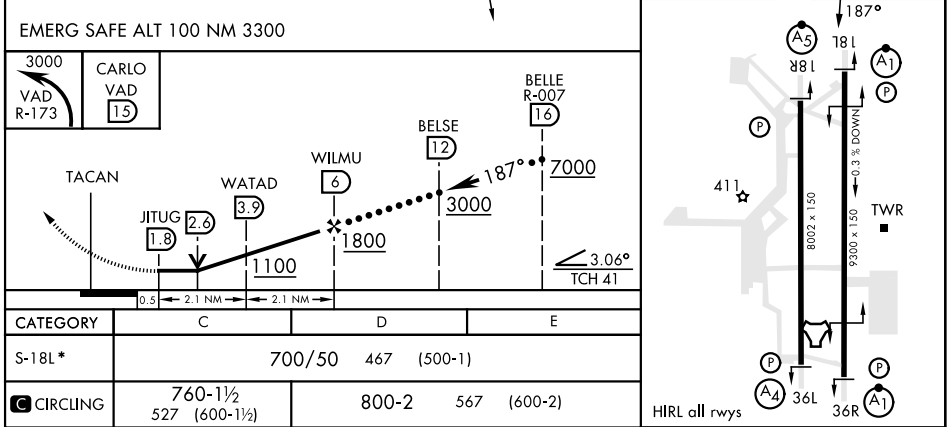
MOODY AFB (KVAD)

▼ \*When ALS inop, increase vis to 1 3/8 miles.
 
 MISSED APPROACH: Climb to 3000 on VAD TACAN R-173 to CARLO and hold.

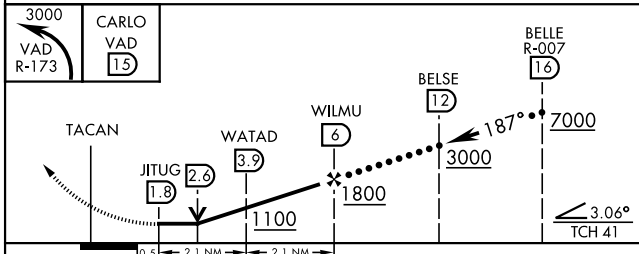
ATIS ★ <b>273.5</b>	VALDOSTA APP CON <b>126.6 285.6</b>	TOWER ★ <b>128.45 (CTAF) 257.625</b>	GND CON <b>138.95 275.8</b>	CLNC DEL <b>120.625 296.7</b>
------------------------	--	---	--------------------------------	----------------------------------



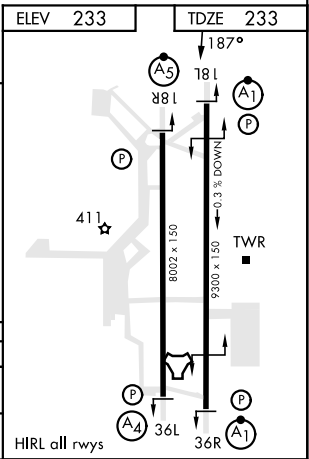
ELEV 233	TDZE 233
----------	----------



EMERG SAFE ALT 100 NM 3300



CATEGORY	C	D	E
S-18L*	700/50	467 (500-1)	
CIRCLING	760-1 1/2 527 (600-1 1/2)	800-2	567 (600-2)



# HI-TACAN Z RWY 18L

SE-4, 31 OCT 2024 to 28 NOV 2024

SE-4, 31 OCT 2024 to 28 NOV 2024