

WAAS CH <b>90299</b> <b>W20A</b>	APP CRS <b>202°</b>	Rwy ldg TDZE Apt Elev	<b>6527</b> <b>1194</b> <b>1194</b>
--	------------------------	-----------------------------	---

# RNAV (GPS) RWY 20

WALLA WALLA RGNL (ALW)

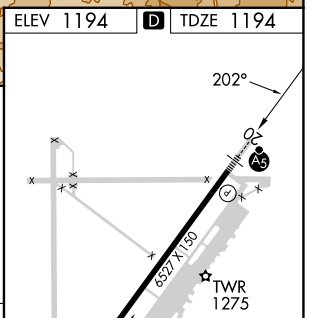
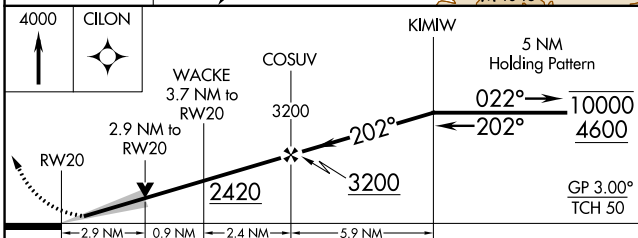
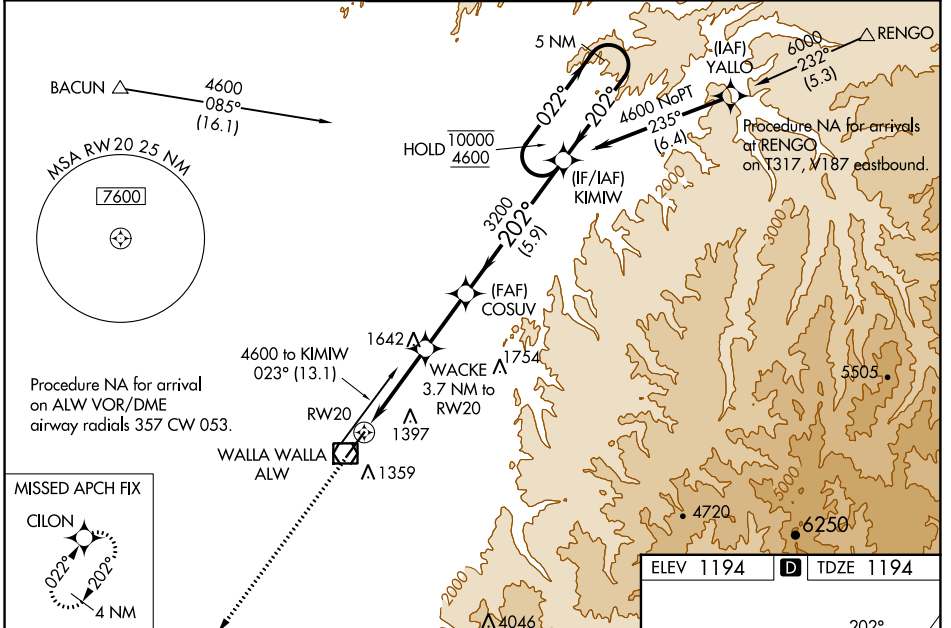
RNP APCH - GPS.

**⚠** For uncompensated Baro-VNAV systems, LNAV/VNAV NA below -11°C or above 54°C. For inop ALS, increase LNAV/VNAV visibility to 1% SM. \*RVR 1800 authorized with use of FD or AP or HUD to DA.

MALSRL

**MISSED APPROACH:**  
Climb to 4000 direct CILON and hold.

ASOS <b>135.875</b>	SPOKANE APP CON* <b>133.15 379.15</b>	WALLA WALLA TOWER* <b>118.5 (CTAF) 289.4</b>	GND CON <b>121.6 289.4</b>	UNICOM <b>122.95</b>
------------------------	--	---	-------------------------------	-------------------------



CATEGORY	A	B	C	D
LPV DA*	1394/24		200 (200-½)	
LNAV/VNAV DA	1773-1¼		579 (600-1¼)	
LNAV MDA	2160/40 966 (1000-¾)	2160/55 966 (1000-1)	2160-2½	966 (1000-2½)
CIRCLING	2160-1¼ 966 (1000-1¼)	2160-1½ 966 (1000-1½)	2160-3 966 (1000-3)	2300-3 1106 (1200-3)

REIL Rwy 2 **ⓐ**  
HIRL Rwy 2-20 **ⓑ**

NW-1, 31 OCT 2024 to 28 NOV 2024

NW-1, 31 OCT 2024 to 28 NOV 2024