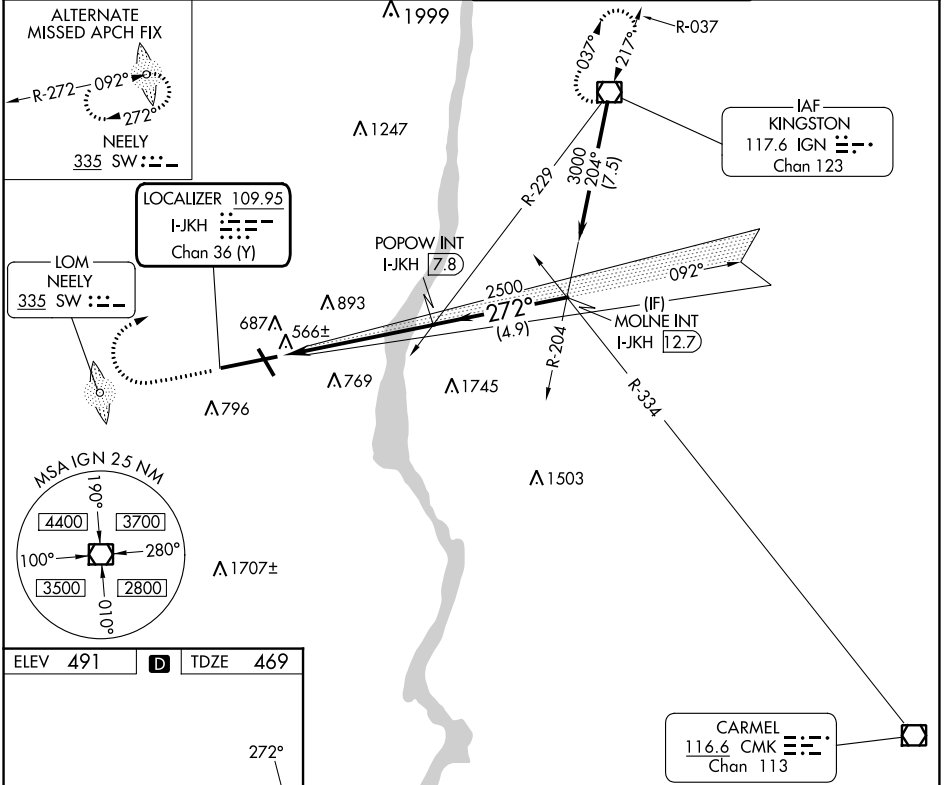


LOC/DME I-JKH 109.95 Chan 36 (Y)	APP CRS 272°	Rwy Idg 9817 TDZE 469 Apt Elev 491
---	------------------------	---

ILS or LOC RWY 27

NEW YORK STEWART INTL (SWF)

		MISSED APPROACH: Climb to 1600 then climbing right turn to 3000 direct IGN VOR/DME and hold.	
ATIS 124.575	NEW YORK APP CON 132.75 363.1	STEWART TOWER 121.0 254.4	GND CON 121.9



ELEV 491	D	TDZE 469			
TDZ/CL Rwy 9 HIRL Rwys 9-27 and 16-34 REIL Rwys 16, 27 and 34 FAF to MAP 6.1 NM					
Knots	60	90	120	150	180
Min:Sec	6:06	4:04	3:03	2:26	2:02

1600	3000	IGN	POPOW INT I-JKH 7.8	MOLNE INT I-JKH 12.7
* LOC only.				
I-JKH 1.7	I-JKH 2.8	2500	272°	3000
Procedure Turn NA				
GS 3.00° TCH 55				
1 NM 5.1 NM 4.9 NM				
CATEGORY	A	B	C	D
S-ILS 27	719-1 250 (300-1)			
S-LOC 27	840-1 371 (400-1)			840-1½ 371 (400-1½)
CIRCLING	1200-1 709 (800-1)		1200-2 709 (800-2)	1200-2¼ 709 (800-2¼)

NE-2, 31 OCT 2024 to 28 NOV 2024

NE-2, 31 OCT 2024 to 28 NOV 2024