

LOC I-GMX <b>111.55</b>	APP CRS <b>238°</b>	Rwy Idg <b>8016</b> TDZE <b>26</b> Apt Elev <b>32</b>
----------------------------	------------------------	---

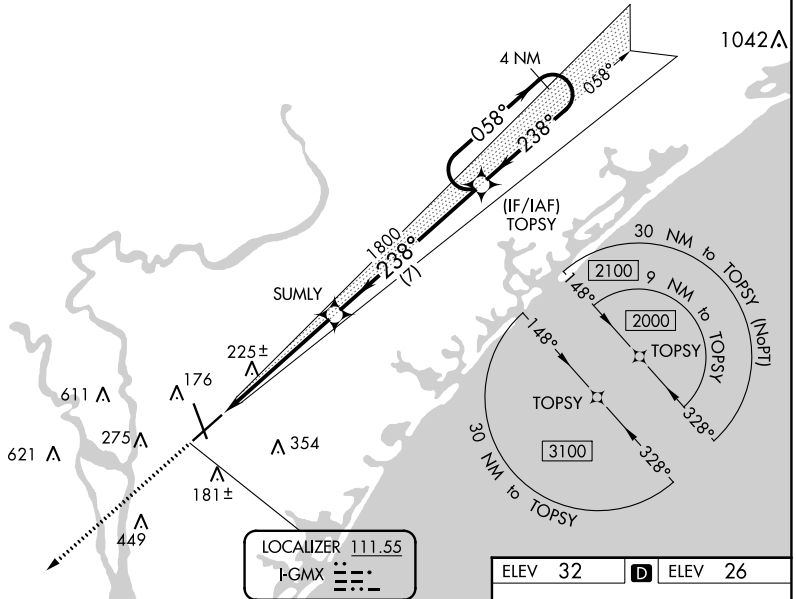
# ILS Z RWY 24

WILMINGTON INTL (ILM)

<p><b>RNAV 1-GPS required.</b> **RVR 1800 authorized with use of FD or AP or HUD to DA.</p>	<p>MALSR AS</p>	<p>MISSED APPROACH: Climb to 3100 direct LURKY and hold.</p>
---	---------------------	--

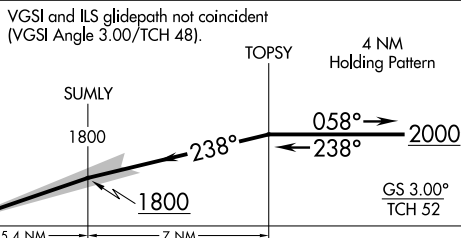
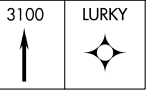
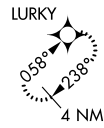
<p>ATIS <b>124.975</b></p>	<p>WILMINGTON APP CON * <b>118.25 284.65</b> (164°-343°) <b>135.75 317.425</b> (344°-163°)</p>	<p>WILMINGTON TOWER * <b>119.9</b> (CTAF) <b>239.3</b></p>	<p>GND CON <b>121.9 348.6</b></p>	<p>UNICOM <b>122.95</b></p>
--------------------------------	--	--	---------------------------------------	---------------------------------

## RNAV 1-GPS or RADAR REQUIRED

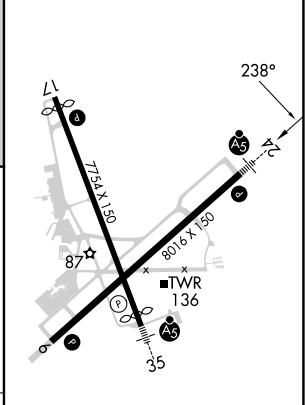


SE-2, 31 OCT 2024 to 28 NOV 2024

SE-2, 31 OCT 2024 to 28 NOV 2024



ELEV 32	D	ELEV 26
---------	---	---------



CATEGORY	A	B	C	D
S-ILS 24**	226/24 200 (200-1/2)			

HIRL Rwy 6-24 and 17-35  
REL Rwy 6 and 17