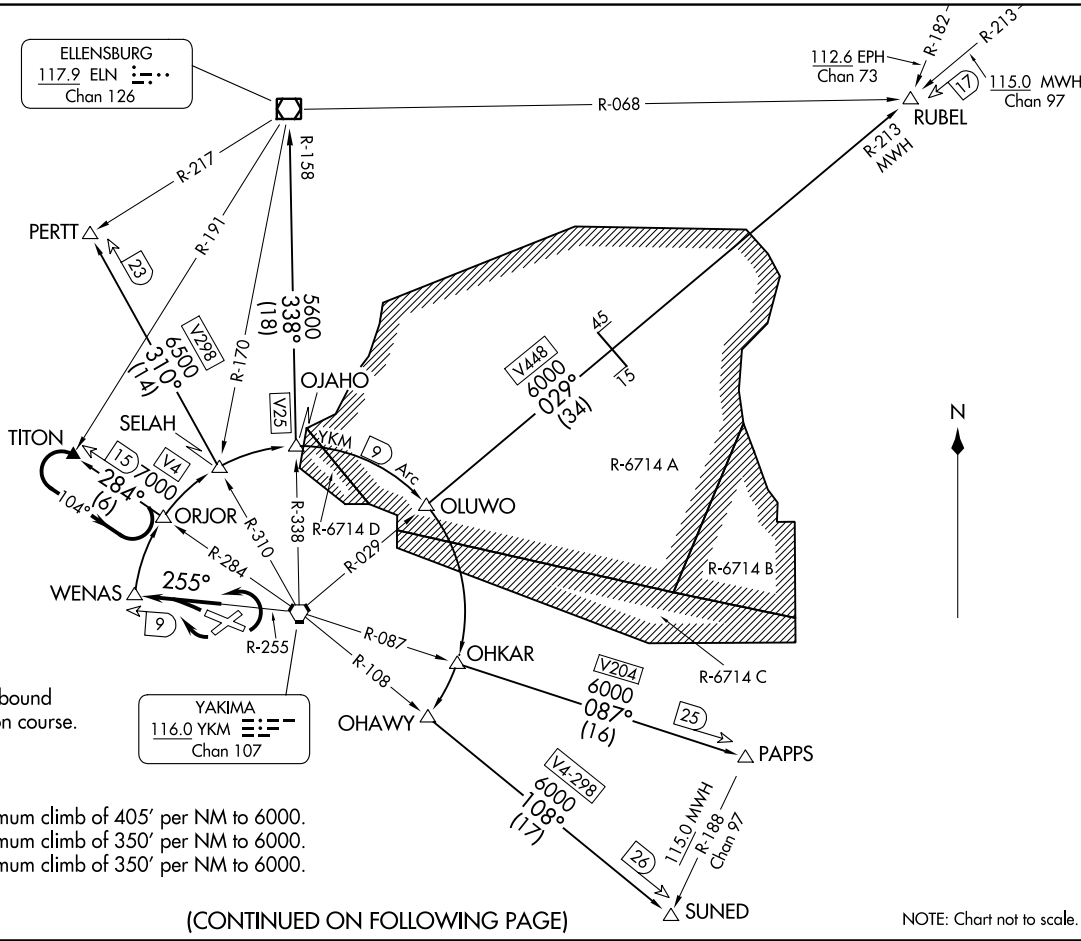


WENAS SEVEN DEPARTURE
(WENAS7.WENAS) 10NOV16

YAKIMA AIR TRML/MCALLISTER FLD (YKYM)
YAKIMA, WASHINGTON

SPOKANE DEP CON ★
123.8 263.15
ATIS
125.25
CLNC DEL
121.9
GND CON
121.9
YAKIMA TOWER ★
133.25 257.8



NOTE: DME required.

NOTE: TITON Transition:
Climb-in-hold, E, LT, 284° inbound
to 7000 before proceeding on course.

TAKEOFF MINIMUMS

- Rwy 4: NA - Obstacles
- Rwy 9: Standard with minimum climb of 405' per NM to 6000.
- Rwy 22: Standard with minimum climb of 350' per NM to 6000.
- Rwy 27: Standard with minimum climb of 350' per NM to 6000.

(CONTINUED ON FOLLOWING PAGE)

NOTE: Chart not to scale.

(WENAS7.WENAS) 23334
WENAS SEVEN DEPARTURE

AL-465 (FAA)

YAKIMA AIR TRML/MCALLISTER FLD (YKYM)
YAKIMA, WASHINGTON



DEPARTURE ROUTE DESCRIPTION

TAKEOFF RUNWAYS 9, 27: Climbing left turn thence. . . .

TAKEOFF RUNWAY 22: Climbing right turn thence. . . .

. . . .intercept and proceed on YKM VORTAC R-255 to WENAS/YKM 9 DME, then on assigned transition.

ELLENSBURG TRANSITION (WENAS7.ELN): From over WENAS DME Fix on YKM 9 DME Arc to OJAHO DME fix and YKM VORTAC R-338 and ELN VOR/DME R-158 to ELN VOR/DME.

PAPPS TRANSITION (WENAS7.PAPPS): From over WENAS DME Fix on YKM 9 DME Arc to OHKAR DME fix and YKM VORTAC R-087 to PAPPS INT.

PERTT TRANSITION (WENAS7.PERTT): From over WENAS DME Fix on YKM 9 DME Arc to SELAH DME fix and YKM VORTAC R-310 to PERTT INT.

RUBEL TRANSITION (WENAS7.RUBEL): From over WENAS DME Fix on YKM 9 DME Arc to OLUWO DME fix and YKM VORTAC R-029 and MWH VOR/DME R-213 to RUBEL INT.

SUNED TRANSITION (WENAS7.SUNED): From over WENAS DME Fix on YKM 9 DME Arc to OHAWY DME fix and YKM VORTAC R-108 to SUNED INT.

TITON TRANSITION (WENAS7.TITON): From over WENAS DME Fix on YKM 9 DME Arc to ORJOR DME fix and YKM VORTAC R-284 to TITON INT.

NW-1, 31 OCT 2024 to 28 NOV 2024

NW-1, 31 OCT 2024 to 28 NOV 2024