

ILS or LOC/DME RWY 23R

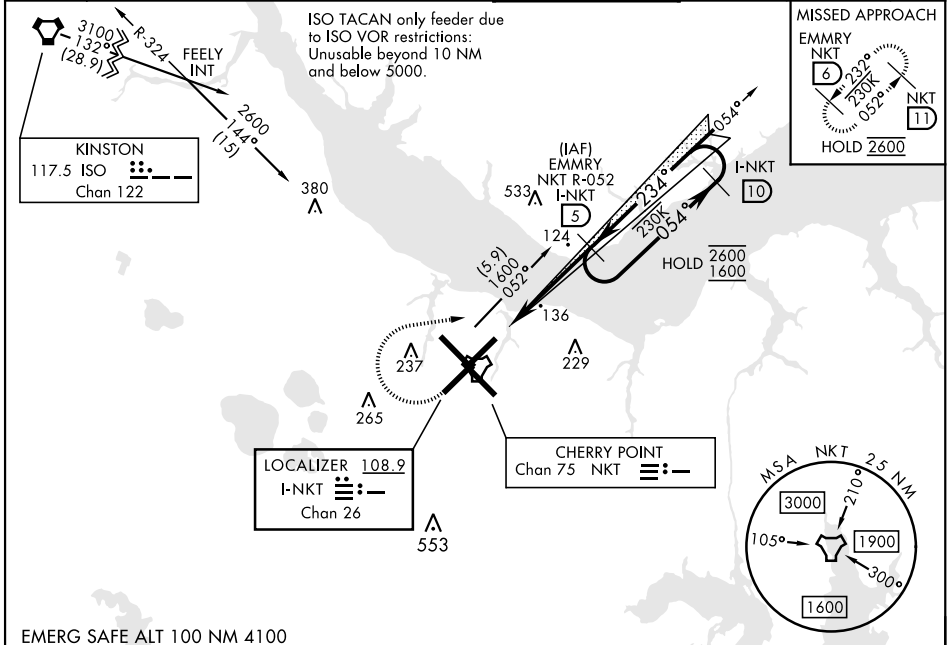
| | | | |
|---|-------------------------|---|-------------|
| LOC/DME I-NKT 108.9 Chan 26 | APCH CRS 234° | Rwy Idg TDZE 23 Arprt Elev 29 | 7552 |
|---|-------------------------|---|-------------|

[USN]

CHERRY POINT MCAS (CUNNINGHAM FLD) (KNKT)

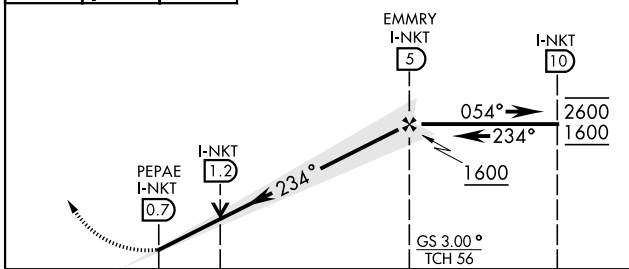
| | | |
|---|-----------|--|
| TACAN required * When ALS inop, increase vis to ¾ mile. ** When ALS inop, increase vis to 1 mile. | MALSR | MISSED APPROACH: Climb to 500, then climbing right turn to 2600 via NKT TACAN R-052 to EMMRY and hold. Continue climb in hold to 2600. |
|---|-----------|--|

| | | | | | | |
|--|--|---|-----------------------------|---|---|---------|
| ATIS 127.475 244.875 | (E) 119.75 (E) 132.575 (W) 119.35 | APP CON 360.775 (abv 2600') 299.6 (at/blw 2600') 377.175 (N) 124.1 268.7 | TOWER 121.3 340.2 | GND CON 128.625 239.025 | CLNC DEL 125.95 316.125 | ASR/PAR |
|--|--|---|-----------------------------|---|---|---------|



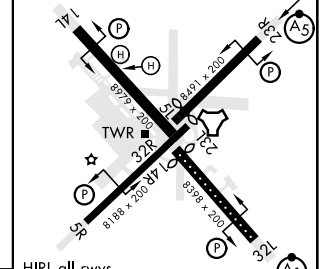
EMERG SAFE ALT 100 NM 4100

| | | | |
|-----|------|-------------|---|
| 500 | 2600 | EMMRY NKT 6 | VGSI and ILS glidepath not coincident (VGSI Angle 3.00/TCH 53). |
|-----|------|-------------|---|



| | |
|---------|---------|
| ELEV 29 | TDZE 23 |
|---------|---------|

Rwy 32R, 23L, 14R, 5L marked in center mat area.



HIRL all rwys
REIL Rwy 5L and 14R
Rwy 5L-23R Idg 7552'
Rwy 14R-32L Idg 7551'

| CATEGORY | FAF to MAP 4.3 NM | | | |
|-------------|-------------------|-------------|--------------|-------------|
| | A | B | C | D |
| S-ILS 23R* | 223-½ | | 200 | (200-½) |
| S-LOC 23R** | 400-½ | 377 (400-½) | 400-⅝ | 377 (400-⅝) |
| CIRCLING | 580-1 | 551 (600-1) | 580-1½ | 580-2 |
| | | | 551 (600-1½) | 551 (600-2) |

ILS or LOC/DME RWY 23R

SE-2, 31 OCT 2024 to 28 NOV 2024

SE-2, 31 OCT 2024 to 28 NOV 2024