

HI-TACAN RWY 14

VORTAC LMT 115.9 Chan 106	APCH CRS 134°	Rwy ldg 10,302 TDZE 4091 Arprt Elev 4095
---	-------------------------	--

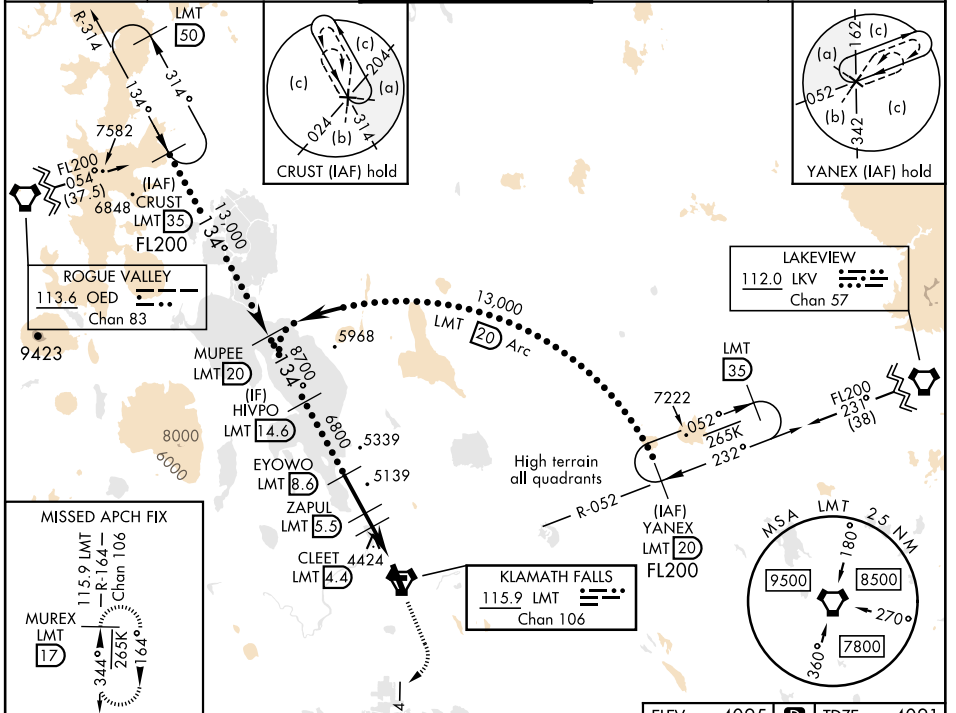
[USAF]

CRATER LAKE/KLAMATH RGNL (KLMT)

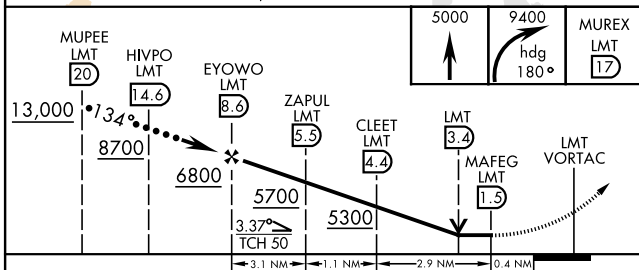
▼ *When ALS inop increase vis to 2½ miles.
**Circling not authorized for CAT DE NE of Rwy 14-32.

MALSF MISSED APPROACH: Climb to 5000 then climbing right turn to 9400 on heading 180° and LMT VORTAC R-164 to MUREX/LMT 17 DME and hold. Continue climb-in-hold to 9400.

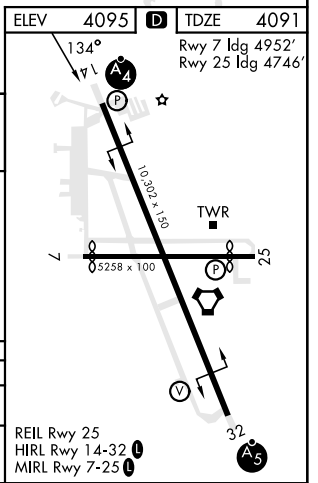
ATIS 126.5 263.0	KINGSLEY APP CON 123.675 270.8	KINGSLEY TOWER ★ 133.975 (CTAF) 257.8	GND CON 121.9 348.6	UNICOM 122.95
----------------------------	--	---	-------------------------------	-------------------------



NOT FOR CIVIL USE
EMERG SAFE ALT 100 NM 16,400



CATEGORY	C	D	E
S-14*	4860-2	769	(800-2)
☐ CIRCLING**	5420-3 1325 (1400-3)	5660-3 1565 (1600-3)	5700-3 1605 (1700-3)



HI-TACAN RWY 14

NW-1, 31 OCT 2024 to 28 NOV 2024

NW-1, 31 OCT 2024 to 28 NOV 2024