

LOC I-DRO <b>109.1</b>	APP CRS <b>027°</b>	Rwy Idg TDZE Apt Elev	<b>9201</b> <b>6643</b> <b>6689</b>
---------------------------	------------------------	-----------------------------	---

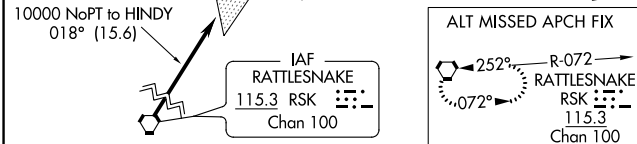
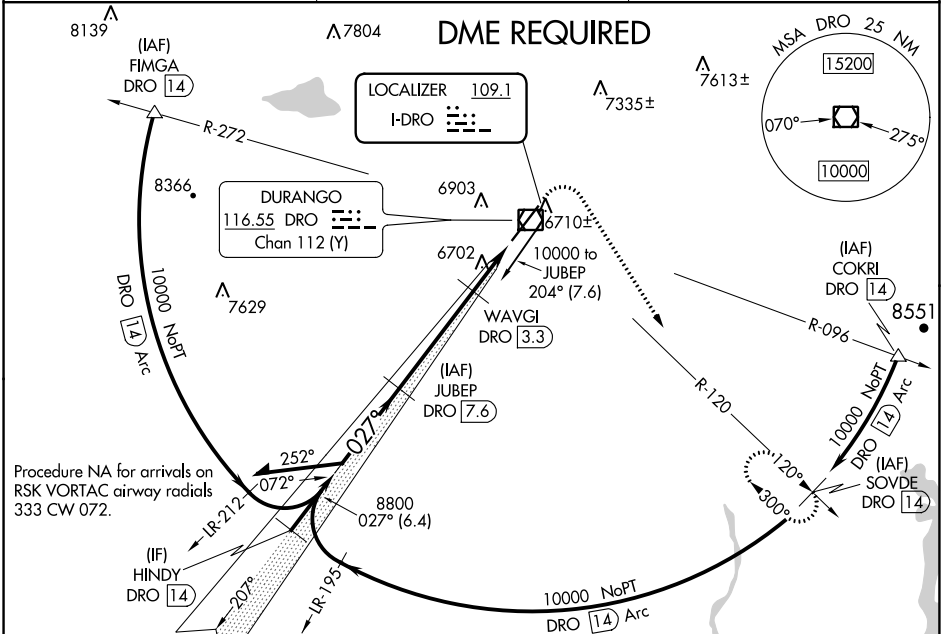
# ILS or LOC/DME RWY 3

DURANGO-LA PLATA COUNTY (DRO)

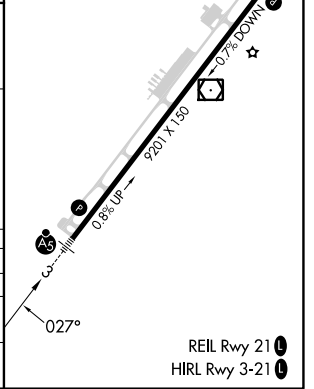
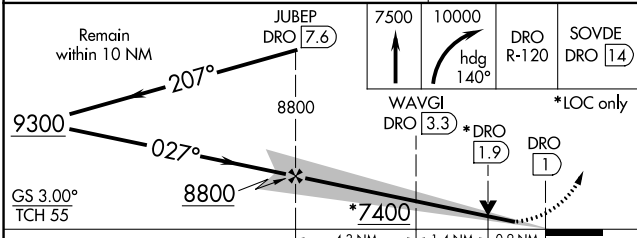
**NA** DME required. DME from DRO VOR/DME. Simultaneous reception of I-DRO and DRO VOR/DME required. For input MALSR, increase S-LOC 3 Cat C/D visibility to 7/8 mile.

**MALSR** MISSED APPROACH: Climb to 7500 then climbing right turn to 10000 on heading 140° and on DRO VOR/DME R-120 to SOVDE/DRO 14 DME and hold.

ASOS <b>120.625</b>	DENVER CENTER <b>118.575 348.7</b>	UNICOM <b>122.8 (CTAF)</b>
------------------------	---------------------------------------	-------------------------------



ELEV 6689	<b>D</b> TDZE 6643
-----------	--------------------



CATEGORY	A	B	C	D
S-ILS 3		6843-1/2	200 (200-1/2)	
S-LOC 3		6960-1/2	317 (300-1/2)	
<b>C</b> CIRCLING	7160-1 471 (500-1)	7220-1 531 (600-1)	7540-2 1/2 851 (900-2 1/2)	8140-3 1451 (1500-3)

SW-1, 31 OCT 2024 to 28 NOV 2024

SW-1, 31 OCT 2024 to 28 NOV 2024