

TACAN RWY 21L

TACAN SUU Chan 113	APCH CRS 213°	Rwy Idg 10,995 TDZE 58 Arprt Elev 63
------------------------------	-------------------------	---

[USAF]

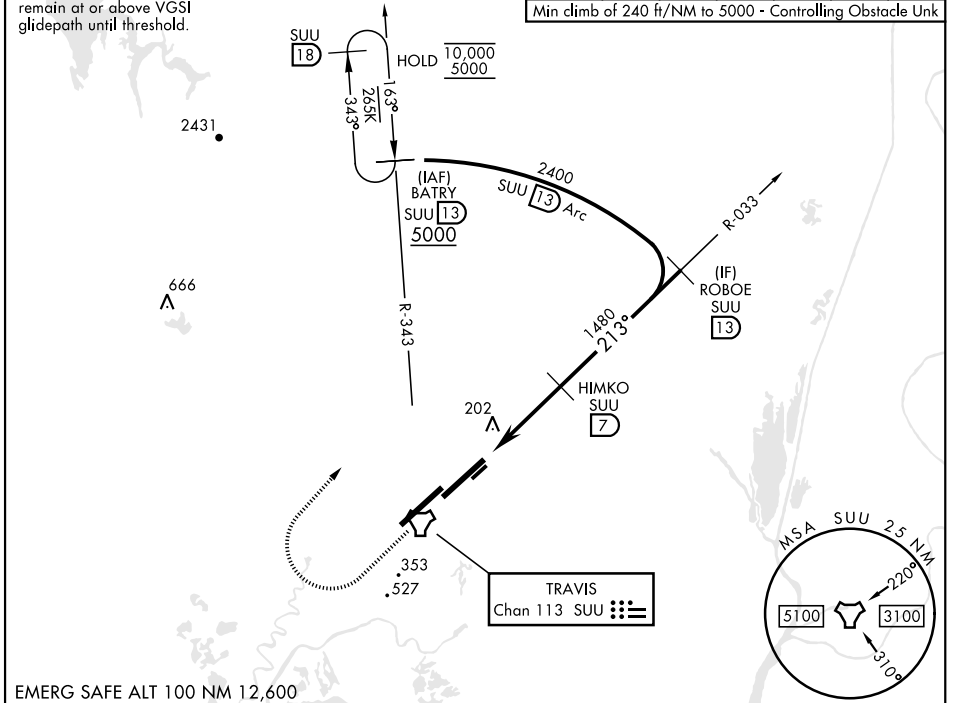
TRAVIS AFB (KSUU)

RADAR required ▼ *When ALS inop, increase CAT AB RVR to 55, vis to 1 mile, CAT CDE vis to 1½ miles. ** Circling not authorized NW of Rwy 3L-21R.	ALSF-2 	MISSED APPROACH: Climb to 2300 then climbing right turn to 5000 on heading 028° and SUU TACAN R-343 to BATRY/13 DME and hold.
--	------------	---

ATIS 135.55 292.125	APP CON 119.9 322.325 (S) 126.6 281.45 (N)	TOWER 120.75 254.4	GND CON 121.8 289.4	CLNC DEL 127.55 335.8
-------------------------------	--	------------------------------	-------------------------------	---------------------------------

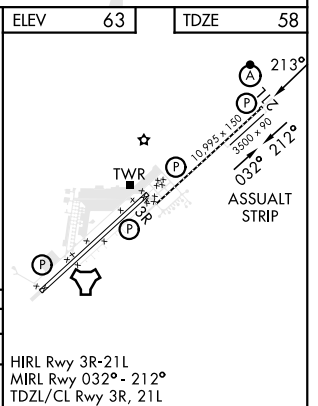
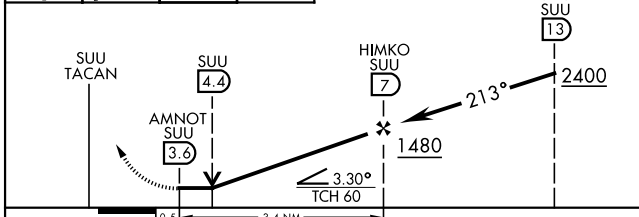
When circling to Rwy 3L at night, operational VGSI required, remain at or above VGSI glidepath until threshold.

Knots	60	120	180	240	300	360
V/V(fpm)	240	480	720	960	1200	1440
Min climb of 240 ft/NM to 5000 - Controlling Obstacle Nwk						



EMERG SAFE ALT 100 NM 12,600

2300	5000	SUU R-343	BATRY SUU 13	VGSI and descent angles not coincident (VGSI Angle 2.80/TCH 75).	ELEV 63	TDZE 58
------	------	-----------	--------------	--	---------	---------



CATEGORY	A	B	C	D	E
S-21L*	500/24 442 (500-½)		500/45 442 (500-¾)		
CIRCLING**	560-1 497 (500-1)	660-1 597 (600-1)	840-2¼ 777 (800-2¼)	1100-3 1037 (1100-3)	

HIRL Rwy 3R-21L
 MRL Rwy 032° - 212°
 TDZL/CL Rwy 3R, 21L

TACAN RWY 21L

SW-2, 31 OCT 2024 to 28 NOV 2024

SW-2, 31 OCT 2024 to 28 NOV 2024