

APP CRS	Rwy Idg	6511
084°	TDZE	1440
	Apt Elev	1442

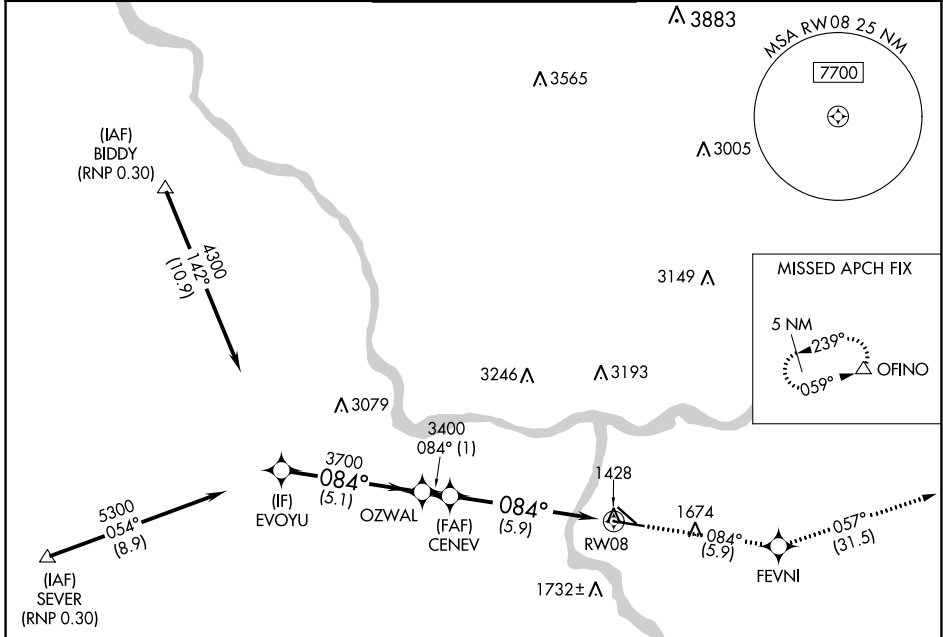
RNAV (RNP) Z RWY 8

LEWISTON/NEZ PERCE COUNTY (LWS)

GPS required. For uncompensated Baro-VNAV systems, procedure NA below -16°C (3°F) or above 46°C (115°F). When VGSI inop, procedure NA at night.

MISSED APPROACH: Climb to 6000 via track 084° to FEVNI and via track 057° to OFINO and hold.

ASOS 135.575	SEATTLE CENTER 123.95 290.55	LEWISTON TOWER ★ 119.4 (CTAF) 0 318.8	GND CON 121.9	UNICOM 122.95
------------------------	--	---	-------------------------	-------------------------

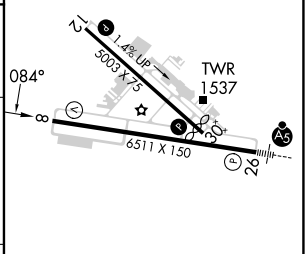
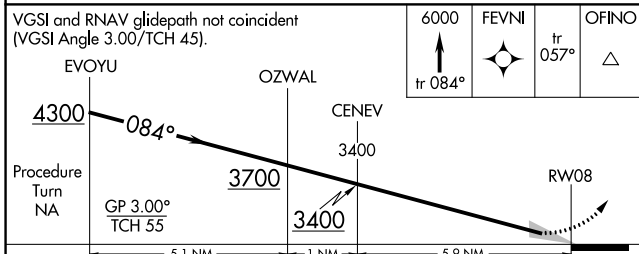


NW-1, 31 OCT 2024 to 28 NOV 2024

NW-1, 31 OCT 2024 to 28 NOV 2024

Procedure NA for arrivals at SEVER via V187 westbound.

ELEV 1442	D TDZE 1440
-----------	--------------------



CATEGORY	A	B	C	D
RNP 0.30 DA	1752-1 312 (400-1)			

AUTHORIZATION REQUIRED

- REIL Rwy 8 **1**
- REIL Rwy 12
- HIRL Rwy 8-26
- MIRL Rwy 12-30