

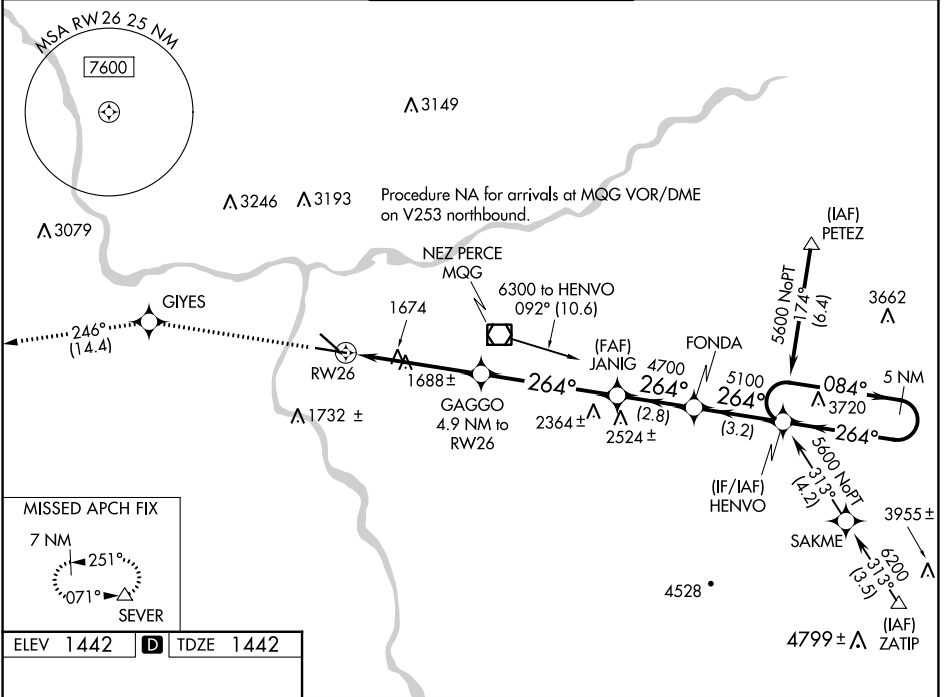
WAAS CH <b>78012</b> <b>W26A</b>	APP CRS <b>264°</b>	Rwy Idg TDZE Apt Elev	<b>6511</b> <b>1442</b> <b>1442</b>
--	------------------------	-----------------------------	---

# RNAV (GPS) Y RWY 26

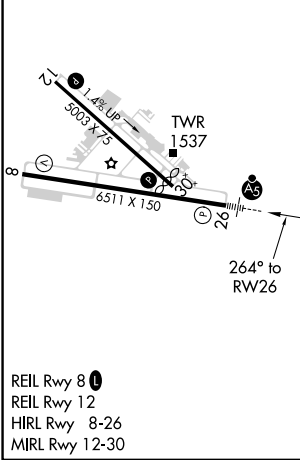
LEWISTON/NEZ PERCE COUNTY (LWS)

	For uncompensated Baro-VNAV systems, LNAV/VNAV NA below -17°C (2°F) or above 47°C (116°F). DME/DME RNP-0.3 NA.	MALSR 	MISSED APPROACH: Climb to 7000 direct GIYES and on track 246° to SEVER and hold, continue climb-in-hold to 7000.

ASOS <b>135.575</b>	SEATTLE CENTER <b>123.95 290.55</b>	LEWISTON TOWER ★ <b>119.4 (CTAF) 0 318.8</b>	GND CON <b>121.9</b>	UNICOM <b>122.95</b>
------------------------	--	---	-------------------------	-------------------------



ELEV 1442	<b>D</b>	TDZE 1442
-----------	----------	-----------



7000	GIYES	SEVER	VGSI and RNAV glidepath not coincident (VGSI Angle 3.00/TCH 51).	
↑	✧	tr 246°	5 NM Holding Pattern	
*LNAV only				
*1.4 NM to RW26		GAGGO 4.9 NM to RW26	JANIG 4700	FONDA 5100
*3060		264°		084° → 5600
← 264°		← 264°		GP 3.00° TCH 51
-1.4		-3.5 NM	-4.9 NM	-2.8 NM
-3.2 NM				
CATEGORY	A	B	C	D
LPV DA		1642-1/2	200 (200-1/2)	
LNAV/VNAV DA		1962-1/4	520 (600-1/4)	
LNAV MDA	1940-1/2	498 (500-1/2)	1940-1	498 (500-1)
CIRCLING	2000-1	558 (600-1)	2280-2 1/2 838 (900-2 1/2)	2500-3 1058 (1100-3)

NW-1, 31 OCT 2024 to 28 NOV 2024

NW-1, 31 OCT 2024 to 28 NOV 2024