

(BEXGO5.BEXGO) 24249

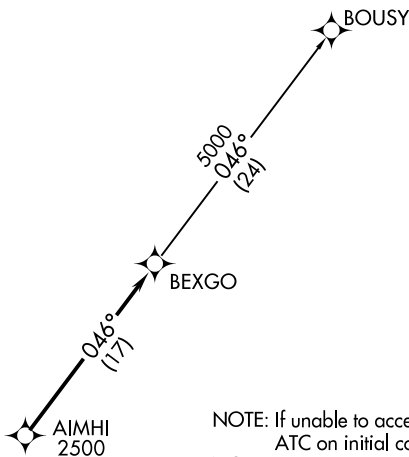
AL-516 (FAA)

RALEIGH-DURHAM INTL (RDU)
RALEIGH/DURHAM, NORTH CAROLINA

BEXGO FIVE DEPARTURE (RNAV)

D-ATIS
123.8
CLNC DEL
120.1
CPDLC
GND CON
121.9 348.6 (EAST)
(Rwys 5R-23L, 14-32)
121.7 348.6 (WEST)
(Rwy 5L-23R)
RALEIGH TOWER
127.45 257.8 (EAST)
(Rwys 5R-23L, 14-32)
119.3 257.8 (WEST)
(Rwy 5L-23R)
RALEIGH DEP CON
132.35 256.9

**TOP ALTITUDE:
(JETS) 6000
(PROPS) ASSIGNED BY ATC**



NOTE: If unable to accept climb rate, advise ATC on initial contact.
NOTE: RNAV 1.
NOTE: DME/DME/IRU or GPS required.
NOTE: RADAR required.

TAKEOFF MINIMUMS

Rwys 5L/R: Standard.

Rwy 14: Standard with minimum climb of 310' per NM to 1000.

Rwy 23L: Standard with minimum climb of 250' per NM to 2300.

Rwy 23R: Standard with minimum climb of 240' per NM to 2100.

Rwy 32: 300-1.



NOTE: Chart not to scale.



DEPARTURE ROUTE DESCRIPTION

TAKEOFF RUNWAYS 5L/R, 14, 23L/R, 32: Climb on assigned heading for RADAR vectors to cross AIMHI at or above 2500, thence. . . .

. . . .on track 046° to BEXGO. Turbojets maintain 6000, propellers maintain altitude assigned by ATC. Expect clearance to filed altitude within ten minutes after departure.

BOUSY TRANSITION (BEXGO5.BOUSY)

BEXGO FIVE DEPARTURE (RNAV)

(BEXGO5.BEXGO) 02DEC21

RALEIGH/DURHAM, NORTH CAROLINA
RALEIGH-DURHAM INTL (RDU)

SE-2, 31 OCT 2024 to 28 NOV 2024

SE-2, 31 OCT 2024 to 28 NOV 2024