

LOC/DME I-DMP <b>111.7</b> Chan <b>54</b>	APP CRS <b>234°</b>	Rwy Idg TDZE Apt Elev <b>10000</b> <b>409</b> <b>435</b>
---	------------------------	---

# ILS or LOC RWY 23R

RALEIGH-DURHAM INTL (RDU)

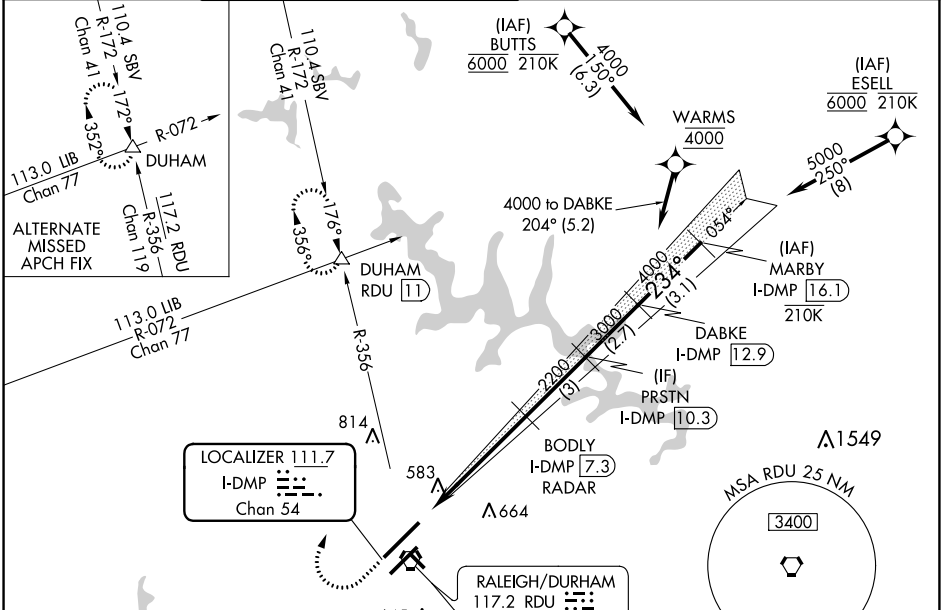
RNAV 1-DME/DME/IRU or GPS or RADAR required for procedure entry. RADAR or DME required for LOC only.

Simultaneous approach authorized. For inop ALS increase S-LOC 23R Cat C/D visibility to 1/2 SM.

ALSF-2

MISSED APPROACH: Climb to 1000 then climbing right turn to 2200 on RDU VORTAC R-356 to DUHAM INT/RDU 11 DME and hold.

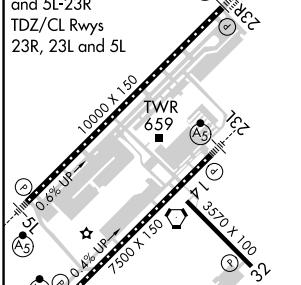
D-ATIS <b>123.8</b>	RALEIGH APP CON <b>127.675 307.9</b>	(EAST) RALEIGH TOWER (WEST) <b>127.45 257.8</b> <b>119.3 257.8</b> Rwys 5R-23L and 14-32 Rwy 5L-23R	(EAST) GND CON (WEST) <b>121.9 348.6</b> <b>121.7 348.6</b> Rwys 5R-23L and 14-32 Rwy 5L-23R	CLNC DEL <b>120.1</b>	CPDLC
------------------------	---	---	--	--------------------------	-------



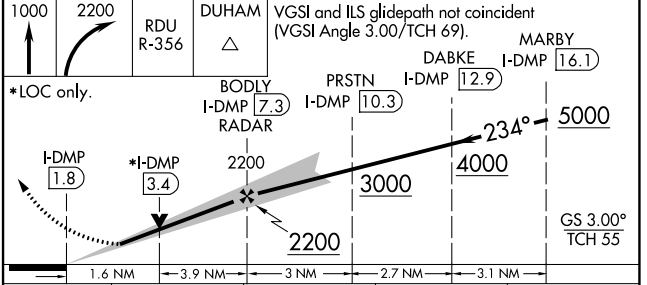
SE-2, 31 OCT 2024 to 28 NOV 2024

SE-2, 31 OCT 2024 to 28 NOV 2024

ELEV <b>435</b>	TDZE <b>409</b>
REIL Rwy 32	MIRL Rwy 14-32
HIRL Rwys 5R-23L and 5L-23R	TDZ/CL Rwys 23R, 23L and 5L



FAF to MAP 5.5 NM					
Knots	60	90	120	150	180
Min:Sec	5:30	3:40	2:45	2:12	1:50



CATEGORY	A				B				C				D			
S-ILS 23R	609/18 200 (200-1/2)															
S-LOC 23R	980/24 571 (600-1/2)				980-1 571 (600-1 1/4)											
CIRCLING	980-1 545 (600-1)				1020-1 585 (600-1 1/4)				1180-2 745 (800-2 1/2)							