

(TAQLE.TAQLE2) 23278

AL-516 (FAA)

RALEIGH-DURHAM INTL (RDU)
RALEIGH/DURHAM, NORTH CAROLINA

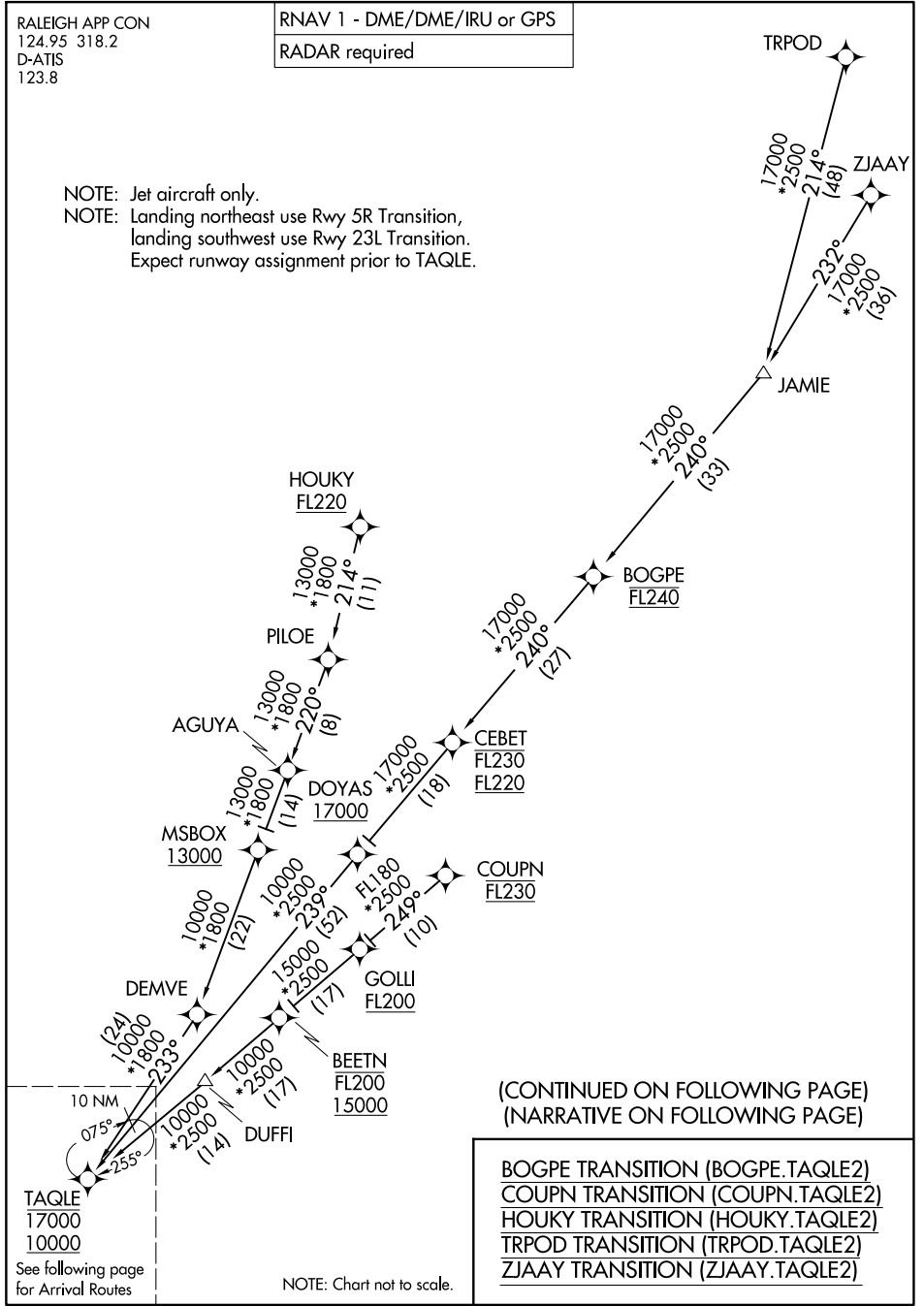
TAQLE TWO ARRIVAL (RNAV) Transition Routes

RALEIGH APP CON
124.95 318.2
D-ATIS
123.8

RNAV 1 - DME/DME/IRU or GPS

RADAR required

NOTE: Jet aircraft only.
NOTE: Landing northeast use Rwy 5R Transition,
landing southwest use Rwy 23L Transition.
Expect runway assignment prior to TAQLE.



(CONTINUED ON FOLLOWING PAGE)
(NARRATIVE ON FOLLOWING PAGE)

- BOGPE TRANSITION (BOGPE.TAQLE2)
- COUPN TRANSITION (COUPN.TAQLE2)
- HOUKY TRANSITION (HOUKY.TAQLE2)
- TRPOD TRANSITION (TRPOD.TAQLE2)
- ZJAAY TRANSITION (ZJAAY.TAQLE2)

NOTE: Chart not to scale.

SE-2, 31 OCT 2024 to 28 NOV 2024

SE-2, 31 OCT 2024 to 28 NOV 2024

TAQLE TWO ARRIVAL (RNAV) Transition Routes
(TAQLE.TAQLE2) 05OCT23

RALEIGH/DURHAM, NORTH CAROLINA
RALEIGH-DURHAM INTL (RDU)

(TAQLE.TAQLE2) 23278

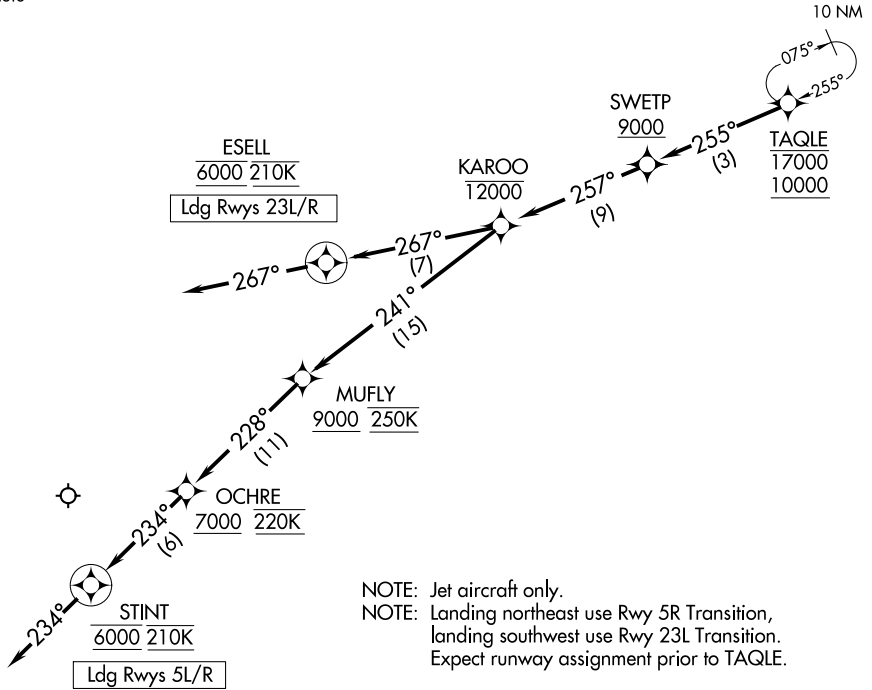
AL-516 (FAA)

RALEIGH-DURHAM INTL (RDU)
RALEIGH/DURHAM, NORTH CAROLINA

TAQLE TWO ARRIVAL (RNAV) Arrival Routes

RALEIGH APP CON
124.95 318.2
D-ATIS
123.8

RNAV 1 - DME/DME/IRU or GPS
RADAR required



NOTE: Jet aircraft only.
NOTE: Landing northeast use Rwy 5R Transition, landing southwest use Rwy 23L Transition. Expect runway assignment prior to TAQLE.

NOTE: Chart not to scale.

ARRIVAL ROUTE DESCRIPTION

From TAQLE on track 255° to cross SWETP at or above 9000, then on track 257° to cross KAROO at or below 12000.

LANDING RUNWAYS 5L/R: From KAROO on track 241° to cross MUFLY at or above 9000 and at 250K, then on track 228° to cross OCHRE at or above 7000 and at 220K, then on track 234° to cross STINT at 6000 and at 210K, then on track 234°. Expect RNP RWY 5R approach. Non-RNP aircraft: Expect RADAR vectors to final approach course.

LANDING RUNWAYS 23L/R: From KAROO on track 267° to cross ESELL at 6000 and at 210K, then on track 267°. Expect ILS or RNAV RWY 23L/R approach.

TAQLE TWO ARRIVAL (RNAV) Arrival Routes
(TAQLE.TAQLE2) 05OCT23

RALEIGH/DURHAM, NORTH CAROLINA
RALEIGH-DURHAM INTL (RDU)

SE-2, 31 OCT 2024 to 28 NOV 2024

SE-2, 31 OCT 2024 to 28 NOV 2024