

VOR/DME HBU 114.9 Chan 96	APP CRS 031°	Rwy Idg TDZE Apt Elev N/A N/A 7680
---	------------------------	--

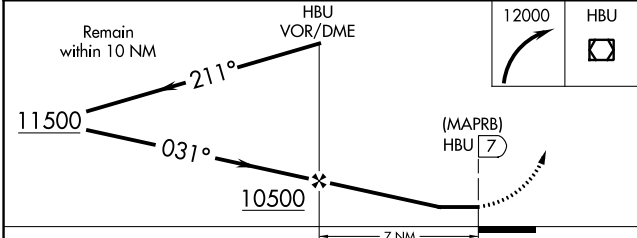
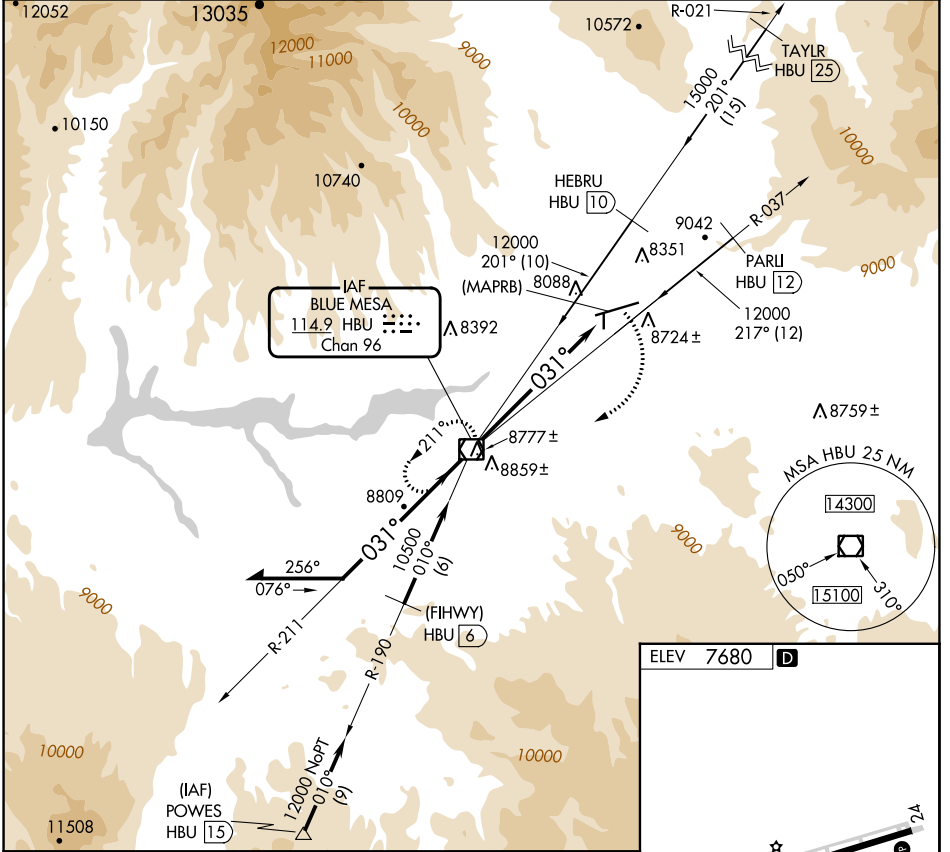
VOR or GPS-A

GUNNISON-CRESTED BUTTE RGNL (GUC)

Procedure NA when airport closed except by prior arrangement.
 Circling NA to Rws 17 and 35.

MISSED APPROACH: Climbing right turn to 12000 direct HBU VOR/DME and hold.

AWOS-3PT 135.075	DENVER CENTER 124.5 350.25	UNICOM 122.7 (CTAF)
----------------------------	--------------------------------------	-------------------------------



ELEV 7680	D			
HIRL Rwy 6-24 REIL Rwy 24				
FAF to MAP 7 NM				
CATEGORY	A B C D			
CIRCLING	9260-2 1580 (1600-2)	9340-2 1660 (1700-2)	9540-3 1860 (1900-3)	10040-3 2360 (2400-3)
	Knots 60 90 120 150 180	Min:Sec 7:00 4:40 3:30 2:48 2:20		

SW-1, 31 OCT 2024 to 28 NOV 2024

SW-1, 31 OCT 2024 to 28 NOV 2024