

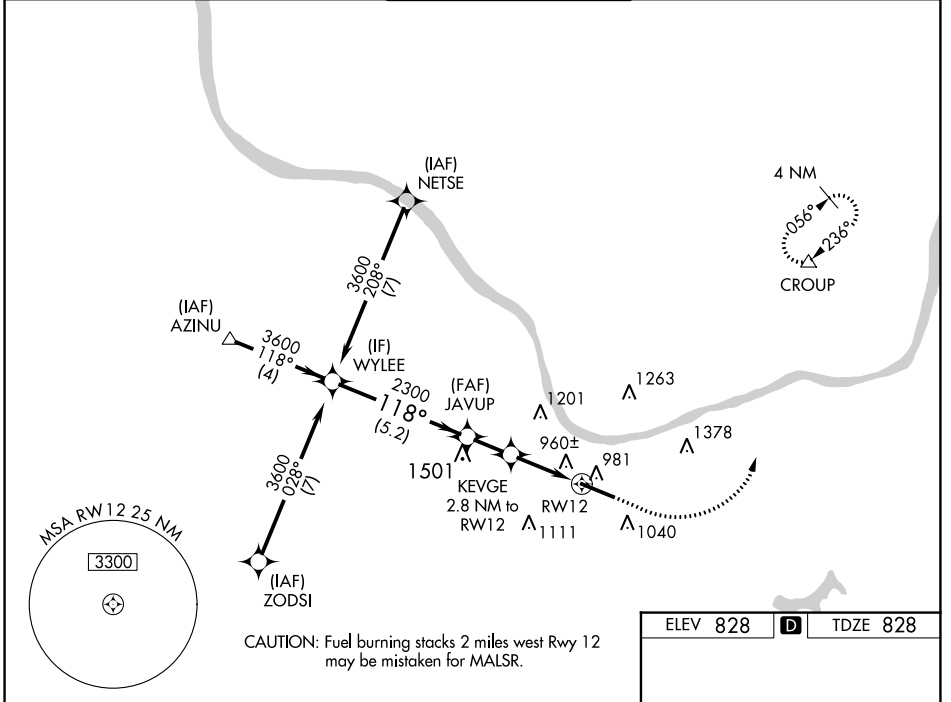
WAAS CH <b>45699</b> <b>W12A</b>	APP CRS <b>118°</b>	Rwy Idg TDZE Apt Elev	<b>6516</b> <b>828</b> <b>828</b>
--	------------------------	-----------------------------	---

# RNAV (GPS) RWY 12

TRI-STATE/MILTON J FERGUSON FLD (HTS)

RNP APCH - GPS.	MALSR	MISSED APPROACH: Climb to 1700 then climbing left turn to 4000 direct CROUP and hold, continue to climb-in-hold to 4000.
<p>▼ For uncompensated Baro-VNAV systems, LNAV/VNAV NA below -14°C or above 54°C.</p> <p>▲ For inop ALS, increase LNAV/VNAV all Cats visibility to RVR 4500.</p> <p>* RVR 1800 authorized with use of FD or AP or HUD to DA.</p>		

ATIS <b>125.2</b>	HUNTINGTON APP CON <b>119.75 270.1</b>	HUNTINGTON TOWER <b>118.5 270.1</b>	GND CON <b>121.9</b>	CLNC DEL <b>118.05</b>
----------------------	---	--	-------------------------	---------------------------



NE-4, 31 OCT 2024 to 28 NOV 2024

NE-4, 31 OCT 2024 to 28 NOV 2024

ELEV 828	<b>D</b>	TDZE 828
----------	----------	----------

	WYLEE	JAVUP	KEVGE 2.8 NM to RW12	1700	4000	CROUP
	3600	2300	1760	↑	↻	△
	GP 3.00° TCH 56	118°	2300	1.1 NM to RW12		
			1760	↓		
	5.2 NM	1.7 NM	1.7 NM	1.1 NM		
CATEGORY	A	B	C	D		
LPV DA*		1028/24	200 (200-½)			
LNAV/VNAV DA		1121/24	293 (300-½)			
LNAV MDA	1220/24	392 (400-½)	1220/35	392 (400-⅝)		
CIRCLING	1300-1 472 (500-1)	1380-1 552 (600-1)	1520-2 692 (700-2)	1740-3 912 (1000-3)		

