

OMAHA, NEBRASKA

ILS or LOC RWY 13

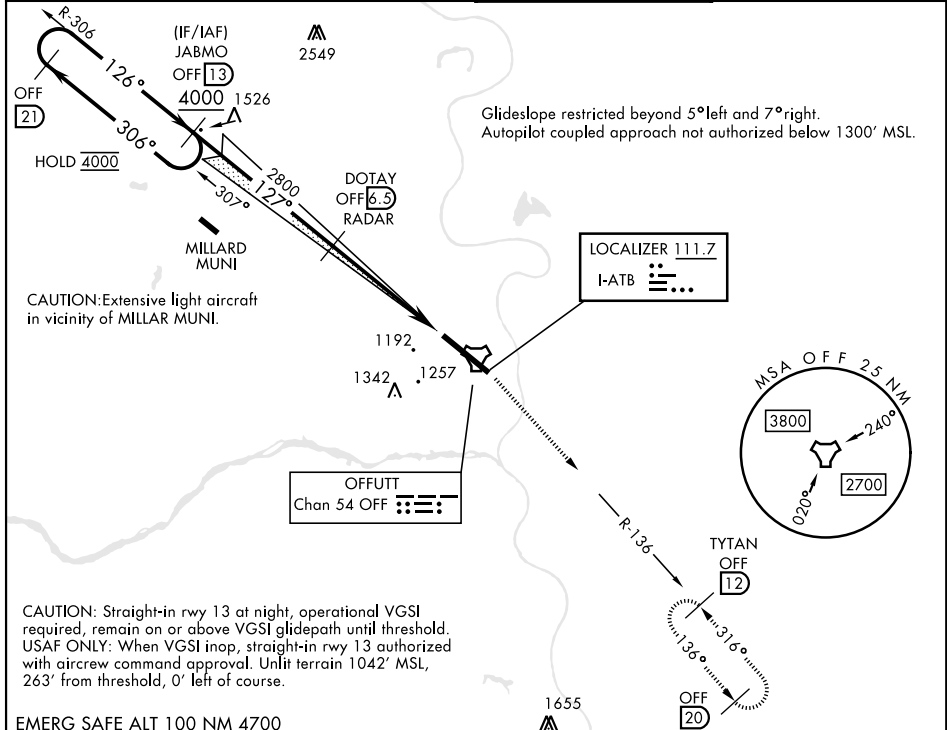
LOC I-ATB 111.7	APCH CRS 127°	Rwy ldg 10,695 TDZE 1048 Arprt Elev 1048
---------------------------	-------------------------	---

[USAF]

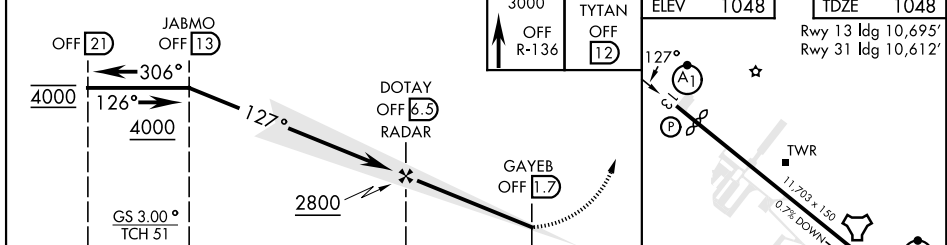
OFFUTT AFB (KOFF)

RADAR or DME required		ALSF-1 	MISSED APPROACH: Climb to 3000 via OFF TACAN R-136 to TYTAN and hold.
<p>▼ * When ALS inop, increase CAT AB RVR to 55, vis to 1 mile; CAT CDE vis to 1 3/8 miles.</p> <p>** Circling not authorized N of Rwy 13-31.</p>			

ATIS 126.025 273.5	OMAHA APP CON 120.1 354.05 (W) 124.5 263.0 (E)	TOWER 123.7 279.625	GND CON 121.7 289.4
------------------------------	--	-------------------------------	-------------------------------



EMERG SAFE ALT 100 NM 4700



CATEGORY	A	B	C	D	E	ELEV 1048	TDZE 1048
S-ILS 13	1298/50		250	(300-1)		Rwy 13 ldg 10,695' Rwy 31 ldg 10,612'	
S-LOC 13*	1560/50 512 (600-1)		1560/55 512 (600-1)		HIRL Rwy 13-31 Rwy 13-31 ALS nstd		
FAF to MAP 4.9 NM							
CIRCLING**	1560-1 512 (600-1)		1660-1 3/4 612 (700-134)		1940-3 892 (900-3)		
	Knots	60	90	120	150	180	
	Min:Sec	4:54	3:16	2:27	1:58	1:38	

OMAHA, NEBRASKA

41° 07' N-95° 54' W

OFFUTT AFB (KOFF)

Amdt 1 18APR24

ILS or LOC RWY 13

NC-2, 31 OCT 2024 to 28 NOV 2024

NC-2, 31 OCT 2024 to 28 NOV 2024