

CLOUD ONE ARRIVAL

AL-545 (FAA)

PALM SPRINGS, CALIFORNIA

SOCAL APP CON
 126.7 370.95
 135.275 251.1
 PSP ATIS
 124.65
 TRM ASOS
 118.325
 PALM SPRINGS TOWER*
 119.7 377.05
 BERMUDA DUNES UNICOM
 122.8
 JACQUELINE COCHRAN UNICOM
 123.0

GOFFS
 114.4 GFS
 Chan 91

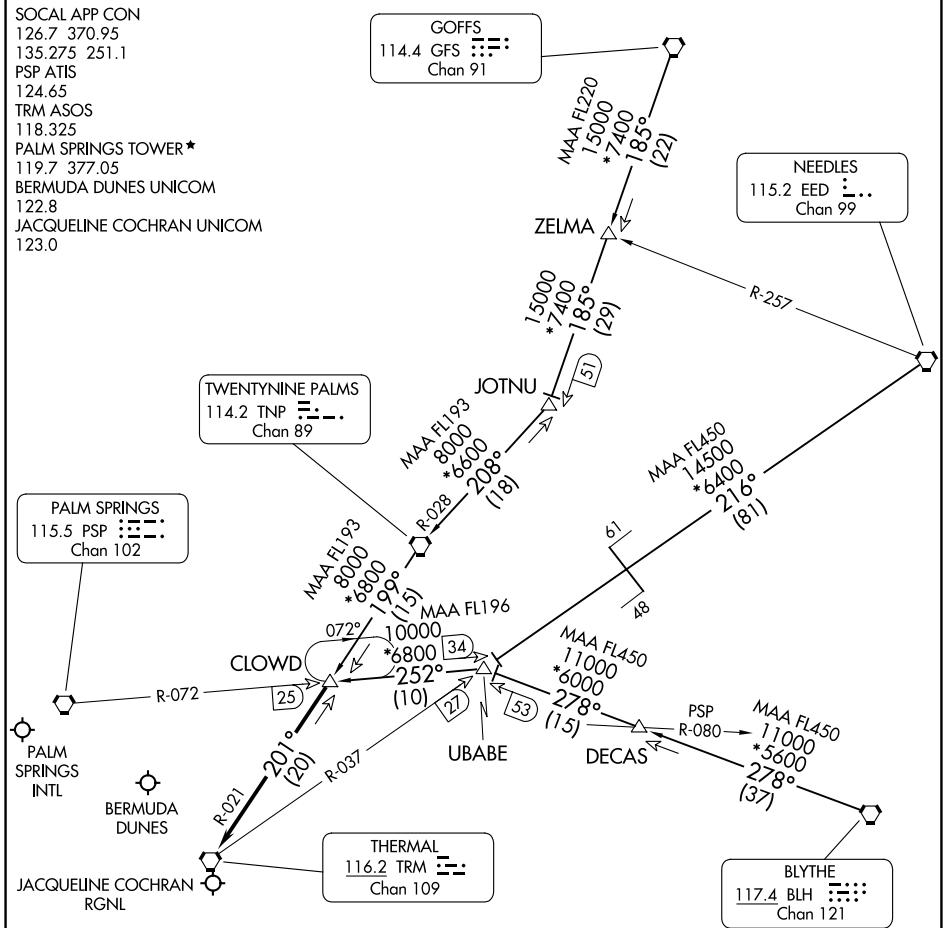
NEEDLES
 115.2 EED
 Chan 99

TWENTYNINE PALMS
 114.2 TNP
 Chan 89

PALM SPRINGS
 115.5 PSP
 Chan 102

THERMAL
 116.2 TRM
 Chan 109

BLYTHE
 117.4 BLH
 Chan 121



SW-3, 31 OCT 2024 to 28 NOV 2024

SW-3, 31 OCT 2024 to 28 NOV 2024

NOTE: Chart not to scale.

NOTE: DME required.

ARRIVAL ROUTE DESCRIPTION

BLYTHE TRANSITION (BLH.CLOUD1): From over BLH VORTAC on BLH R-278 and PSP R-072 to CLOUD DME. Thence. . .

DECAS TRANSITION (DECAS.CLOUD1): From over DECAS INT on BLH R-278 and PSP R-072 to CLOUD DME. Thence. . .

GOFFS TRANSITION (GFS.CLOUD1): From over GFS VORTAC on GFS R-185 and TNP R-028 to TNP VORTAC, then on TNP R-199 to CLOUD DME. Thence. . .

NEEDLES TRANSITION (EED.CLOUD1): From over EED VORTAC on EED R-216 and TRM R-037 to UBABE DME, then on PSP R-072 to CLOUD DME. Thence. . .

. . . From over CLOUD DME on TRM R-021 to TRM VORTAC. Expect RADAR vectors to final approach course.

CLOUD ONE ARRIVAL