

VORTAC SAF 110.6 Chan 43	APP CRS 332°	Rwy Idg TDZE Apt Elev 6316 6305 6349
---------------------------------------	------------------------	--

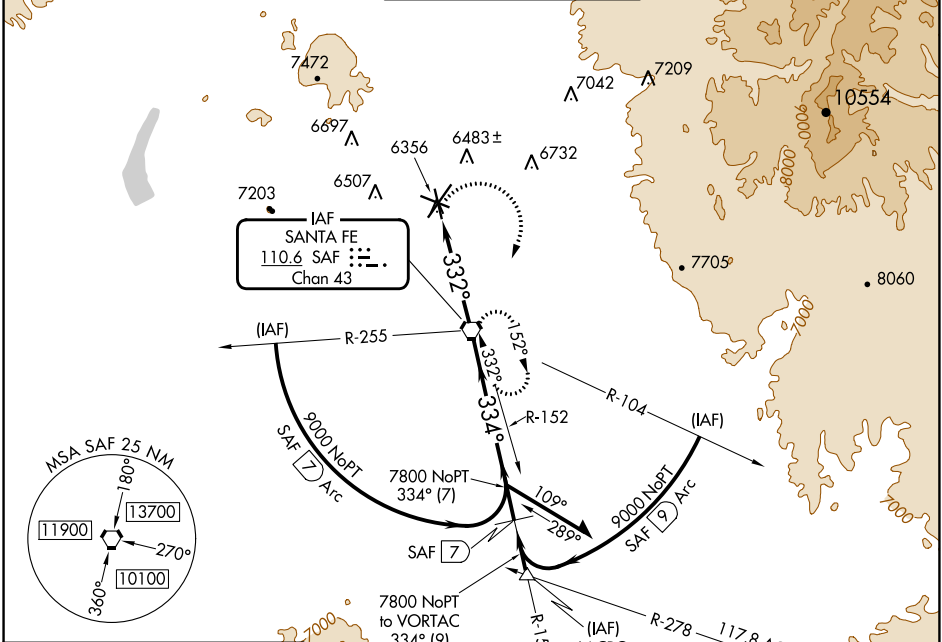
VOR RWY 33

SANTA FE RGNL (SAF)

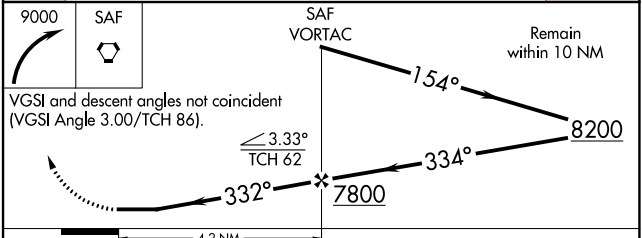
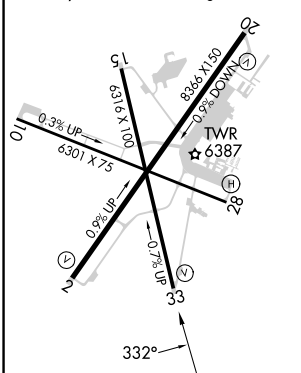
⚠ When Control Tower closed, obtain local altimeter setting on unicom; when not received, use Los Alamos altimeter setting: increase all MDAs 160 feet and S-33 visibility Cat C/D ½ SM.

MISSED APPROACH: Climbing right turn to 9000 direct SAF VORTAC and hold, continue climb-in-hold to 9000.

ATIS 128.55	ALBUQUERQUE CENTER 132.8 346.35	SANTA FE TOWER★ 119.5 (CTAF) 239.3	GND CON 121.7	UNICOM 122.95
-----------------------	---	--	-------------------------	-------------------------



ELEV 6349	D	TDZE 6305
REIL Rwy 10, 15, 20 and 33		
MIRL Rwy 2-20 and 15-33		



CATEGORY	A	B	C	D
S-33	6720-1	415 (400-1)	6720-1¼	415 (400-1¼)
CIRCLING	6840-1 491 (500-1)	6920-1 571 (600-1)	7340-3 991 (1000-3)	7660-3 1311 (1400-3)

SW-1, 31 OCT 2024 to 28 NOV 2024

SW-1, 31 OCT 2024 to 28 NOV 2024