

CENTEX SEVEN DEPARTURE

AL-556 (FAA)

AUSTIN-BERGSTROM INTL (AUS)

AUSTIN, TEXAS

D-ATIS
 124.4
 CLNC DEL
 125.5 263.0
 CPDLC
 GND CON
 121.9 348.6
 AUSTIN TOWER
 121.0 281.5
 AUSTIN DEP CON
 127.225 317.65

**TOP ALTITUDE:
 ASSIGNED BY ATC**

CEDAR CREEK
 114.8 CQY
 Chan 95

WACO
 115.3 ACT
 Chan 100

LEONA
 110.8 LOA
 Chan 45

COLLEGE STATION
 113.3 CLL
 Chan 80

GOOCH SPRINGS
 112.5 AGJ
 Chan 72

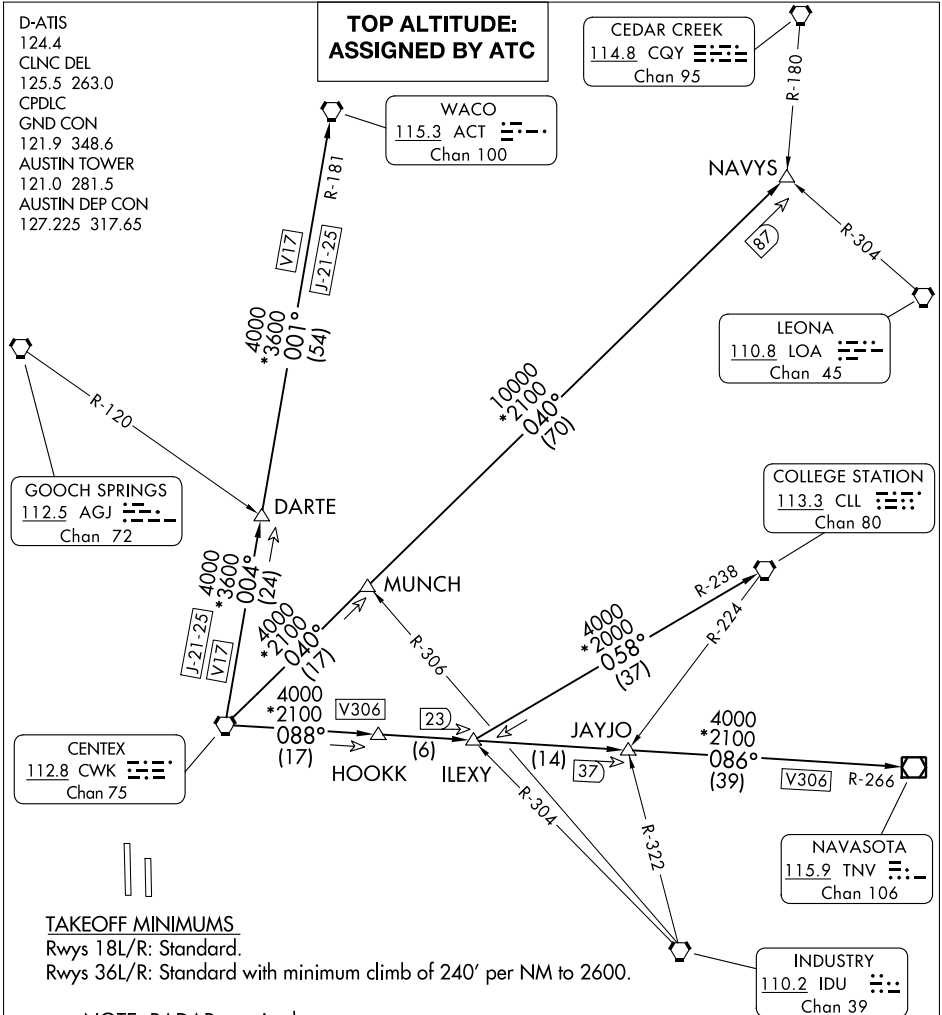
CENTEX
 112.8 CWK
 Chan 75

NAVASOTA
 115.9 TNV
 Chan 106

INDUSTRY
 110.2 IDU
 Chan 39

SC-3, 31 OCT 2024 to 28 NOV 2024

SC-3, 31 OCT 2024 to 28 NOV 2024



TAKEOFF MINIMUMS

Rwys 18L/R: Standard.

Rwys 36L/R: Standard with minimum climb of 240' per NM to 2600.

NOTE: RADAR required.

NOTE: COLLEGE STATION transition for aircraft requesting 9000 MSL to FL230.

NOTE: ILEXY transition for turboprop and turbojet aircraft landing HOU;

for turbojet aircraft landing EFD, GLS, or LXB; for all aircraft landing IAH.

NOTE: JAYJO transition for piston aircraft landing HOU; for piston and turboprop

aircraft landing EFD, GLS or LXB; for all aircraft landing other west/south

Houston terminal area airports.

NOTE: NAVYS transition for aircraft destined to the Dallas/Fort Worth terminal

area requesting FL230 and below. Do not file this transition if these conditions

are not met.

NOTE: WACO transition for aircraft requesting 12000' MSL and below.

(CONTINUED ON FOLLOWING PAGE)

NOTE: Chart not to scale.

CENTEX SEVEN DEPARTURE

AUSTIN, TEXAS

AUSTIN-BERGSTROM INTL (AUS)



DEPARTURE ROUTE DESCRIPTION

TAKEOFF RUNWAYS 18L/R, 36L/R: Climb on assigned heading for vectors, then on assigned transition. Maintain altitude assigned by ATC, expect filed altitude 10 minutes after departure.

COLLEGE STATION TRANSITION (CWK7.CLL): From over CWK VORTAC on CWK R-088 to ILEXY INT, then on CLL R-238 to CLL VORTAC.

ILEXY TRANSITION (CWK7.ILEXY): From over CWK VORTAC on CWK R-088 to ILEXY INT.

JAYJO TRANSITION (CWK7.JAYJO): From over CWK VORTAC on CWK R-088 to JAYJO INT.

NAVASOTA TRANSITION (CWK7.TNV): From over CWK VORTAC on CWK R-088 and TNV R-266 to TNV VOR/DME.

NAVYS TRANSITION (CWK7.NAVYS): From over CWK VORTAC on CWK R-040 to NAVYS INT.

WACO TRANSITION (CWK7.ACT): From over CWK VORTAC on CWK R-004 and ACT R-181 to ACT VORTAC.

SC-3, 31 OCT 2024 to 28 NOV 2024

SC-3, 31 OCT 2024 to 28 NOV 2024