

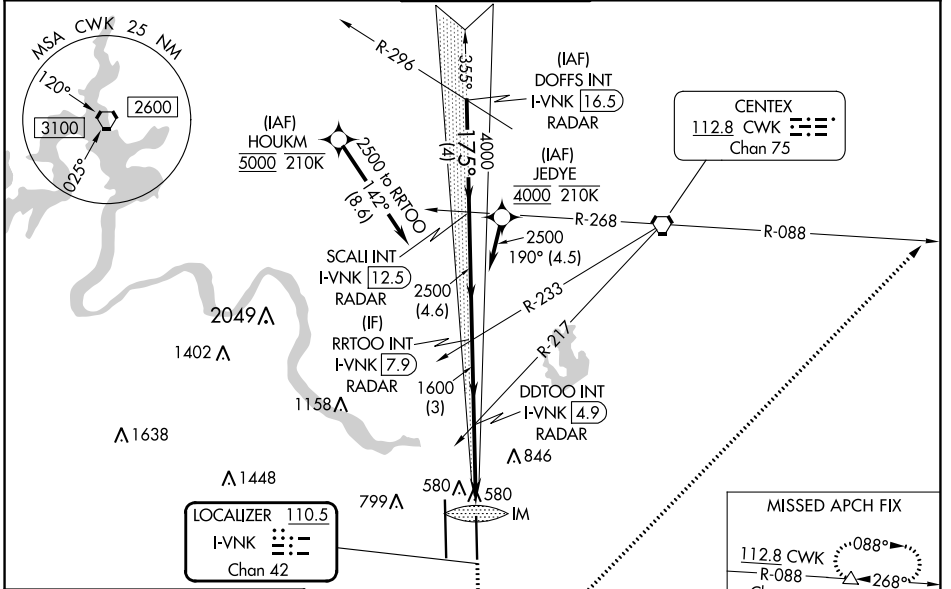
LOC/DME I-VNK <b>110.5</b> Chan 42	APP CRS <b>175°</b>	Rwy Idg TDZE Apt Elev <b>9000</b> <b>492</b> <b>542</b>
--	------------------------	--

# ILS RWY 18L (CAT II & III)

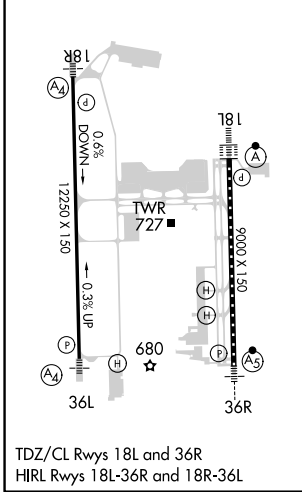
AUSTIN-BERGSTROM INTL (AUS)

RNP APCH-GPS. From HOUKM or JEDYE.		ALSF-2 	MISSED APPROACH: Climb to 1000 then climbing left turn to 3000 on heading 040° and CWK VORTAC R-088 to HOOKK/CWK 17 DME and hold.
RADAR required for procedure entry from DOFFS. DME required.			
Simultaneous approach authorized.			

D-ATIS <b>124.4</b>	AUSTIN APP CON <b>127.225 317.65</b> (EAST) <b>120.875 270.25</b> (SOUTH) <b>119.0 370.85</b> (WEST)	AUSTIN TOWER <b>121.0 281.5</b>	GND CON <b>121.9 348.6</b>	CLNC DEL <b>125.5 263.0</b>	CPDLC
------------------------	---	------------------------------------	-------------------------------	--------------------------------	-------



ELEV 542	<b>D</b> TDZE 492
----------	-------------------



VGS and ILS glidepath not coincident (VGS Angle 3.00/TCH 74).		1000	3000	HOOKK
DOFFS INT I-VNK 16.5 (RADAR)	SCALI INT I-VNK 12.5 (RADAR)	RRTOO INT I-VNK 7.9 (RADAR)	DDTOO INT I-VNK 4.9 (RADAR)	IM
5000	4000	2500	1600	592
GS 3.00° TCH 61	4 NM	4.6 NM	3 NM	3.3 NM
CATEGORY	A	B	C	D
S-ILS 18L	CAT II RA 105/12 100 DA 592			
S-ILS 18L	CAT III RVR 06			

## CATEGORY II & III ILS - SPECIAL AIRCREW & AIRCRAFT CERTIFICATION REQUIRED

SC-3, 31 OCT 2024 to 28 NOV 2024

SC-3, 31 OCT 2024 to 28 NOV 2024