

RNAV 1 - DME/DME/IRU or GPS.

RADAR required.

AUSTIN APP CON
127.225 317.65
D-ATIS
124.4

NOTE: Turbojet and turboprop aircraft only.
NOTE: MNURE Transition for Houston terminal departures only.
NOTE: Expect runway assignment from AUSTIN TRACON upon initial contact.

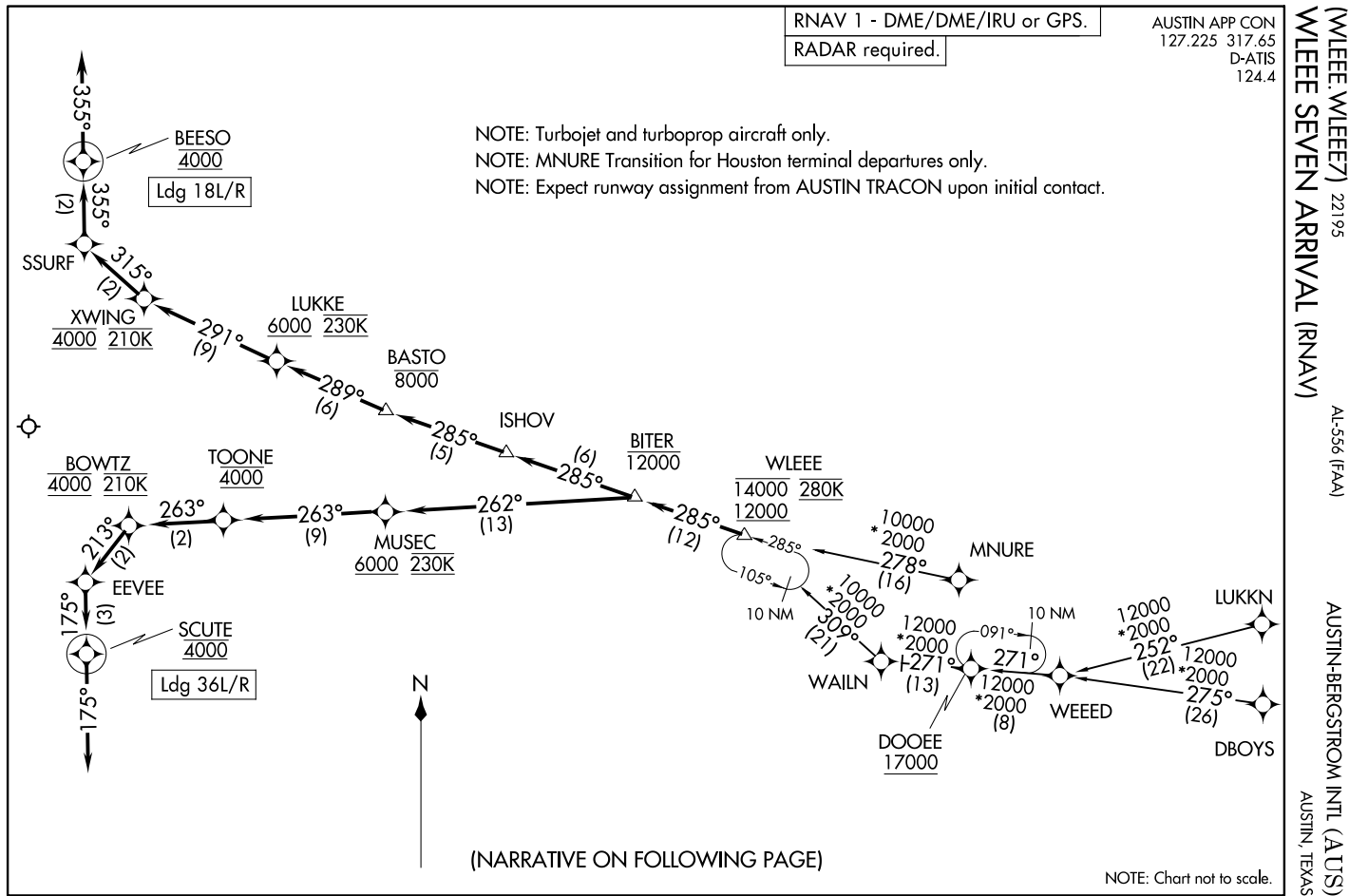
WLEEE SEVEN ARRIVAL (RNAV)
(WLEEE, WLEEE7) 14JUL22

AUSTIN-BERGSTROM INTL (AUS)
AUSTIN, TEXAS

(WLEEE, WLEEE7) 22195
WLEEE SEVEN ARRIVAL (RNAV)

AL-556 (FAA)

AUSTIN-BERGSTROM INTL (AUS)
AUSTIN, TEXAS



(NARRATIVE ON FOLLOWING PAGE)

ARRIVAL ROUTE DESCRIPTION

DBOYS TRANSITION (DBOYS.WLEEE7)

LUKKN TRANSITION (LUKKN.WLEEE7)

MNURE TRANSITION (MNURE.WLEEE7)

WAILN TRANSITION (WAILN.WLEEE7)

WEEED TRANSITION (WEEED.WLEEE7)

From WLEEE on track 285° to cross BITER at or below 12000.

LANDING RUNWAYS 18L/R: From BITER on track 285° to ISHOV, then on track 285° to cross BASTO at or below 8000, then on track 289° to cross LUKKE at or above 6000 and at 230K, then on track 291° to cross XWING at 4000 and at 210K, then on track 315° to SSURF, then on track 355° to cross BEESO at 4000, then on track 355°. Expect RADAR vectors to final approach course.

LANDING RUNWAYS 36L/R: From BITER on track 262° to cross MUSEC at or above 6000 and at 230K, then on track 263° to cross TOONE at 4000, then on track 263° to cross BOWTZ at 4000 and at 210K, then on track 213° to EEVEE, then on track 175° to cross SCUTE at 4000, then on track 175°. Expect RADAR vectors to final approach course.

SC-3, 31 OCT 2024 to 28 NOV 2024

SC-3, 31 OCT 2024 to 28 NOV 2024