

CAMP SPRINGS ONE DEPARTURE (CAMP1•ADW)

CAMP SPRINGS, MARYLAND

ATIS 133.675 251.05

SL-561 [USAF]

Rwy	Knots	60	120	180	240	300	360
1L/R	V/V(fpm)	380	760	1140	1520	1900	2280

CPDLC

GND CON

121.8 275.8

ANDREWS TOWER

118.4 349.0

POTOMAC TRACON DEP CON

118.95 257.2

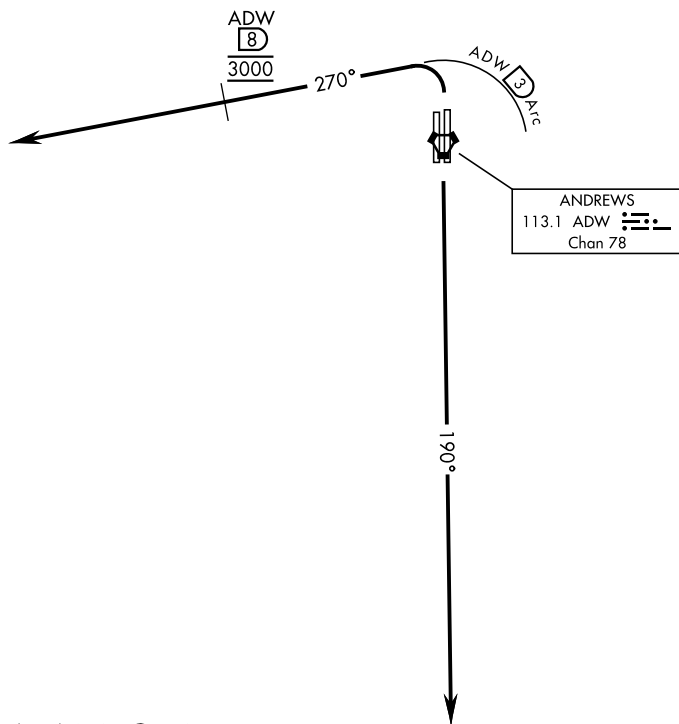
ATC Climb Rate to 3000

If unable to make published climb gradient
advise ATC prior to departure.

1149

▲

RADAR VECTORS REQUIRED WITHIN 10 NM FROM DEPARTURE



RADAR REQUIRED



DEPARTURE ROUTE DESCRIPTION

TAKE-OFF RWY 1L/1R: Turn left climb on heading 270° within 3 DME of ADW VORTAC, cross ADW 8 DME at 3000. Expect radar vectors.

TAKE-OFF RWY 19R/19L: Climb on heading 190° to 3000. Expect radar vectors to the west.

CAMP SPRINGS ONE DEPARTURE (CAMP1•ADW)

CAMP SPRINGS, MARYLAND
JOINT BASE ANDREWS (KADW)