

CAMP SPRINGS, MARYLAND

# ILS or LOC RWY 19L

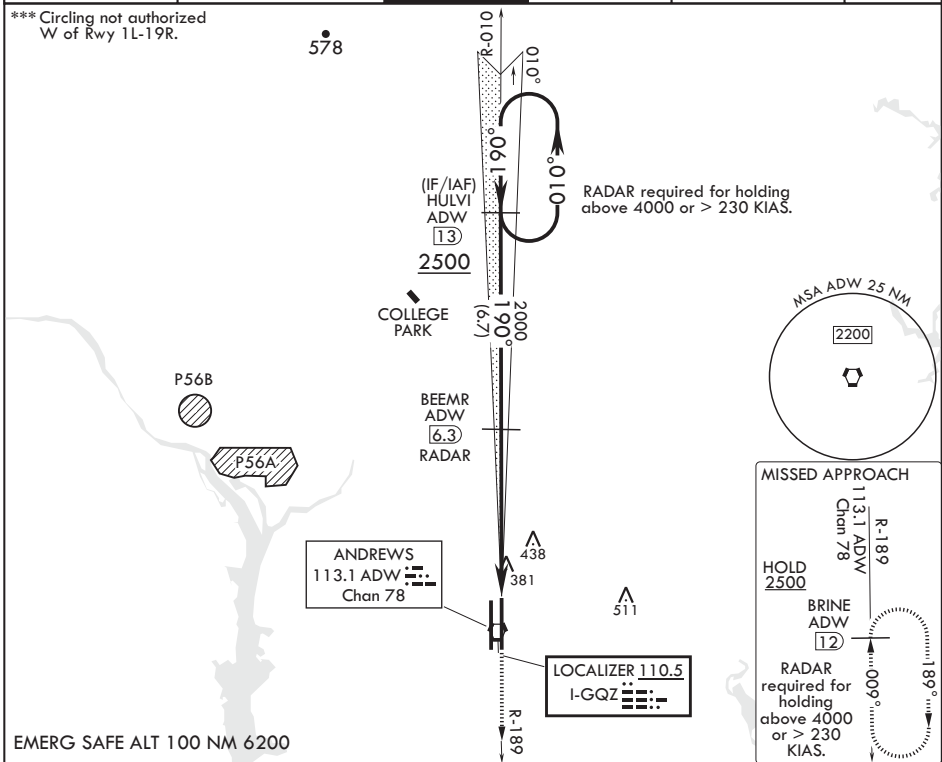
LOC I-GQZ <b>110.5</b>	APCH CRS <b>190°</b>	Rwy ldg TDZE Arprt Elev <b>9756</b> <b>279</b> <b>280</b>
---------------------------	-------------------------	---

AL-561 (USAF)

JOINT BASE ANDREWS (KADW)

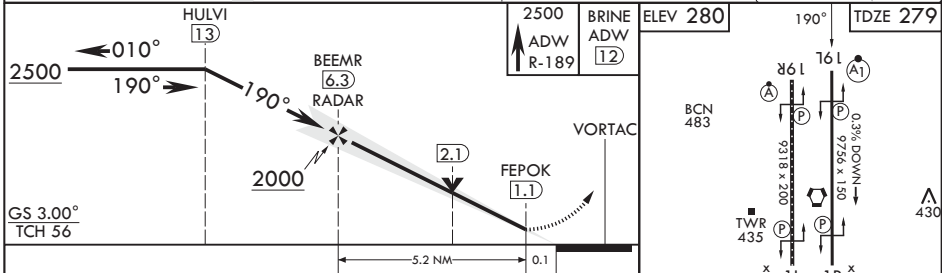
RADAR or DME required at FAF.		ALS-F1	MISSED APPROACH: Climb to 2500 via ADW R-189 to BRINE/ADW 12 DME and hold.		
* When ALS inop, increase RVR to 40, vis to 3/4. ** When ALS inop, increase CAT AB RVR to 55, vis to 1 mile; CAT CDE RVR to 60, vis to 1 1/8 mile.		(A1)			

ATIS <b>133.675 251.05</b>	POTOMAC APP CON <b>128.0 335.5</b>	TOWER <b>118.4 349.0</b>	GND CON <b>121.8 275.8</b>	CLNC DEL <b>127.55 285.475</b>	CPDLC
-------------------------------	---------------------------------------	-----------------------------	-------------------------------	-----------------------------------	-------



NE-3, 31 OCT 2024 to 28 NOV 2024

NE-3, 31 OCT 2024 to 28 NOV 2024



EMERG SAFE ALT 100 NM 6200	2500 ADW R-189	BRINE ADW 12	ELEV 280	190° TDZE 279	
GS 3.00° TCH 56					
CATEGORY	A	B	C	D	E
S-ILS 19L*	479/24		200	(200-½)	
S-LOC 19L**	680/24	401 (400-½)	680/40	401	(400-¾)
CIRCLING***	780-1	500 (500-1)	780-1½	840-2	560 (600-2)
HIRL all Rwys TDZL/CL Rwys 1L, 19R					
FAF to MAP 5.2 NM					
Knots	60	90	120	150	180
Min:Sec	5:12	3:28	2:36	2:05	1:44

CAMP SPRINGS, MARYLAND

38°49'N - 76°52'W

JOINT BASE ANDREWS (KADW)

Amdt 1 18MAY23

# ILS or LOC RWY 19L