

CAMP SPRINGS, MARYLAND

# ILS or LOC RWY 19R

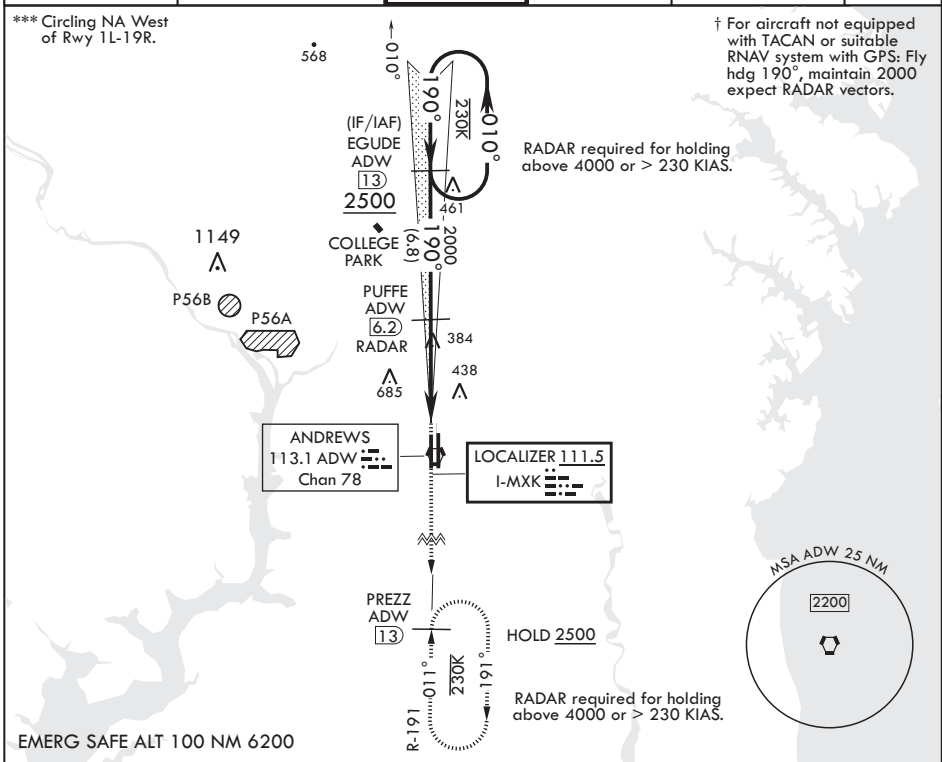
LOC I-MXK <b>111.5</b>	APCH CRS <b>190°</b>	Rwy Idg TDZE Arprt Elev	<b>9318</b> <b>274</b> <b>280</b>
---------------------------	-------------------------	-------------------------------	---

AL-561 (USAF)

JOINT BASE ANDREWS (KADW)

RADAR or DME required.	ALS-F-2	† MISSED APPROACH: Climb to 2500, intercept ADW VORTAC R-191 to PREZZ and hold.
▼ * When ALS inop, increase RVR to 40, vis to 3/4 mile. When TDZL/CL inop, increase RVR to 24. ** When ALS inop, increase CAT AB RVR to 55, vis to 1 mile, CAT CDE RVR to 60, vis to 1 1/8 miles.	Ⓐ	

ATIS <b>133.675 251.05</b>	POTOMAC APP CON <b>128.0 335.5</b>	TOWER <b>118.4 349.0</b>	GND CON <b>121.8 275.8</b>	CLNC DEL <b>127.55 285.475</b>	CPDLC
-------------------------------	---------------------------------------	-----------------------------	-------------------------------	-----------------------------------	-------



NE-3, 31 OCT 2024 to 28 NOV 2024

NE-3, 31 OCT 2024 to 28 NOV 2024

		ELEV 280	TDZE 274
<p>VGSi and ILS glidepath not coincident (VGSi Angle 3.00/TCH 71).</p> <p>GS 3.00° TCH 55</p>		<p>2500 ADW R-191</p> <p>PREZZ ADW 13</p>	<p>BCN 483</p> <p>TWR 435</p> <p>1L 1R</p> <p>430</p>
CATEGORY	A B C D E		
S-ILS 19R*	474/18 200 (200-½)		
S-LOC 19R**	660/24 386 (400-½) 660/35 386 (400-¾)		
☐ CIRCLING***	780-1 500 (500-1) 780-1½ 500 (500-1½) 840-2 560 (600-2)		
HIRL all Rwys TDZL/CL Rwys 1L, 19R			
FAF to MAP 4.7 NM			
Knots 60 90 120 150 180			
Min:Sec 4:42 3:08 2:21 1:53 1:34			

CAMP SPRINGS, MARYLAND

38°49'N - 76°52'W

JOINT BASE ANDREWS (KADW)

Amdt 4 06OCT22

# ILS or LOC RWY 19R