

24305

JEFNSN TWO DEPARTURE (RNAV) (JEFNSN2.JEFNSN)

JOINT BASE ANDREWS (KADW)

CAMP SPRINGS, MARYLAND

ATIS 133.675 251.05

CPDLC

GND CON

121.8 275.8

ANDREWS TOWER

118.4 349.0

POTOMAC DEP CON

118.95 254.35

RNAV1-GPS

[USAF]

RADAR required

(Page 1 of 2)

TOP ALTITUDE:

3000

Max 250 KIAS until JEFNSN

Prohibited (P56) 1.5NM north of DCA avoid surface to FL800.



P568



RONALD REAGAN WASHINGTON INTL

FLMOR 3000

POLKK

230°
(8.4)

LINCN

• 541

313°
(9.2)

FLMOR 3000

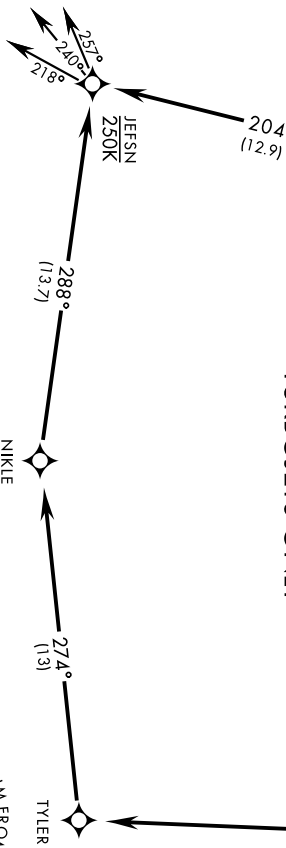
FLMOR 3000

271°
(111)

800

010°
(2.6)

TURBOJET'S ONLY



(TRANSITIONS CONTINUED ON THE FOLLOWING PAGE)

DEPARTURE ROUTE DESCRIPTION

▶ TAKEOFF RWY 1L/R: Climb on heading 010° to 800, then climbing left turn to 3000 direct FLMOR. Then via depicted route to JEFNSN, hence...

TAKEOFF RWY 19L/R: Climb direct TYLER then via depicted route to JEFNSN, hence...

... on assigned transition. Maintain 3000, expect further clearance to filed alt within ten (10) minutes after departure.

- FLASK TRANSITION (JEFNSN2.FLASK)
- GLANC TRANSITION (JEFNSN2.GLANC)
- MAULS TRANSITION (JEFNSN2.MAULS)
- MELTN TRANSITION (JEFNSN2.MELTN)
- RRSIN TRANSITION (JEFNSN2.RRSIN)

JEFNSN TWO DEPARTURE (RNAV) (JEFNSN2.JEFNSN)

Orig 31 OCT24

CAMP SPRINGS, MARYLAND
JOINT BASE ANDREWS (KADW)

TOP ALTITUDE:

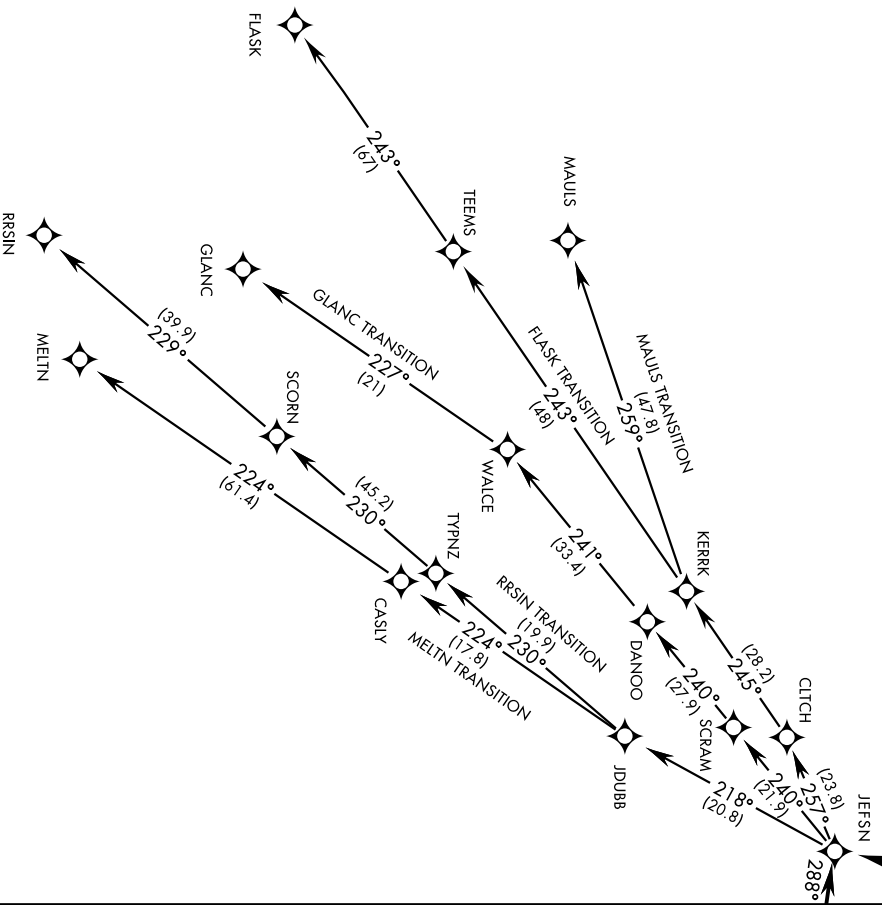
RNAV1-GPS

[USAF]

3000

RADAR required

(Page 2 of 2)



TURBOJET ONLY

NOTE: Chart not to scale

JEFNSN TWO DEPARTURE (RNAV) (JEFNSN2.JEFNSN)

Orig 31OCT24

CAMP SPRINGS, MARYLAND
JOINT BASE ANDREWS (KADW)