

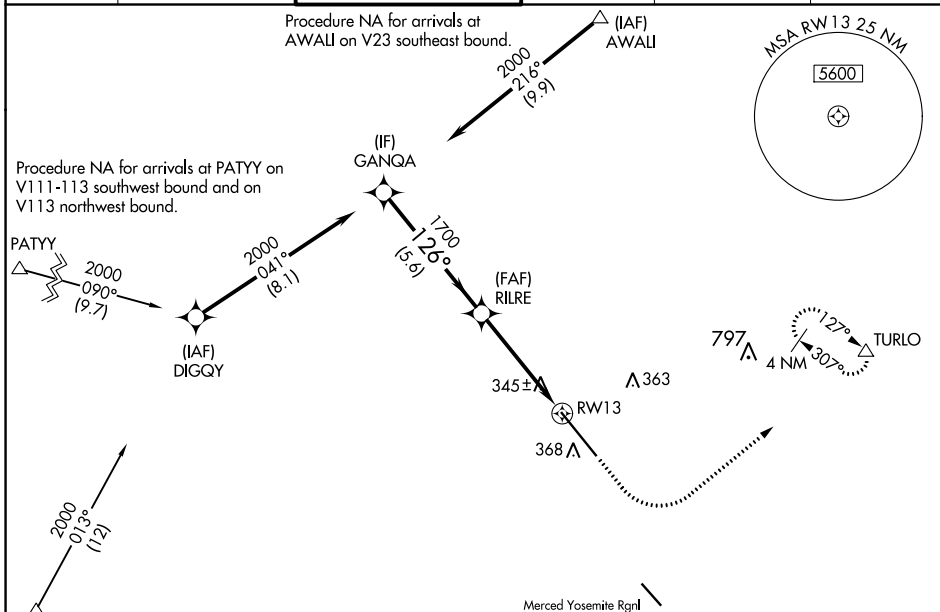
WAAS CH <b>50211</b> <b>W13A</b>	APP CRS <b>126°</b>	Rwy Idg <b>11802</b> TDZE <b>190</b> Apt Elev <b>190</b>
--	------------------------	--

# RNAV (GPS) RWY 13

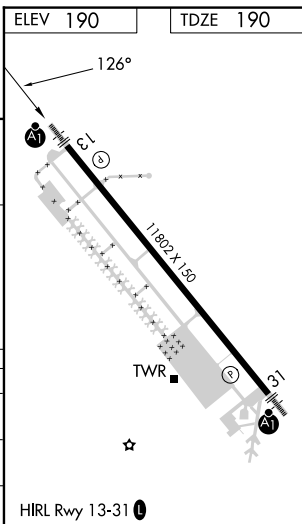
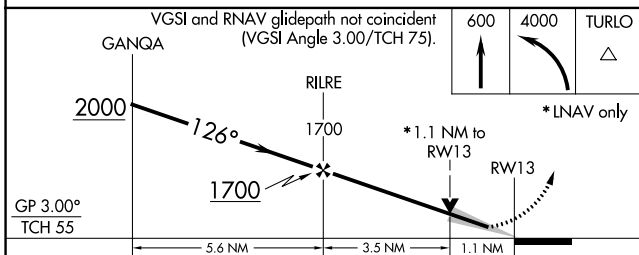
CASTLE (MER)

RNP APCH.	ALSF-1 	MISSED APPROACH: Climb to 600 then climbing left turn to 4000 direct TURLO and hold, continue climb-in-hold to 4000.
<p>▼ For uncompensated Baro-VNAV systems, LNAV/VNAV NA below -1.5°C or above 54°C. For inoperative ALS, increase LNAV/VNAV all Cats visibility to 1½ SM, increase LNAV Cats A/B visibility to 1 SM, and increase LNAV Cat C/D visibility to 1½ SM.</p>		

ATIS <b>124,475</b>	NORCAL APP CON <b>120,95 269,45</b>	CASTLE TOWER ★ <b>118,175 (CTAF) 235,775</b>	GND CON <b>133,575</b>	UNICOM <b>122,95</b>	<b>123.0</b>
------------------------	--	---	---------------------------	-------------------------	--------------



ELEV 190	TDZE 190
----------	----------



CATEGORY	A	B	C	D
LPV DA		390-¾	200 (200-¾)	
LNAV/VNAV DA		655-1	465 (500-1)	
LNAV MDA		600-¾	410 (500-¾)	

SW-2, 31 OCT 2024 to 28 NOV 2024

SW-2, 31 OCT 2024 to 28 NOV 2024