

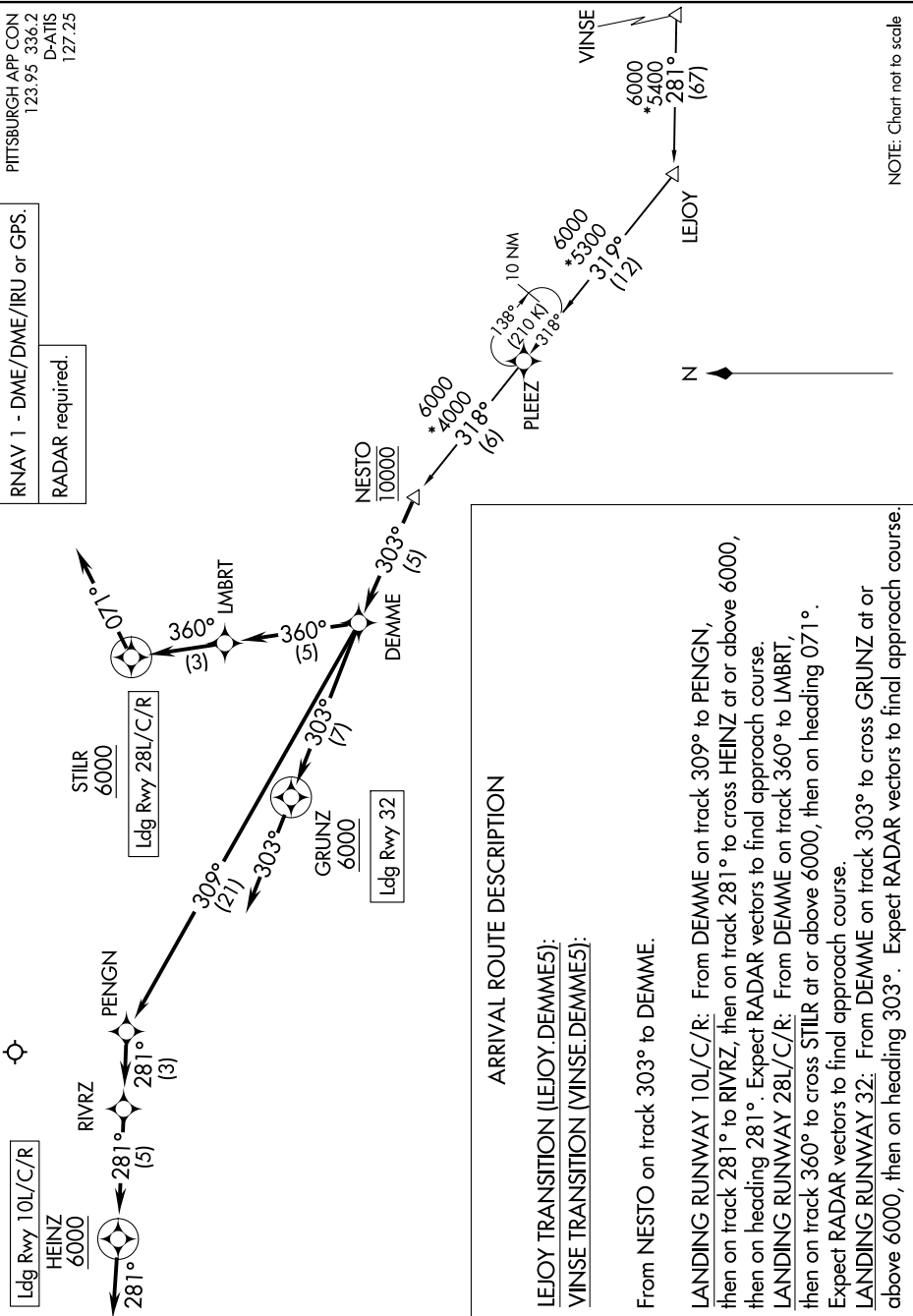
DEMME FIVE ARRIVAL (RNAV)

PITTSBURGH INTL (PIT)
PITTSBURGH, PENNSYLVANIA

NE-4, 31 OCT 2024 to 28 NOV 2024

PITTSBURGH APP CON
123.95 336.2
D-ATIS
127.25

RNAV 1 - DME/DME/IRU or GPS.
RADAR required.



NOTE: Chart not to scale

ARRIVAL ROUTE DESCRIPTION

LEJOY TRANSITION (LEJOY.DEMME5):

VINSE TRANSITION (VINSE.DEMME5):

From NESTO on track 303° to DEMME.

LANDING RUNWAY 10L/C/R: From DEMME on track 309° to PENG, then on track 281° to RIVRZ, then on track 281° to cross HEINZ at or above 6000, then on heading 281°. Expect RADAR vectors to final approach course.
LANDING RUNWAY 28L/C/R: From DEMME on track 360° to LMBRT, then on track 360° to cross STILR at or above 6000, then on heading 071°. Expect RADAR vectors to final approach course.
LANDING RUNWAY 32: From DEMME on track 303° to cross GRUNZ at or above 6000, then on heading 303°. Expect RADAR vectors to final approach course.

NE-4, 31 OCT 2024 to 28 NOV 2024

DEMME FIVE ARRIVAL (RNAV)