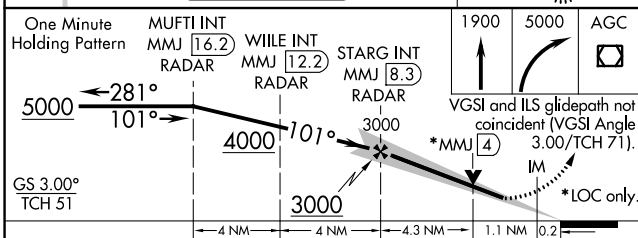
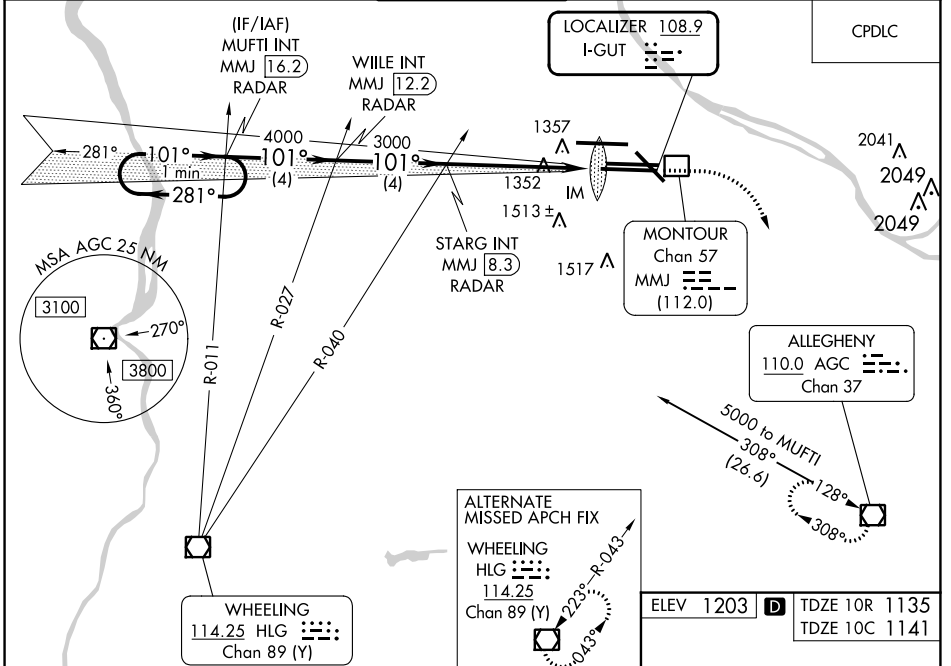


LOC I-GUT	APP CRS	Rwy Idg	10R	10C
<b>108.9</b>	<b>101°</b>	TDZE	<b>11492</b>	<b>9708</b>
		Apt Elev	<b>1135</b>	<b>1141</b>
			<b>1203</b>	<b>1203</b>

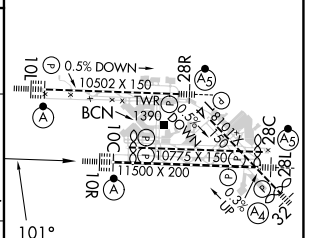
# ILS or LOC RWY 10R

PITTSBURGH INTL (PIT)

	ALSIF-2	MISSED APPROACH: Climb to 1900 then climbing right turn to 5000 direct AGC VOR/DME and hold, continue climb-in-hold to 5000.														
	<table border="1"> <tr> <td>D-ATIS</td> <td>PITTSBURGH APP CON</td> <td>PITTSBURGH TOWER</td> <td>GND CON</td> <td>CLNC DEL</td> </tr> <tr> <td>ARR <b>127.25</b></td> <td><b>123.95 360.8</b></td> <td><b>128.3 291.7</b></td> <td>SOUTH <b>121.9 348.6</b></td> <td><b>126.75 353.7</b></td> </tr> <tr> <td>DEP <b>135.9</b></td> <td></td> <td></td> <td>NORTH <b>127.8 348.6</b></td> <td></td> </tr> </table>	D-ATIS	PITTSBURGH APP CON	PITTSBURGH TOWER	GND CON	CLNC DEL	ARR <b>127.25</b>	<b>123.95 360.8</b>	<b>128.3 291.7</b>	SOUTH <b>121.9 348.6</b>	<b>126.75 353.7</b>	DEP <b>135.9</b>			NORTH <b>127.8 348.6</b>	
D-ATIS	PITTSBURGH APP CON	PITTSBURGH TOWER	GND CON	CLNC DEL												
ARR <b>127.25</b>	<b>123.95 360.8</b>	<b>128.3 291.7</b>	SOUTH <b>121.9 348.6</b>	<b>126.75 353.7</b>												
DEP <b>135.9</b>			NORTH <b>127.8 348.6</b>													



ELEV 1203	TDZE 10R 1135
	TDZE 10C 1141



CATEGORY	A	B	C	D	E
S-ILS 10R	1335/18 200 (200-1/2)			1335/24 200 (200-1/2)	
S-LOC 10R	1620/24 485 (500-1/2)		1620/50 1620/60 485 (500-1) 485 (500-1/4)		
SIDESTEP 10C	1620/50	479 (500-1)	1620-1 1/2 479 (500-1/2)	1620-2 479 (500-2)	1620-2 1/4 479 (500-2 1/4)
CIRCLING	1700-1	497 (500-1)	1880-2 677 (700-2)	1880-2 1/4 677 (700-2 1/4)	1880-2 1/2 677 (700-2 1/2)

REIL Rwy 10C					
HIRL all Rwys					
TDZ/CL Rwys 10L, 10R, 28L, 28R, 28C, and 32					
FAF to MAP 5.6 NM					
Knots	60	90	120	150	180
Min:Sec	5:36	3:44	2:48	2:14	1:52

NE-4, 31 OCT 2024 to 28 NOV 2024

NE-4, 31 OCT 2024 to 28 NOV 2024