

LOC/DME I-TQW 111.3 Chan 50	APP CRS 325°	Rwy ldg 7466 TDZE 1124 Apt Elev 1203
---	------------------------	---

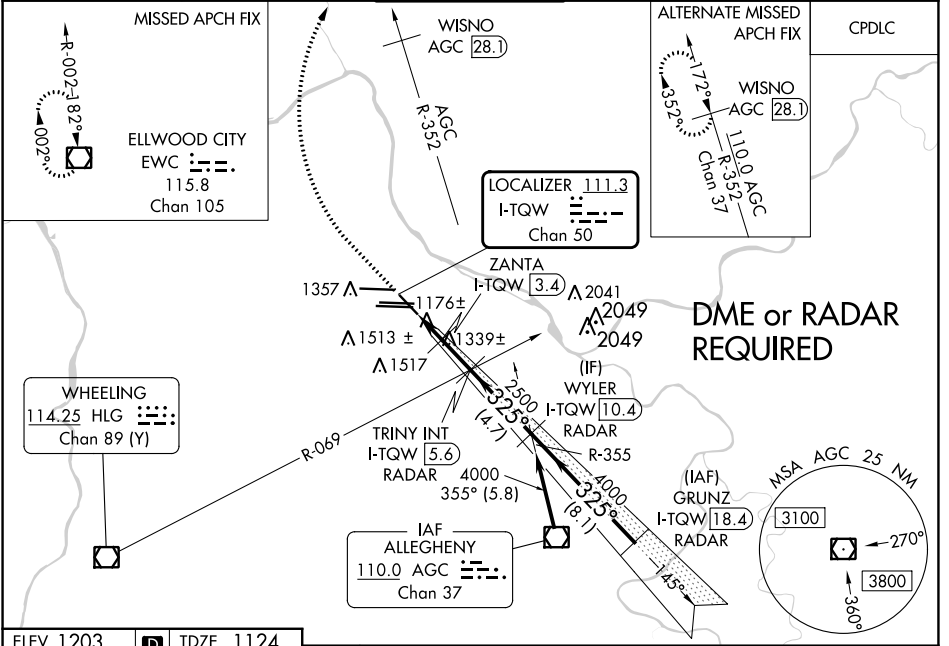
ILS or LOC RWY 32

PITTSBURGH INTL (PIT)

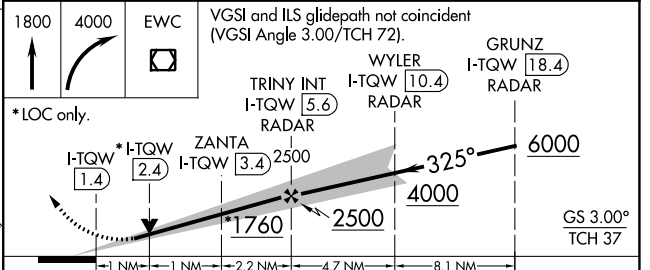
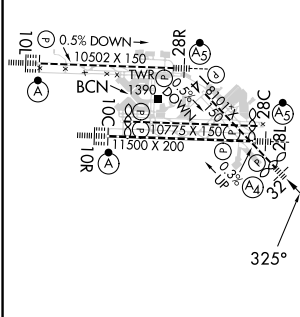
⚠ DME or RADAR required. Inop table does not apply to S-ILS 32. For inop ALS, increase S-LOC 32 Cat E visibility to 1 $\frac{3}{4}$ SM and ZANTA fix minimums S-LOC 32 Cat E visibility to RVR 6000.

MALS MISSED APPROACH: Climb to 1800 then climbing right turn to 4000 direct EWC VOR/DME and hold.

D-ATIS ARR 127.25 DEP 135.9	PITTSBURGH APP CON 123.95 360.8	PITTSBURGH TOWER 128.3 291.7	GND CON SOUTH 121.9 348.6 NORTH 127.8 348.6	CLNC DEL 126.75 353.7
---	---	--	---	---------------------------------



ELEV 1203	D	TDZE 1124
-----------	----------	-----------



CATEGORY	A	B	C	D	E
S-ILS 32	1324/40 200 (200- $\frac{3}{4}$)				
S-LOC 32	1760/40	636 (600- $\frac{3}{4}$)	1760-1 $\frac{1}{2}$	636 (600-1 $\frac{1}{2}$)	
C CIRCLING	1760-1	557 (600-1)	1880-2 677 (700-2)	1880-2 $\frac{1}{4}$ 677 (700-2 $\frac{1}{4}$)	1880-2 $\frac{1}{2}$ 677 (700-2 $\frac{1}{2}$)
ZANTA FIX MINIMUMS (DME REQUIRED)					
S-LOC 32	1520/40	396 (400- $\frac{3}{4}$)	1520/45	396 (400- $\frac{3}{8}$)	
C CIRCLING	1700-1	497 (500-1)	1880-2 677 (700-2)	1880-2 $\frac{1}{4}$ 677 (700-2 $\frac{1}{4}$)	1880-2 $\frac{1}{2}$ 677 (700-2 $\frac{1}{2}$)

NE-4, 31 OCT 2024 to 28 NOV 2024

NE-4, 31 OCT 2024 to 28 NOV 2024