

WAAS CH <b>90126</b> <b>W10A</b>	APP CRS <b>101°</b>	Rwy Idg TDZE Apt Elev	<b>9708</b> <b>1141</b> <b>1203</b>
--	------------------------	-----------------------------	---

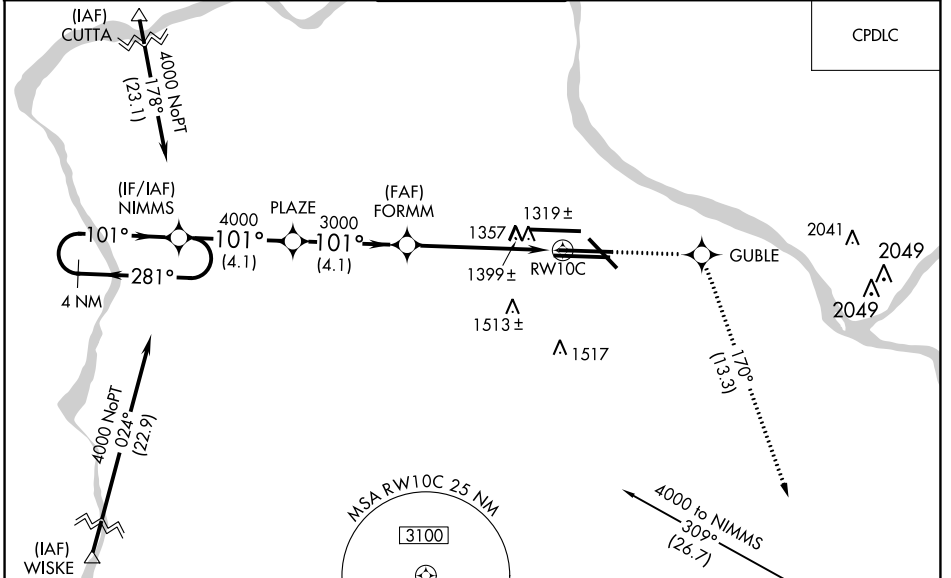
# RNAV (GPS) Y RWY 10C

PITTSBURGH INTL (PIT')

**⚠** For uncompensated Baro-VNAV systems, LNAV/VNAV NA below -17°C (2°F) or above 54°C (130°F). DME/DME RNP-0.3 NA. Simultaneous approach authorized with ILS or LOC Rwy 10L, ILS Rwy 10L (Cat II), ILS Rwy 10L (Cat III). LNAV procedure NA during simultaneous operations. Use of FD or AP providing RNAV track guidance required during simultaneous operations.

**MISSED APPROACH:**  
Climb to 4000 direct GUBLE and right turn on track 170° to AGC VOR/DME and hold.

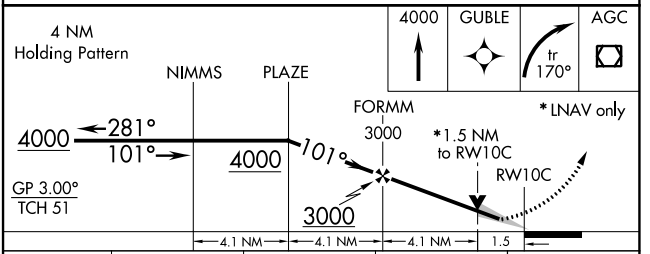
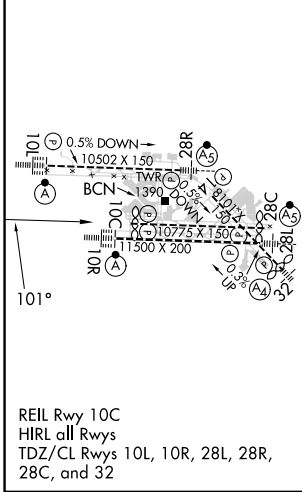
D-ATIS ARR <b>127.25</b> DEP <b>135.9</b>	PITTSBURGH APP CON <b>123.95 360.8</b>	<b>PITTSBURGH TOWER</b> <b>128.3 291.7</b>	GND CON SOUTH <b>121.9 348.6</b> NORTH <b>127.8 348.6</b>	CLNC DEL <b>126.75 353.7</b>
---	---	---	---	---------------------------------



NE-4, 31 OCT 2024 to 28 NOV 2024

NE-4, 31 OCT 2024 to 28 NOV 2024

ELEV 1203	<b>D</b>	TDZE 1141
-----------	----------	-----------



CATEGORY	A	B	C	D
LPV DA		1438/50	297 (300-1)	
LNAV/VNAV DA		1634-1 <sup>3</sup> / <sub>4</sub>	493 (500-1 <sup>3</sup> / <sub>4</sub> )	
LNAV MDA	1660/55	519 (500-1)	1660-1 <sup>1</sup> / <sub>2</sub> 519 (500-1 <sup>1</sup> / <sub>2</sub> )	1660-1 <sup>3</sup> / <sub>4</sub> 519 (500-1 <sup>3</sup> / <sub>4</sub> )
<b>C</b> CIRCLING	1700-1	497 (500-1)	1880-2 677 (700-2)	1880-2 <sup>1</sup> / <sub>4</sub> 677 (700-2 <sup>1</sup> / <sub>4</sub> )