

MINNIE FIVE ARRIVAL
(MINNIE, MINNIE5) 13JAN11

(MINNIE, MINNIE5) 24081
MINNIE FIVE ARRIVAL

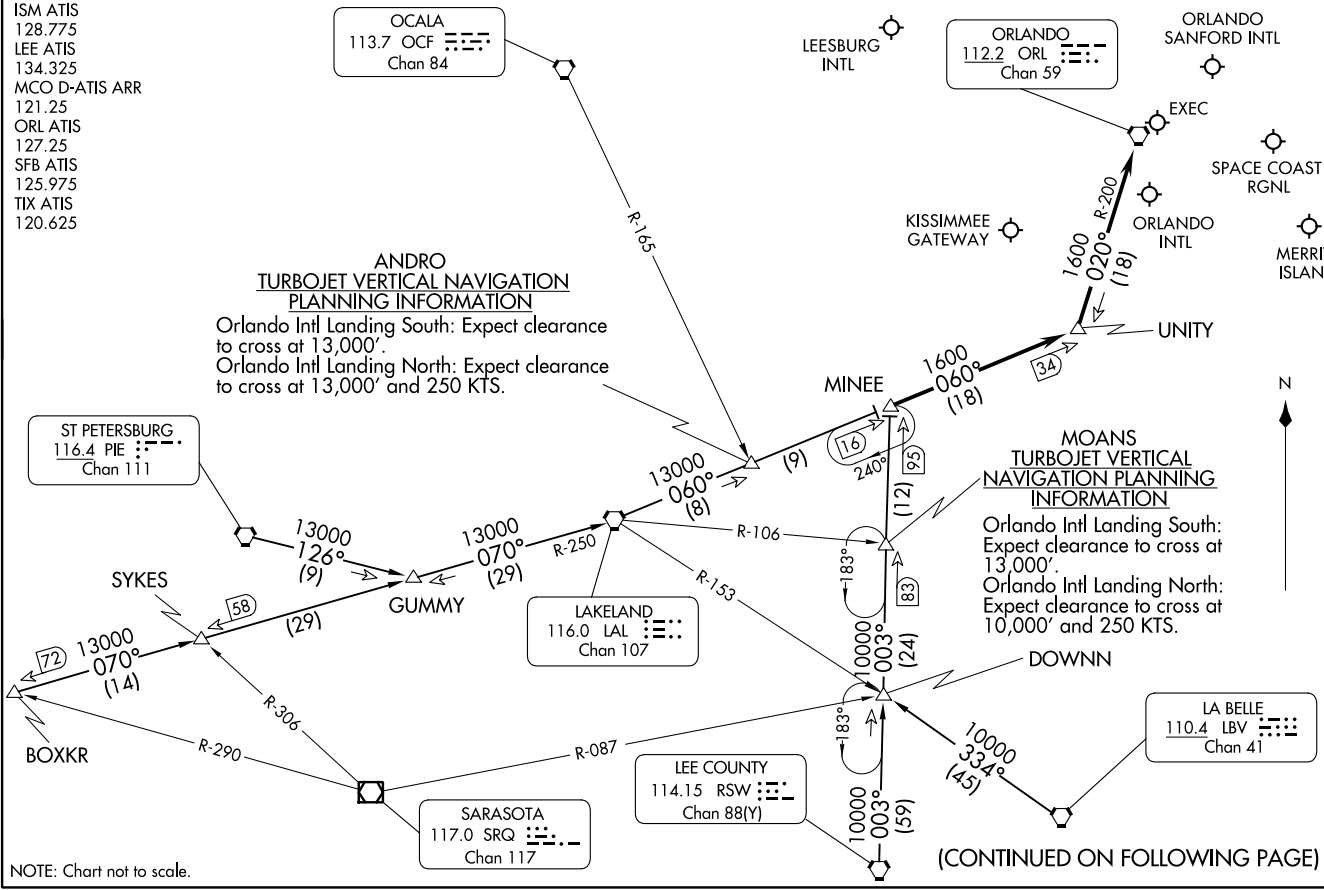
ORLANDO APP CON
134.05 339.8
ISM ATIS
128.775
LEE ATIS
134.325
MCO D-ATIS ARR
121.25
ORL ATIS
127.25
SFB ATIS
125.975
TIX ATIS
120.625

**ANDRO
TURBOJET VERTICAL
PLANNING INFORMATION**

Orlando Intl Landing South: Expect clearance to cross at 13,000'.
Orlando Intl Landing North: Expect clearance to cross at 13,000' and 250 KTS.

**MOANS
TURBOJET VERTICAL
NAVIGATION PLANNING
INFORMATION**

Orlando Intl Landing South: Expect clearance to cross at 13,000'.
Orlando Intl Landing North: Expect clearance to cross at 10,000' and 250 KTS.



NOTE: Chart not to scale.

(CONTINUED ON FOLLOWING PAGE)

ORLANDO, FLORIDA

ORLANDO, FLORIDA

AL-571 (FAA)

ARRIVAL ROUTE DESCRIPTION

BOXKR TRANSITION (BOXKR.MINEE5): From over BOXKR INT via LAL R-250 to LAL VORTAC, then via LAL R-060 to MINEE INT. Thence. . . .

LA BELLE TRANSITION (LBV.MINEE5): From over LBV VORTAC via LBV R-334 to DOWNN INT, then via RSW R-003 to MINEE INT. Thence. . . .

LEE COUNTY TRANSITION (RSW.MINEE5): From over RSW VORTAC via RSW R-003 to MINEE INT. Thence. . . .

ST. PETERSBURG TRANSITION (PIE.MINEE5): From over PIE VORTAC via PIE R-126 to GUMMY INT, then via LAL R-250 to LAL VORTAC, then via LAL R-060 to MINEE INT. Thence. . . .

. . . . From over MINEE INT via LAL R-060 to UNITY INT, then via ORL R-200 to ORL VORTAC.

LEESBURG INTL: Expect radar vectors to airport after UNITY INT.

ALL OTHER AIRPORTS: Expect radar vectors to final approach course after UNITY INT.

SE-3, 31 OCT 2024 to 28 NOV 2024

SE-3, 31 OCT 2024 to 28 NOV 2024