

(PRIC4.PRICY4) 31OCT24

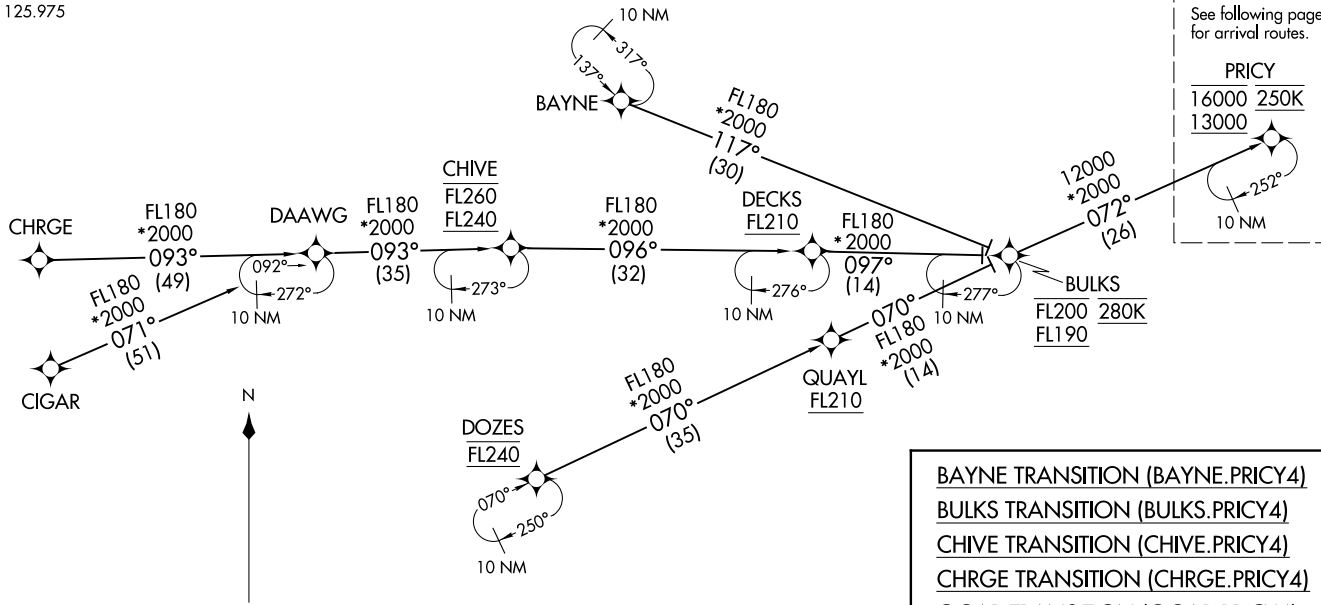
PRIC4 FOUR ARRIVAL (RNAV) Transition Routes

ORLANDO, FLORIDA

ORLANDO APP CON  
134.05 339.8  
ISM ATIS  
128.775  
LEE ATIS  
134.325  
MCO D-ATIS ARR  
121.25  
MLB ATIS  
132.55  
ORL ATIS  
127.25  
SFB ATIS  
125.975

NOTE: Jet aircraft only.  
NOTE: Do not file BULKS, CHIVE or DOZES Transitions - to be assigned by ATC.  
NOTE: Landing south use Rwy 18R Transition, Landing north use Rwy 36L Transition.

RNAV 1 - DME/DME/IRU or GPS.  
CHRG Transition - RNAV 1-GPS.  
CIGAR Transition - RNAV 1-GPS.  
RADAR required.



NOTE: Chart not to scale.

(CONTINUED ON FOLLOWING PAGE)

BAYNE TRANSITION (BAYNE.PRIC4)  
BULKS TRANSITION (BULKS.PRIC4)  
CHIVE TRANSITION (CHIVE.PRIC4)  
CHRG TRANSITION (CHRG.PRIC4)  
CIGAR TRANSITION (CIGAR.PRIC4)  
DOZES TRANSITION (DOZES.PRIC4)

(PRIC4.PRICY4) 24305

AL-571 (FAA)

ORLANDO, FLORIDA

# PRICY FOUR ARRIVAL (RNAV) Arrival Routes

ORLANDO, FLORIDA

ORLANDO APP CON  
 134.05 339.8  
 ISM ATIS  
 128.775  
 LEE ATIS  
 134.325  
 MCO D-ATIS ARR  
 121.25  
 MLB ATIS  
 132.55  
 ORL ATIS  
 127.25  
 SFB ATIS  
 125.975

LEESBURG INTL



LYENS  
 5000 210K

KMCO Ldg Rwys 17L/R, 18L/R

ORLANDO SANFORD INTL



HAMMY



EXEC



DVOLA



ORLANDO INTL



GIRAF  
 8000 220K

RNAV 1 - DME/DME/IRU or GPS.  
 CHRG Transition - RNAV 1-GPS.  
 CIGAR Transition - RNAV 1-GPS.

RADAR required.

- NOTE: Jet aircraft only.  
 NOTE: Do not file BULKS, CHIVE or DOZES Transitions - to be assigned by ATC.  
 NOTE: Landing south use Rwy 18R Transition, Landing north use Rwy 36L Transition.

ARHIP



KISSIMMEE GATEWAY



OTKEE  
 11000

Ldg LEE/SFB/ISM/MLB/ORL

EXBAN



TAYYE  
 12000 10000

MELBOURNE ORLANDO INTL



PRICY  
 16000 250K  
 13000

BOCCE



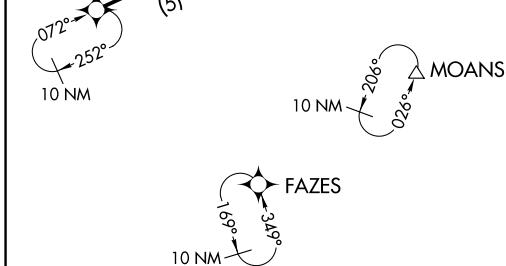
JUMBA



AMADS  
 9000

LORRA  
 7000 210K

KMCO Ldg Rwys 35L/R, 36L/R



NOTE: Chart not to scale.

(CONTINUED ON FOLLOWING PAGE)

SE-3, 31 OCT 2024 to 28 NOV 2024

# PRICY FOUR ARRIVAL (RNAV) Arrival Routes

ORLANDO, FLORIDA

ARRIVAL ROUTE DESCRIPTION

MCO: From PRICY on track 071° to BOCCE, then on track 068° to JUMBA.

LANDING MCO RUNWAYS 17L/R, 18L/R: From JUMBA on track 068° to cross TAYYE between 10000 and 12000, then on track 060° to ARHIP, then on track 006° to cross GIRAF at or above 8000 and at 220K, then on track 006° to DVOLA, then on track 006° to cross LYENS at 5000 and at 210K, then on track 006°. Expect RADAR vectors to final approach course.

LANDING MCO RUNWAYS 35L/R, 36L/R: From JUMBA on track 104° to cross AMADS at or below 9000, then on track 104° to cross LORRA at 7000 and at 210K, then on heading 096°. Expect RADAR vectors to final approach course.

LANDING LEE/SFB/ISM/MLB/ORL: From PRICY on track 071° to BOCCE, then on track 056° to cross OTKEE at 11000, then on track 056°. Expect RADAR vectors to final approach course.

SE-3, 31 OCT 2024 to 28 NOV 2024

SE-3, 31 OCT 2024 to 28 NOV 2024