

WAAS CH 63212 W18B	APP CRS 185°	Rwy Idg 12004 TDZE 94 Apt Elev 96
----------------------------------------	------------------------	--------------------------------------------------------------

RNAV (GPS) RWY 18R

ORLANDO INTL (MCO)

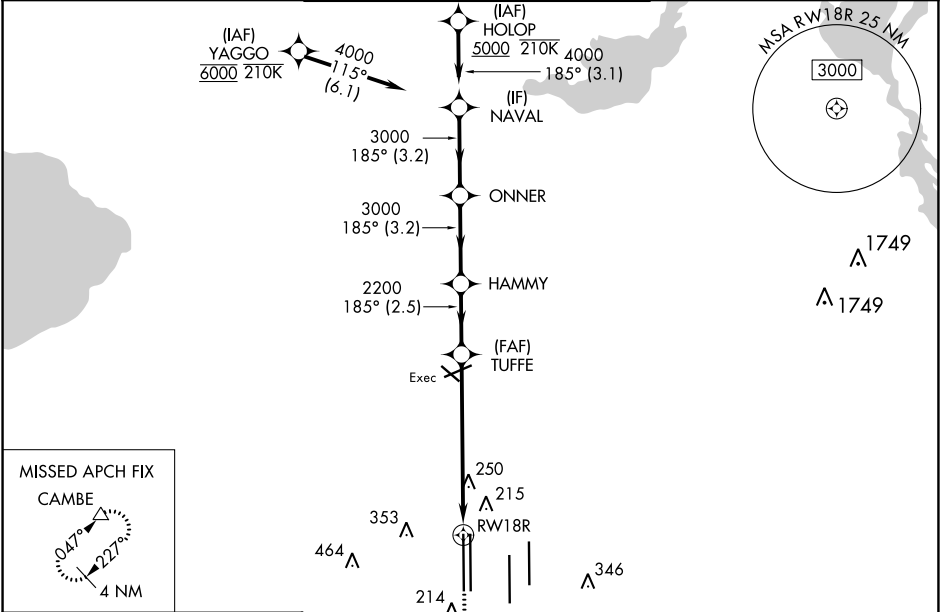
RNP APCH - GPS.

▼ LNAV procedure NA during simultaneous operations. Use of FD or AP required during simultaneous operations. Simultaneous approach authorized. For uncompensated Baro-VNAV systems, LNAV/VNAV NA below 1°C or above 54°C.



MISSED APPROACH: Climb to 500 then climbing right turn to 4000 direct CAMBE and hold, continue climb-in-hold to 4000.

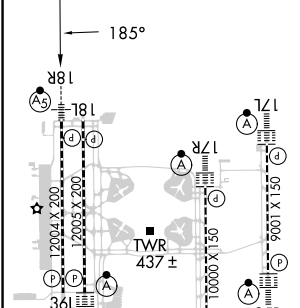
D-ATIS ARR 121.25 DEP 120.525	ORLANDO APP CON 124.8 307.0	ORLANDO TOWER 118.45 253.5 (Rwys 17L-35R, 17R-35L) 124.3 253.5 (Rwys 18L-36R, 18R-36L)	GND CON 126.4 (East) 121.8 (West)	CLNC DEL 134.7 341.7	CPDLC
---------------------------------------------------	---------------------------------------	------------------------------------------------------------------------------------------------------------	-------------------------------------------------------	------------------------------------------	-------



SE-3, 31 OCT 2024 to 28 NOV 2024

SE-3, 31 OCT 2024 to 28 NOV 2024

ELEV 96	D	TDZE 94
----------------	----------	----------------



HOLOP	NAVAL	ONNER	HAMMY	TUFFE	RWY 18R
5000	4000	3000	3000	2200	
GP 3.00° TCH 55		1.2 NM to RWY 18R			
3.2 NM		3.2 NM		2.5 NM	
3.2 NM		2.5 NM		5.2 NM	
3.2 NM		2.5 NM		5.2 NM	
3.2 NM		2.5 NM		5.2 NM	
3.2 NM		2.5 NM		5.2 NM	

HIRL all Rwys
REIL Rwy 36L
TDZ/CL Rwys 17L/R, 18R, 35L/R and 36R

CATEGORY	A	B	C	D
LPV DA	294/18		200 (200-½)	
LNAV/VNAV DA	390/24		296 (300-½)	
LNAV MDA	540/24 446 (500-½)		540/45 446 (500-¾)	
C CIRCLING	740-1 644 (700-1)		740-1¾ 644 (700-1¾) 740-2 644 (700-2)	