

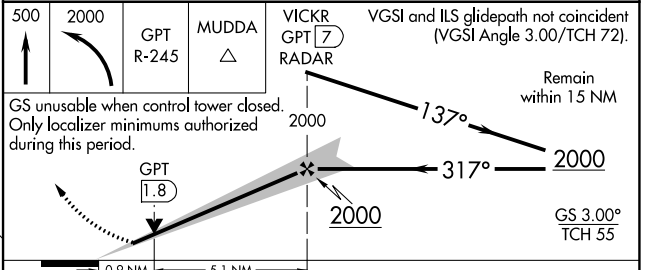
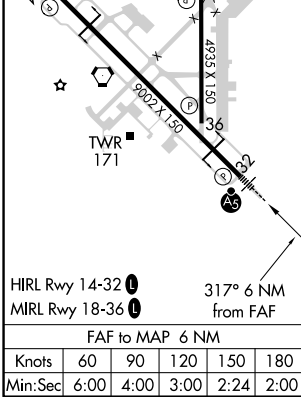
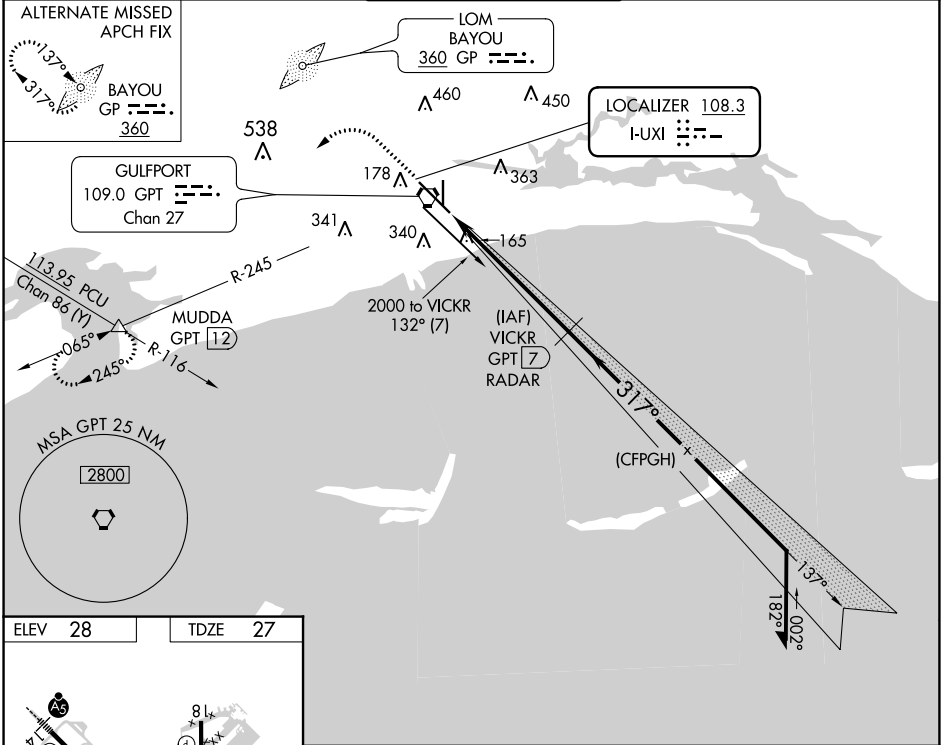
LOC I-UXI 108.3	APP CRS 317°	Rwy Idg 9002
		TDZE 27
		Apt Elev 28

ILS Z or LOC Z RWY 32

GULFPORT-BILOXI INTL (GPT)

DME or RADAR required, except DME required when control tower closed.		MALSR 	MISSED APPROACH: Climb to 500 then climbing left turn to 2000 on GPT VORTAC R-245 to MUDDA INT/GPT 12 DME and hold.
<p> Rwy 32 helicopter visibility reduction below RVR 4000 NA. Inop table does not apply to S-ILS 32. DME from GPT VORTAC. Simultaneous reception of I-UXI and GPT DME required. For inop ALS, increase S-LOC 32 all Cats visibility to RVR 5500.</p>			

ATIS 119.45	GULFPORT APP CON * 127.5 254.25	GULFPORT TOWER * 123.7 (CTAF) 0 339.8	GND CON 120.4 348.6	UNICOM 122.95
-----------------------	---	---	-------------------------------	-------------------------



CATEGORY	A	B	C	D	E
S-ILS 32		277/40	250 (300-¾)		
S-LOC 32		380/40	353 (400-¾)		
CIRCLING	520-1	640-1	760-2	760-2¼	760-2½
	492 (500-1)	612 (700-1)	732 (800-2)	732 (800-2¼)	732 (800-2½)

SC-4, 31 OCT 2024 to 28 NOV 2024

SC-4, 31 OCT 2024 to 28 NOV 2024