

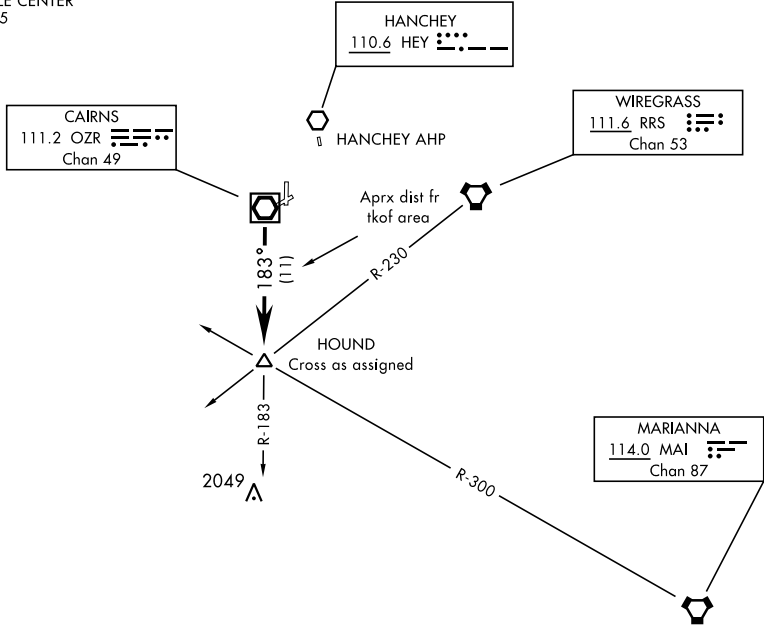
# HOUND-TWO DEPARTURE (HOUND2.HOUND)

CAIRNS AAF (KOZR)  
FORT NOVOSEL, ALABAMA

ATIS 111.2 316.15  
 CLNC DEL ★  
 118.075 380.1  
 GND CON ★  
 121.9 288.25  
 TOWER ★  
 135.2 (CTAF) 248.55  
 DEP CON ★  
 133.75 270.35  
 JACKSONVILLE CENTER  
 134.3 322.55

[USA]

610



SE-4, 31 OCT 2024 to 28 NOV 2024

SE-4, 31 OCT 2024 to 28 NOV 2024



## DEPARTURE ROUTE DESCRIPTION

TAKEOFF RWY 6, 18 or 36: Climbing right turn heading 205°...  
TAKEOFF RWY 24: Climbing left turn heading 120°...  
TAKEOFF PAD C OR G: Climb heading 178° to 1000, then right turn heading 205°...  
 Maintain 2000, expect clearance to requested altitude/flight level ten (10) minutes after departure.  
 ...intercept OZR VOR/DME R-183 to HOUND INT.

# HOUND-TWO DEPARTURE (HOUND2.HOUND)

FORT NOVOSEL, ALABAMA  
CAIRNS AAF (KOZR)