

RNAV (GPS) RWY 36

WAAS CH 63110 W36A	APCH CRS 004°	Rwy Idg TDZE Arprt Elev	5025 298 301
--	-------------------------	-------------------------------	---

[USA]

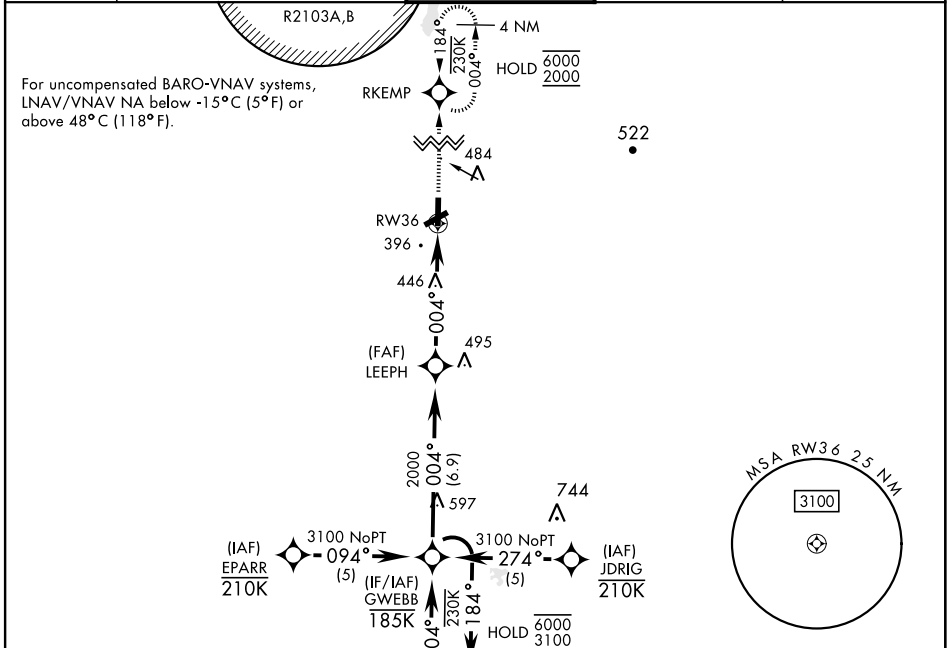
CAIRNS AAF (KOZR)

RNP APCH - GPS

▼ * Circling to rwy 24 NA at night.
Visibility reduction by helicopters NA.

MISSED APPROACH: Climb to 2000 direct RKEMP and hold.

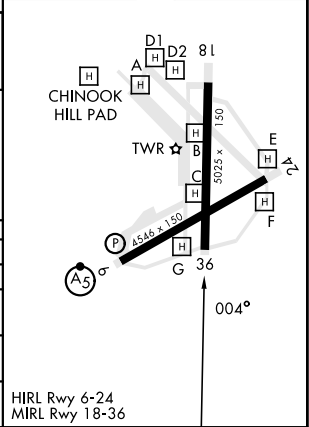
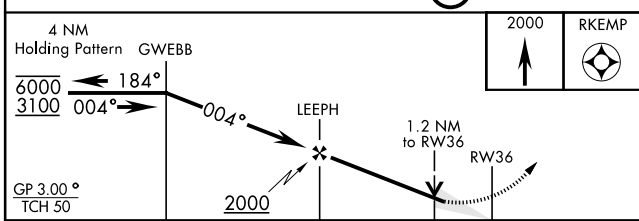
ATIS 111.2 316.15	APP CON ★ 021°-120° 125.4 327.125 121°-219° 133.75 270.35 220°-340° 133.45 239.275 341°-020° 121.1 319.25	TOWER ★ 135.2 (CTAF) 248.55	GND CON ★ 121.9 288.25	CLNC DEL ★ 118.075 380.1
---------------------------------------	---	---	--	--



SE-4, 31 OCT 2024 to 28 NOV 2024

SE-4, 31 OCT 2024 to 28 NOV 2024

ELEV	301	TDZE	298
------	-----	------	-----



CATEGORY	A	B	C	D
LPV DA	565-7 $\frac{7}{8}$	267	(300-7 $\frac{7}{8}$)	
LNAV/VNAV DA	634-1	336	(400-1)	
LNAV MDA	740-1	442 (500-1)	740-1 $\frac{7}{8}$ 442 (500-1 $\frac{7}{8}$)	
CIRCLING *	780-1 479 (500-1)	820-1 519 (600-1)	900-1 $\frac{1}{2}$ 599 (600-1 $\frac{1}{2}$)	900-2 599 (600-2)

HIRL Rwy 6-24
MIRL Rwy 18-36

RNAV (GPS) RWY 36