

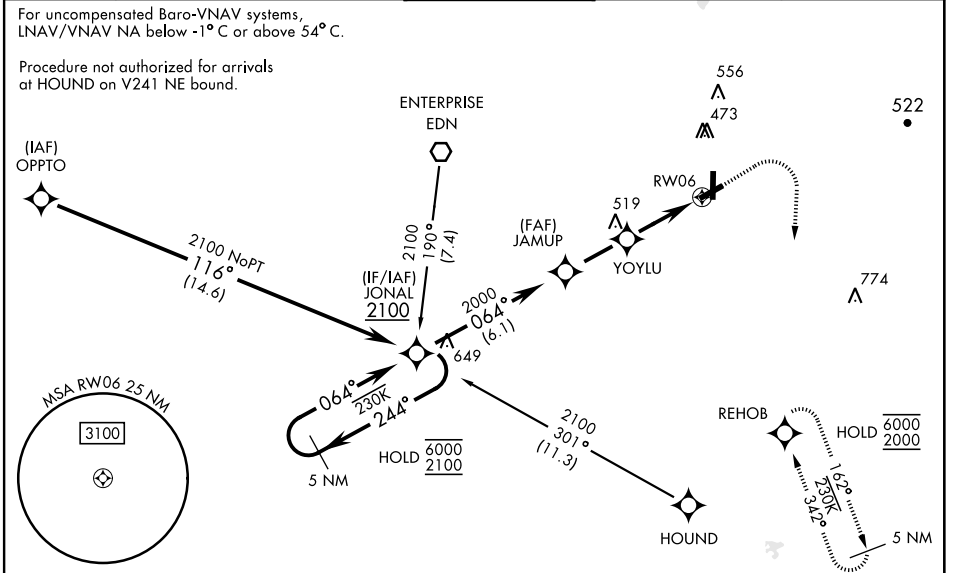
FORT NOVOSHEL, ALABAMA

# RNAV (GPS) RWY 6

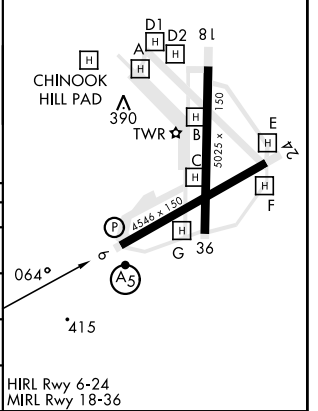
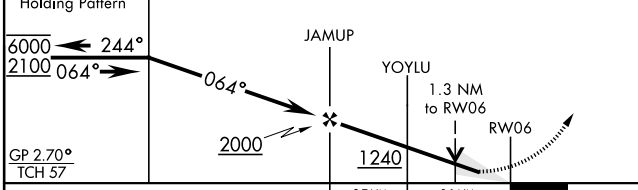
SBAS CH <b>50537</b> <b>W06A</b>	APCH CRS <b>064°</b>	Rwy Idg TDZE Arprt Elev <b>4546</b> <b>298</b> <b>301</b>	[USA]	CAIRNS AAF (KOZR)
--	-------------------------	--	-------	-------------------

RNP APCH - GPS	<p>▼ * When ALS inop, increase RVR to 40, vis to ¾ mile.          ** When ALS inop, increase RVR to 45, vis to 7/8 mile.          *** When ALS inop, increase CAT AB RVR to 55, vis to 1 mile;          CAT CD vis to 1 ¼ miles.          **** Circling not authorized to Rwy 24 at night. Circling          visibility reduction by helicopters not authorized.</p>	MALS R (A5)	MISSED APPROACH: Climb to 900 then climbing right turn to 2000 direct REHOB and hold.
----------------	--	----------------	--

ATIS <b>111.2</b> <b>316.15</b>	APP CON ★ 021°-120° <b>125.4</b> <b>327.125</b> 121°-219° <b>133.75</b> <b>270.35</b> 220°-340° <b>133.45</b> <b>239.275</b> 341°-020° <b>121.1</b> <b>319.25</b>	TOWER ★ <b>135.2</b> (CTAF) <b>248.55</b>	GND CON ★ <b>121.9</b> <b>288.25</b>	CLNC DEL★ <b>118.075</b> <b>380.1</b>
---------------------------------------	---	---	--	---



900	2000	REHOB	ELEV 301	TDZE 298
-----	------	-------	----------	----------



CATEGORY	A	B	C	D
LPV DA*	498/24	200	(200-½)	
LNAV/VNAV DA**	585/24	287	(300-½)	
LNAV MDA***	720/24	422 (500-½)	720/40	422 (500-¾)
CIRCLING****	780-1 479 (500-1)	820-1 519 (600-1)	900-1½ 599 (600-1½)	900-2 599 (600-2)

FORT NOVOSHEL, ALABAMA 31° 17' N-85° 43' W CAIRNS AAF (KOZR)

Amdt 2 23MAR23

# RNAV (GPS) RWY 6

SE-4, 31 OCT 2024 to 28 NOV 2024

SE-4, 31 OCT 2024 to 28 NOV 2024