

FORT NOVOSHEL, ALABAMA

VOR RWY 6

VOR/DME OZR 111.2 Chan 49	APCH CRS 056°	Rwy Idg TDZE Arprt Elev 4546 298 301
---	-------------------------	--

[USA]

CAIRNS AAF (KOZR)

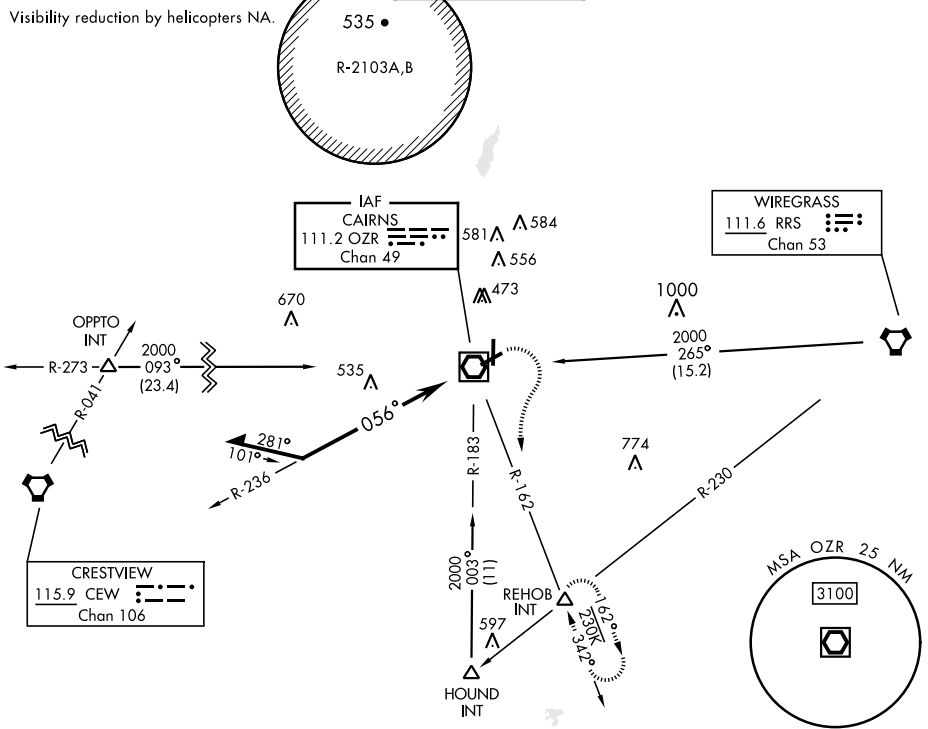
▼ * When ALS inop, increase CAT AB RVR to 55, vis to 1 mile; CAT CD vis to 1½ miles.
 ** Circling to RWY 24 at night not authorized.



MISSED APPROACH: Climbing right turn to 2000 via OZR VOR/DME R-162 to REHOB INT and hold; or when directed by ATC, climbing left turn to 2000 heading 290° within 10 NM (RADAR required).

ATIS 111.2 316.15	APP CON ★ 021°-120° 125.4 327.125 121°-219° 133.75 270.35 220°-340° 133.45 239.275 341°-020° 121.1 319.25	TOWER ★ 135.2 (CTAF) 248.55	GND CON ★ 121.9 288.25	CLNC DEL ★ 118.075 380.1
---------------------------------------	---	---	--	--

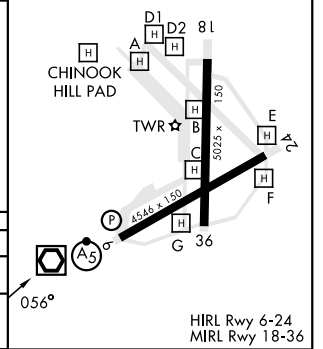
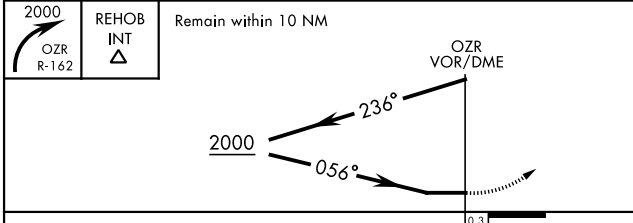
Visibility reduction by helicopters NA.



SE-4, 31 OCT 2024 to 28 NOV 2024

SE-4, 31 OCT 2024 to 28 NOV 2024

ELEV	301	TDZE	298
------	-----	------	-----



CATEGORY	A		B		C		D	
S-6 *	840/24	542	(600-½)		840/60	542	(600-1½)	
CIRCLING **	840-1	539	(600-1)		900-1½	599	(600-1½)	900-2
								599 (600-2)

FORT NOVOSHEL, ALABAMA
Amdt 16 20APR23

31° 17' N-85° 43' W

CAIRNS AAF (KOZR)

VOR RWY 6

HIRL Rwy 6-24
MIRL Rwy 18-36