

LOC I-CNW	APP CRS	Rwy Idg	8600
<b>110.7</b>	<b>174°</b>	TDZE	470
		Apt Elev	470

# ILS or LOC RWY 17L

TSTC WACO (CNW)

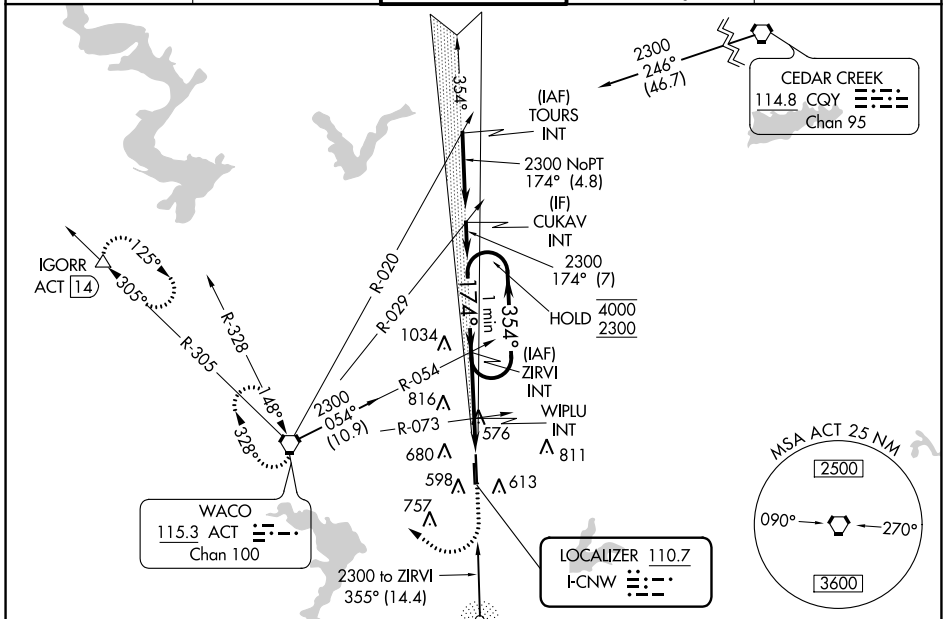
**NA** For inop ALS, increase S-ILS 17L Cat E visibility to  $\frac{3}{4}$  SM, and S-LOC 17L Cat E to  $\frac{1}{8}$  SM.

MALSR



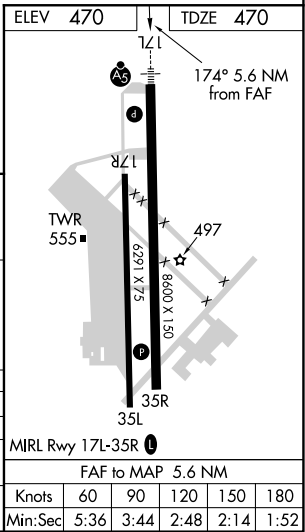
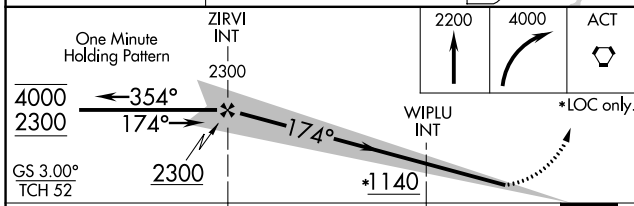
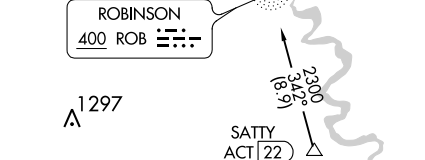
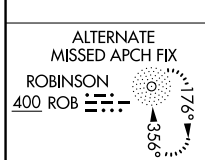
MISSED APPROACH: Climb to 2200 then climbing right turn to 4000 direct ACT VORTAC and hold.  
(TACAN aircraft continue on ACT VORTAC R-305 to IGORR /ACT 14 DME and hold SE, RT, 305° inbound)

AWOS-3PT	WACO APP CON *	TSTC TOWER *	GND CON	UNICOM
<b>134.225</b>	<b>127.65 227.125</b>	<b>124.0(CTAF) 255.7</b>	<b>121.70</b>	<b>122.95</b>



SC-3, 31 OCT 2024 to 28 NOV 2024

SC-3, 31 OCT 2024 to 28 NOV 2024



CATEGORY	A	B	C	D	E
S-ILS 17L	670- $\frac{1}{2}$ 200 (200- $\frac{1}{2}$ )				
S-LOC 17L	860- $\frac{1}{2}$	390 (400- $\frac{1}{2}$ )	860- $\frac{5}{8}$ 390 (400- $\frac{5}{8}$ )		
CIRCLING	940-1 470 (500-1)	1040-1 570 (600-1)	1040-1 $\frac{1}{2}$ 570 (600-1 $\frac{1}{2}$ )	1120-2 650 (700-2)	1180-2 $\frac{1}{2}$ 710 (800-2 $\frac{1}{2}$ )