

LOC/DME I-SZI 111.7 Chan 54	APP CRS 164°	Rwy Idg TDZE 430 Apt Elev 432
---	------------------------	---

ILS RWY 16C (CAT II & III)

SEATTLE-TACOMA INTL (SEA)

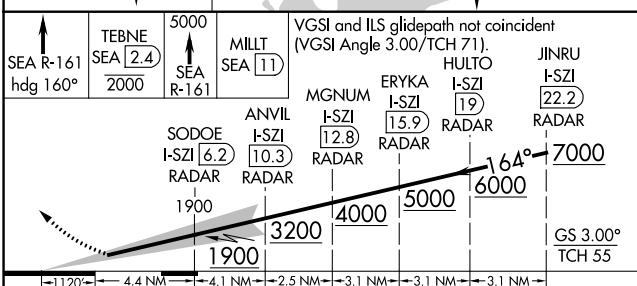
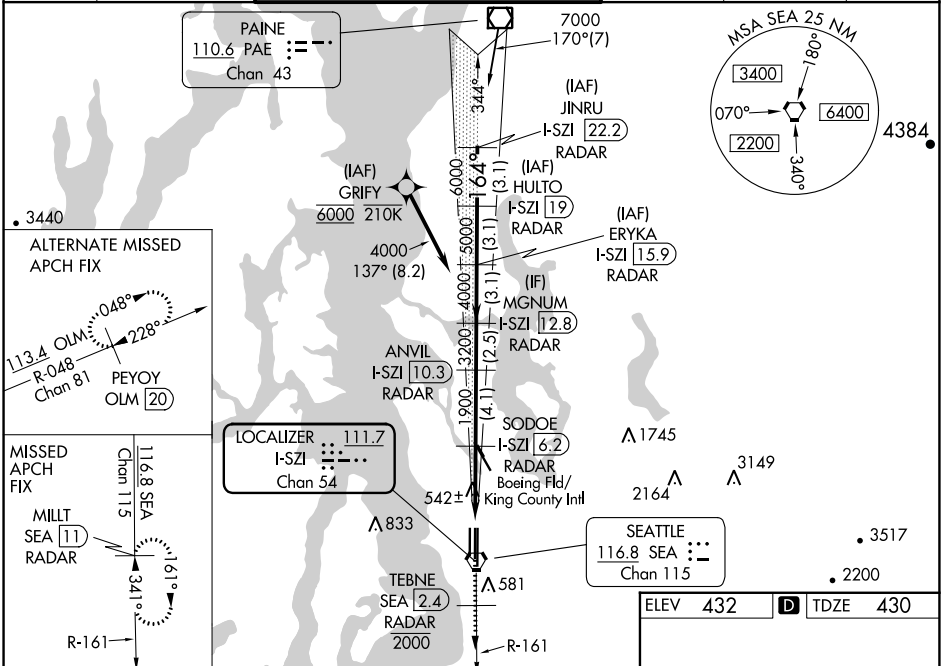
DME or RADAR required. From GRIFY:RNAV 1-GPS required.

Simultaneous approach authorized with Rwy 16R. Simultaneous operations require use of vertical guidance, maintain last assigned altitude until established on glideslope. Cat II: RVR 1000 authorized with specific OPSPEC, MSPEC, or LOA approval and use of Autoland or HUD to touchdown.

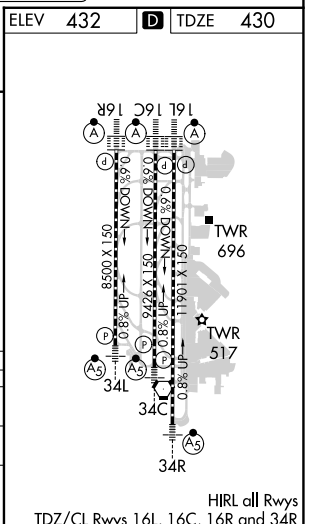
ALSF-2

MISSED APPROACH: Climb on heading 160° and SEA VORTAC R-161 to cross TEBNE/SEA 2.4 DME/RADAR at or below 2000, then climb to 5000 on SEA VORTAC R-161 to MILLT/SEA 11 DME/RADAR and hold, continue climb-in-hold to 5000.

D-ATIS 118.0	SEATTLE APP CON 133.65 273.45	SEATTLE TOWER 119.9 239.3 (Rwys 16L, 16C, 34C, 34R) 120.95 239.3 (Rwys 16R, 34L)	GND CON 121.7	CLNC DEL 128.0	CPDLC
------------------------	---	--	-------------------------	--------------------------	-------



SEA R-161 hdg 160°	TEBNE SEA 2.4 2000	5000 SEA R-161	MILLT SEA 11	VGSI and ILS glidepath not coincident (VGSI Angle 3.00/TCH 71).																												
SODOE I-SZI 6.2 RADAR	ANVIL I-SZI 10.3 RADAR	MGNM I-SZI 12.8 RADAR	ERYKA I-SZI 15.9 RADAR	HULTO I-SZI 19 RADAR																												
JINRU I-SZI 22.2 RADAR	<table border="1"> <tr> <td>1120°</td> <td>4.4 NM</td> <td>4.1 NM</td> <td>2.5 NM</td> <td>3.1 NM</td> <td>3.1 NM</td> <td>3.1 NM</td> </tr> <tr> <td>CATEGORY</td> <td>A</td> <td>B</td> <td>C</td> <td>D</td> <td></td> <td></td> </tr> <tr> <td>S-ILS 16C</td> <td colspan="6">CAT II RA 126/12 100 DA 530</td> </tr> <tr> <td>S-ILS 16C</td> <td colspan="6">CAT III RVR 03</td> </tr> </table>				1120°	4.4 NM	4.1 NM	2.5 NM	3.1 NM	3.1 NM	3.1 NM	CATEGORY	A	B	C	D			S-ILS 16C	CAT II RA 126/12 100 DA 530						S-ILS 16C	CAT III RVR 03					
1120°	4.4 NM	4.1 NM	2.5 NM	3.1 NM	3.1 NM	3.1 NM																										
CATEGORY	A	B	C	D																												
S-ILS 16C	CAT II RA 126/12 100 DA 530																															
S-ILS 16C	CAT III RVR 03																															



NW-1, 31 OCT 2024 to 28 NOV 2024

NW-1, 31 OCT 2024 to 28 NOV 2024