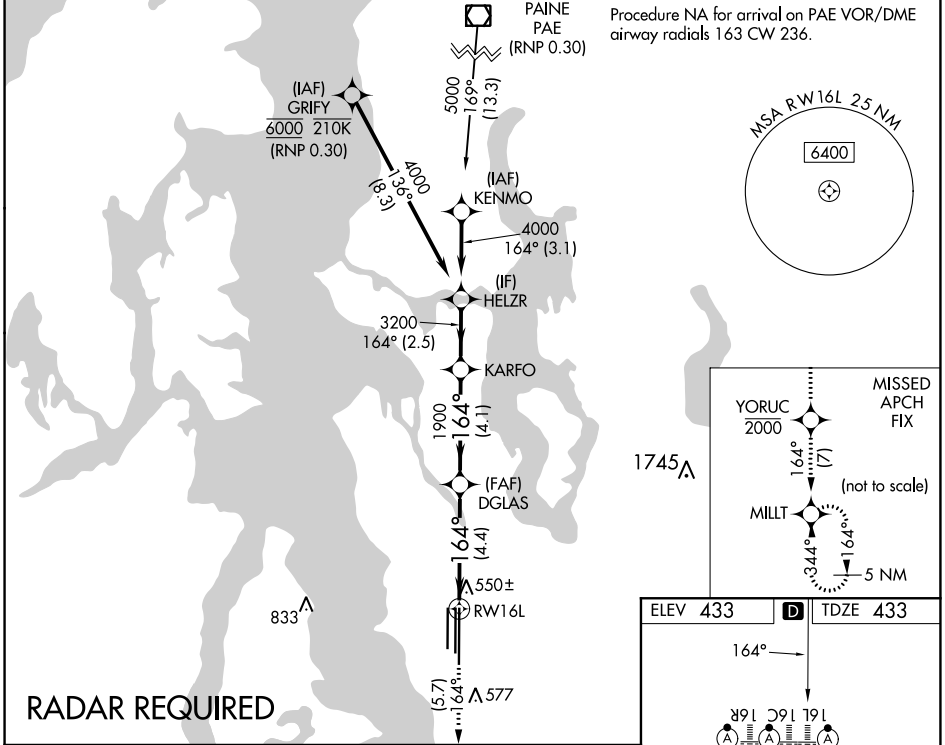


APP CRS	Rwy Idg	11901
164°	TDZE	433
	Apt Elev	433

RNAV (RNP) Z RWY 16L

SEATTLE-TACOMA INTL (SEA)

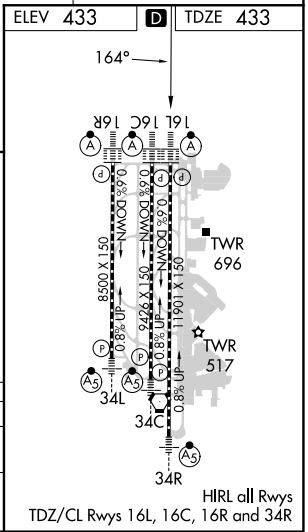
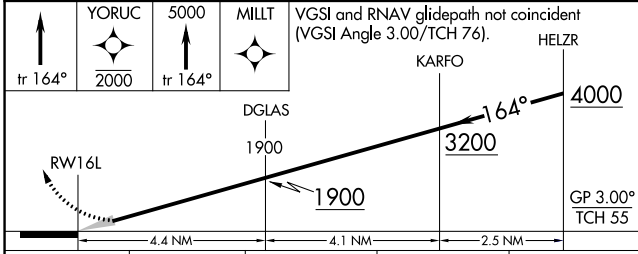
<p>▼ For uncompensated Baro-VNAV systems, procedure NA below -6°C (22°F) or above 54°C (130°F). Simultaneous approach authorized with Rwy 16R. GPS required. Use of FD or AP providing RNAV track guidance required during simultaneous operations. For inop ALS, increase RNP 0.30 all Cats visibility to 1 3/8 mile.</p>	ALSIF-2	<p>MISSED APPROACH: Climb on track 164° to cross YORUC at or below 2000, then climb to 5000 on track 164° to MILLT and hold, continue climb-in-hold to 5000.</p>
	<p>D-ATIS 118.0</p> <p>SEATTLE APP CON 133.65 273.45</p>	



NW-1, 31 OCT 2024 to 28 NOV 2024

NW-1, 31 OCT 2024 to 28 NOV 2024

RADAR REQUIRED



CATEGORY	A	B	C	D
RNP 0.30 DA	842/45 409 (500-7/8)			
AUTHORIZATION REQUIRED				