

WAAS CH 42710 W34D	APP CRS 344°	Rwy Idg 11901 TDZE 372 Apt Elev 433
--	------------------------	--

RNAV (GPS) Y RWY 34R

SEATTLE-TACOMA INTL (SEA)

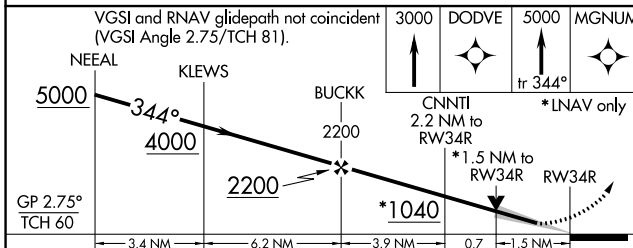
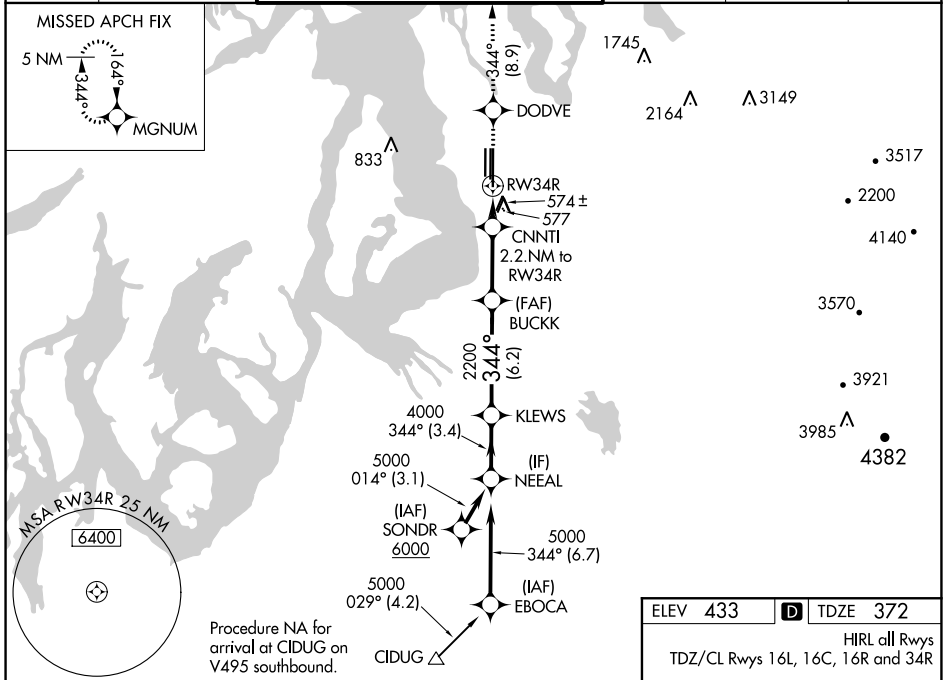
▼ DME/DME RNP-0.3 NA. For uncompensated Baro-VNAV systems, LNAV/VNAV NA below -6°C (22°F) or above 54°C (130°F). LNAV procedure NA during simultaneous operations. Use of FD or AP providing RNAV track guidance required during simultaneous operations. Simultaneous approach authorized with Rwy 34L. For nonoperative ALS, increase LNAV Cat C and D visibility to 1/3 SM. # RVR 1800 authorized with use of FD or AP or HUD to DA.

MALSR

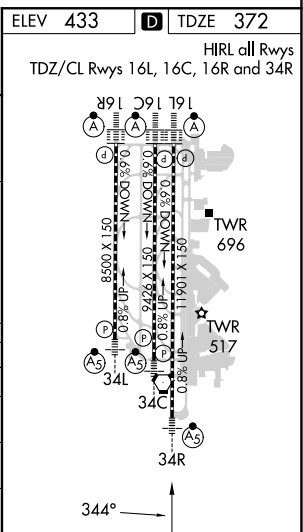


MISSED APPROACH: Climb to 3000 direct DODVE then climb to 5000 on track 344° to MGNUM and hold, continue climb-in-hold to 5000.

D-ATIS 118.0	SEATTLE APP CON 133.65 273.45	SEATTLE TOWER 119.9 239.3 (Rwys 16L, 16C, 34C, 34R) 120.95 239.3 (Rwys 16R, 34L)	GND CON 121.7	CLNC DEL 128.0	CPDLC
------------------------	---	--	-------------------------	--------------------------	-------



CATEGORY	A	B	C	D
LPV DA#		572/24	200 (200-1/2)	
LNAV/VNAV DA		915-1 1/2	543 (500-1 1/2)	
LNAV MDA	840/24	468 (500-1/2)	840/50	468 (500-1)
CIRCLING	1000-1	567 (600-1)	1000-1 1/2 567 (600-1 1/2)	1000-2 567 (600-2)



NW-1, 31 OCT 2024 to 28 NOV 2024

NW-1, 31 OCT 2024 to 28 NOV 2024