

LOC I-ILN <b>110.7</b>	APP CRS <b>224°</b>	Rwy Idg <b>10701</b> TDZE <b>1077</b> Apt Elev <b>1077</b>
---------------------------	------------------------	--

# ILS RWY 22R (SA CAT I)

WILMINGTON AIR PARK (ILN)

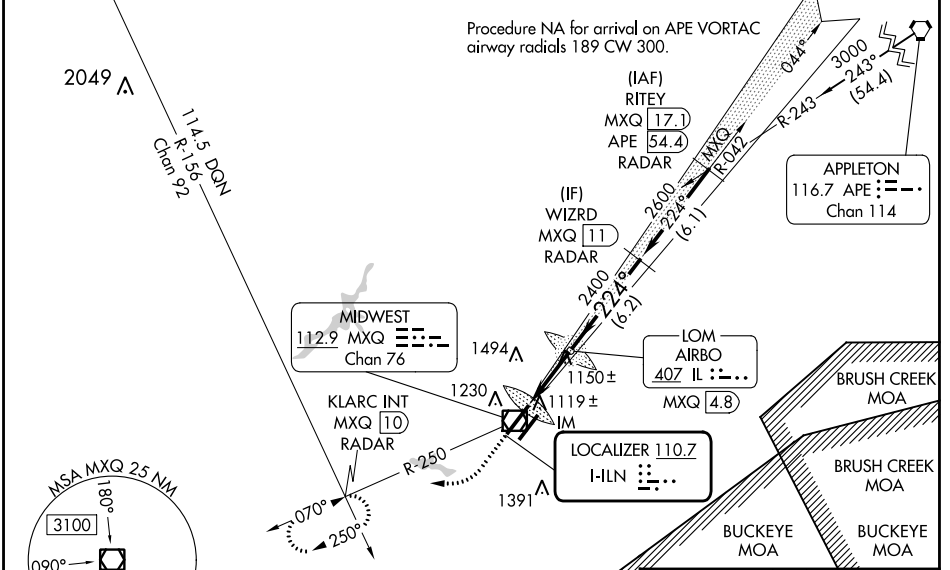
DME or RADAR required for procedure entry.

Simultaneous approach authorized. Requires specific OPSPEC, MSPEC, or LOA approval. Procedure NA when control tower closed. DME from MXQ VOR/DME. DME use requires simultaneous reception of I-ILN and MXQ DME.

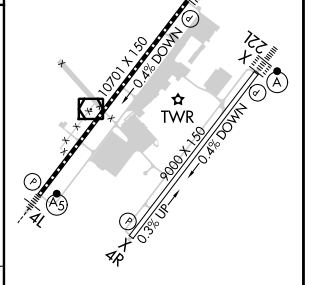
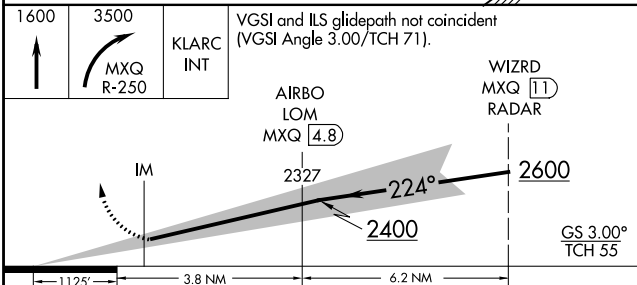
ALSF-2

MISSED APPROACH: Climb to 1600 then climbing right turn to 3500 on MXQ VOR/DME R-250 to KLARC INT/MXQ 10 DME/RADAR and hold, continue climb-in-hold to 3500.

D-ATIS <b>124.925</b>	COLUMBUS APP CON <b>118.85 269.275</b>	WILMINGTON TOWER <b>119.475</b>	GND CON <b>121.6</b>	CLNC DEL <b>128.85</b>
--------------------------	---	------------------------------------	-------------------------	---------------------------



ELEV 1077	TDZE 1077
-----------	-----------



CATEGORY	A	B	C	D
S-ILS 22R	RA 148/14		150 DA 1227	

**SA CATEGORY I ILS - SPECIAL AIRCREW & AIRCRAFT CERTIFICATION REQUIRED**

TDZ/CL Rwys 22L and 22R  
HIRL Rwys 4L-22R and 4R-22L

EC-2, 31 OCT 2024 to 28 NOV 2024

EC-2, 31 OCT 2024 to 28 NOV 2024