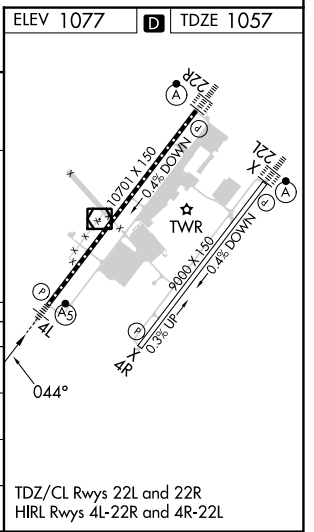
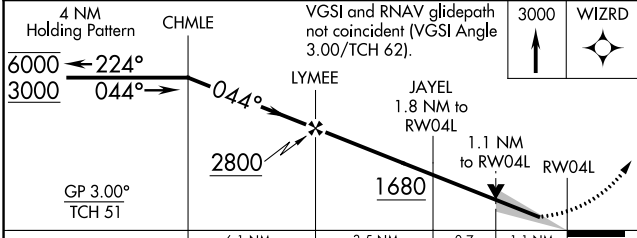
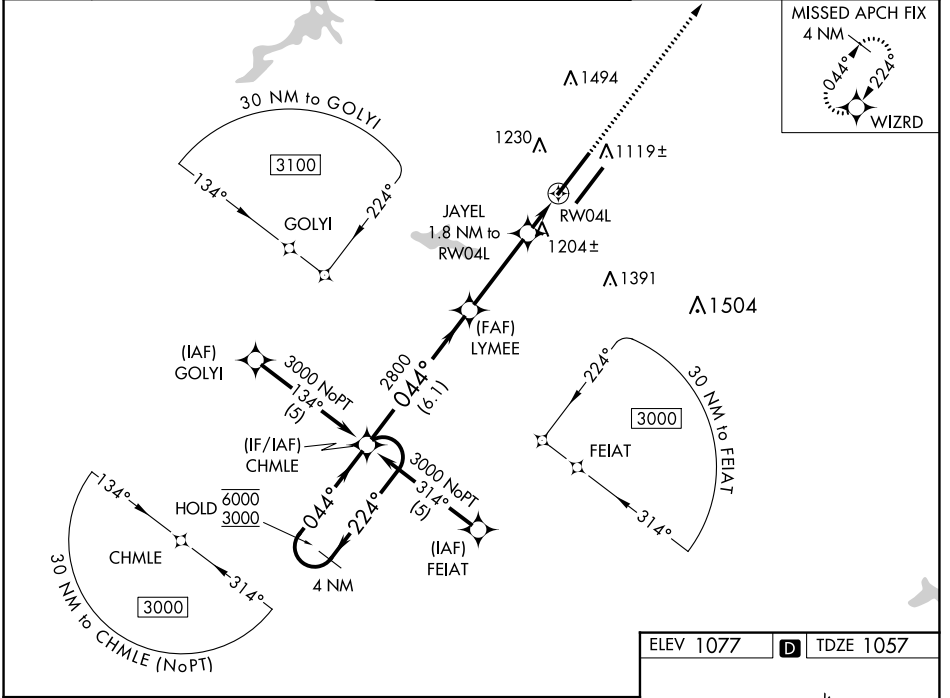


WAAS CH 62914 W04A	APP CRS 044°	Rwy Idg 10701 TDZE 1057 Apt Elev 1077
----------------------------------------	------------------------	------------------------------------------------------------------

RNAV (GPS) RWY 4L

WILMINGTON AIR PARK (ILN)

RNP APCH.		MALSR	MISSED APPROACH: Climb to 3000 direct WIZRD and hold.
<p>▼ For uncompensated Baro-VNAV systems, LNAV/VNAV NA below -17°C or above 54°C. ▲ For inop ALS, increase LNAV Cats A/B visibility to RVR 5500 and LNAV Cats C/D visibility to RVR 6000. *1800 RVR authorized with use of FD or AP or HUD to DA.</p>		AS	
D-ATIS 124.925	COLUMBUS APP CON 118.85 269.275	WILMINGTON TOWER 119.475	GND CON 121.6
			CLNC DEL 128.85



CATEGORY	A	B	C	D
LPV DA *	1257/24		200 (200-½)	
LNAV/VNAV DA	1505/45		448 (500-¾)	
LNAV MDA	1460/24 403 (400-½)		1460/40	403 (400-¾)
CIRCLING	1540-1 463 (500-1)		1860-2¼ 783 (800-2¼)	1860-2½ 783 (800-2½)

EC-2, 31 OCT 2024 to 28 NOV 2024

EC-2, 31 OCT 2024 to 28 NOV 2024