

WAAS CH <b>86919</b> <b>W17A</b>	APP CRS <b>174°</b>	Rwy Idg TDZE Apt Elev	<b>5997</b> <b>1073</b> <b>1073</b>
--	------------------------	-----------------------------	---

# RNAV (GPS) RWY 17

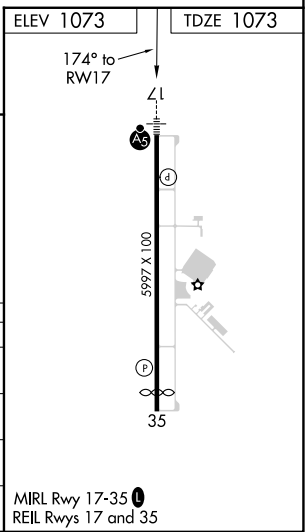
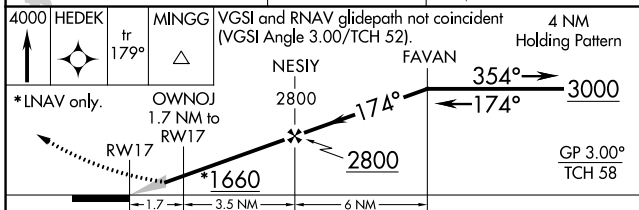
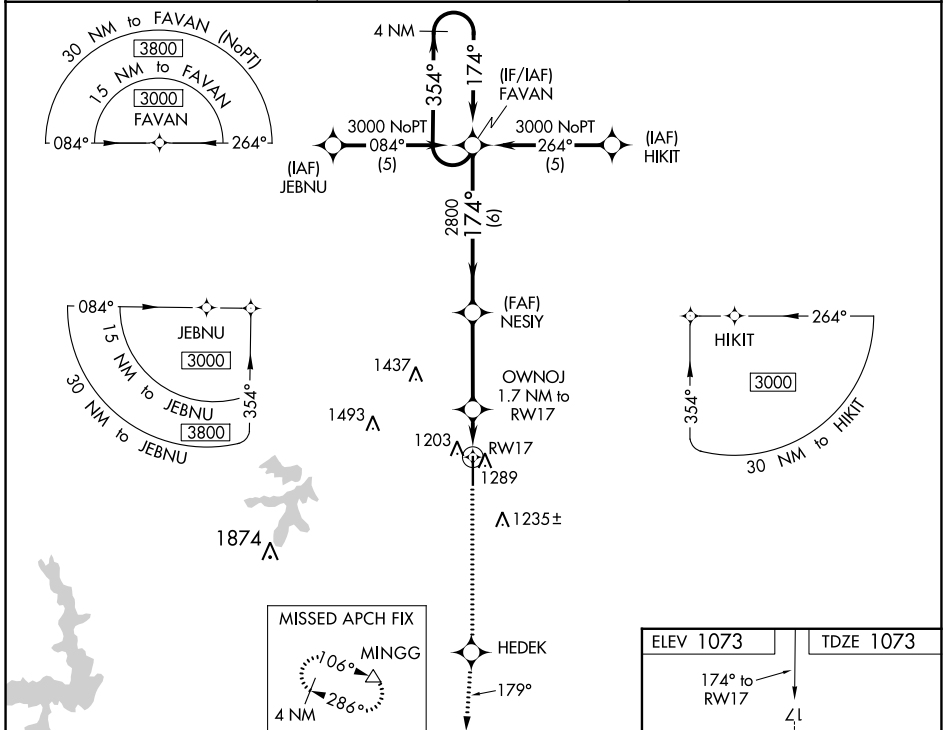
SHAWNEE RGNL (SNL)

**⚠** Baro-VNAV NA when using Seminole altimeter setting. For uncompensated Baro-VNAV systems, LNAV/VNAV NA below -17°C (2°F) or above 54°C (130°F).  
**⚠** DME/DME RNP-0.3 NA. When local altimeter setting not received, use Seminole altimeter setting: increase LPV DA to 1313 feet; increase LNAV/VNAV DA to 1487 feet and visibility ¼ SM; increase all MDAs 40 feet and visibility Cat C ¼ SM.



**MISSED APPROACH:** Climb to 4000 direct HEDEK and on track 179° to MINGG and hold.

AWOS-3 <b>118.275</b>	OKE CITY APP CON <b>120.45 288.325</b>	UNICOM <b>122.7 (CTAF)</b>
--------------------------	---	-------------------------------



CATEGORY	A	B	C	D
LPV DA	1273-½	200 (200-½)		NA
LNAV/VNAV DA	1447-¾	374 (400-¾)		NA
LNAV MDA	1540-½	467 (500-½)	1540-¾ 467 (500-¾)	NA
<b>C</b> CIRCLING	1600-1	527 (600-1)	1640-1½ 567 (600-1½)	NA

SC-1, 31 OCT 2024 to 28 NOV 2024

SC-1, 31 OCT 2024 to 28 NOV 2024