

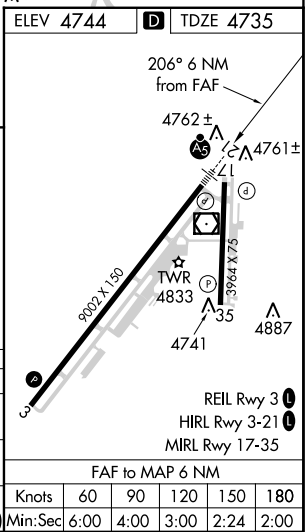
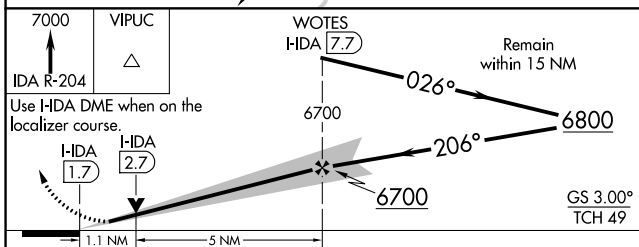
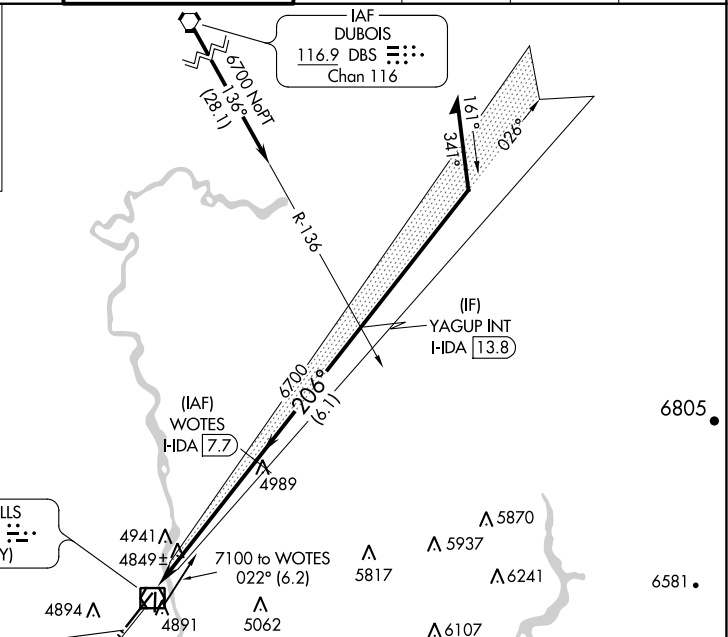
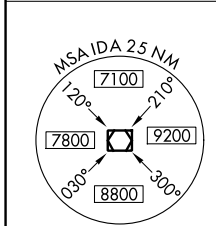
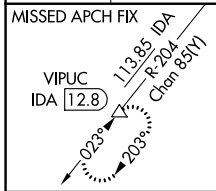
LOC/DME I-HDA <b>111.1</b> Chan <b>48</b>	APP CRS <b>206°</b>	Rwy Idg TDZE Apt Elev	<b>9002</b> <b>4735</b> <b>4744</b>
---	------------------------	-----------------------------	---

# ILS or LOC RWY 21

IDAHO FALLS RGNL (IDA)

DME required.	MALSR	MISSED APPROACH: Climb to 7000 on IDA VOR/DME R-204 to VIPUC/12.8 DME and hold.
<p>▼ Circling to Rwy 35 NA at night. For inop ALS, increase S-ILS 21 Cat E visibility to RVR 4000, and S-LOC 21 Cat E visibility to RVR 6000.</p> <p>▲</p>		

ATIS <b>135.325</b>	SALT LAKE CENTER <b>128.35 239.25</b>	IDAHO FALLS TOWER * <b>118.5 (CTAF) 0 257.8</b>	GND CON <b>121.7</b>	CLNC DEL <b>121.7</b>	GCO <b>121.725</b>	UNICOM <b>122.95</b>
------------------------	--	--	-------------------------	--------------------------	-----------------------	-------------------------



CATEGORY	A	B	C	D	E
S-ILS 21	4985/24		250 (300-½)		
S-LOC 21	5120/24	385 (400-½)	5120/35	385 (400-¾)	
CIRCLING	5200-1 456 (500-1)	5300-1 556 (600-1)	5400-1¾ 656 (700-1¾)	5420-2¼ 676 (700-2¼)	5420-2½ 676 (700-2½)

ELEV 4744	TDZE 4735
Knots	60 90 120 150 180
Min:Sec	6:00 4:00 3:00 2:24 2:00

NW-1, 31 OCT 2024 to 28 NOV 2024

NW-1, 31 OCT 2024 to 28 NOV 2024