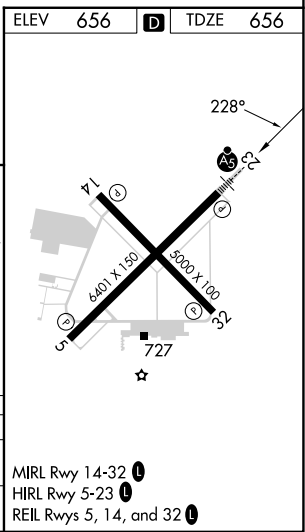
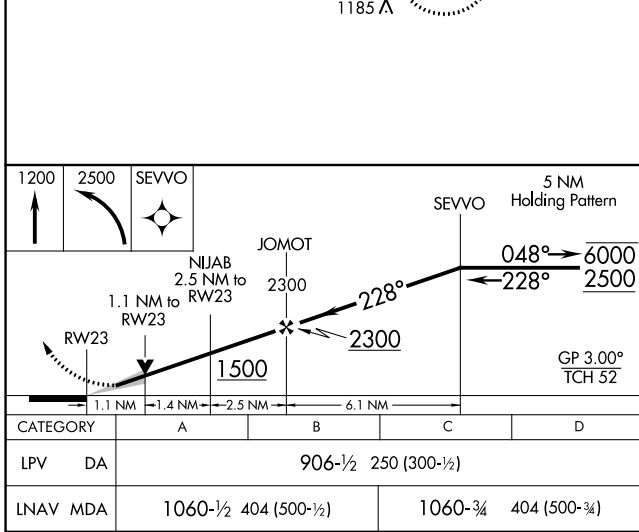
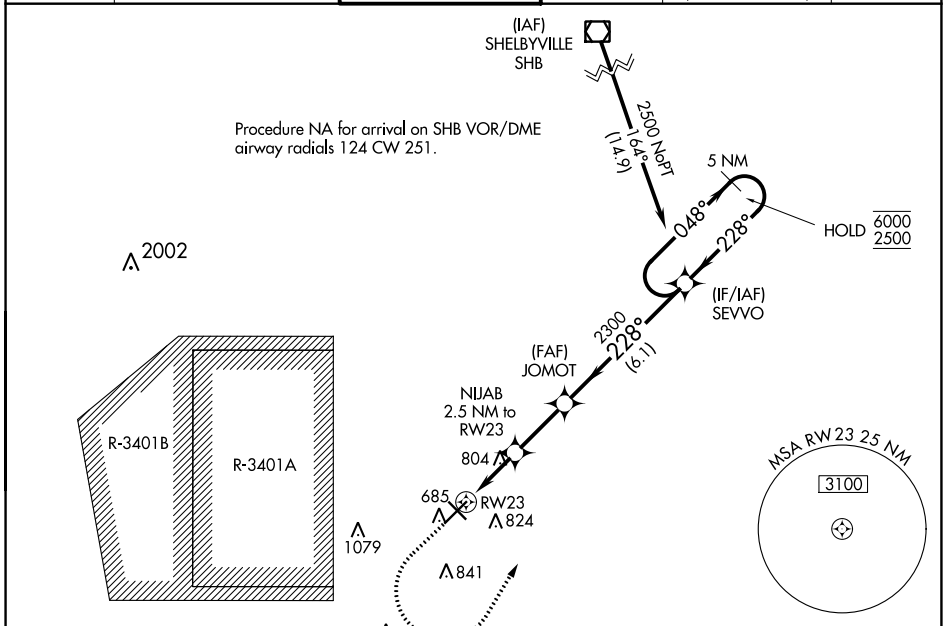


| | | | |
|--|------------------------|-----------------------------|---|
| WAAS CH 90399 W23A | APP CRS 228° | Rwy Idg TDZE Apt Elev | 6401 656 656 |
|--|------------------------|-----------------------------|---|

RNAV (GPS) RWY 23

COLUMBUS MUNI (BAK)

| | | | | | |
|--|---|---|--|--|-------------------------|
| RNP APCH - GPS. | | MALSR | MISSED APPROACH: Climb to 1200, then climbing left turn to 2500 direct SEVVO and hold. | | |
| For inop ALS, increase LNAV Cat C/D visibility to 1½ SM. | | | | | |
| AWOS-3 119.75 | INDIANAPOLIS APP CON 134.85 317.8 | COLUMBUS TOWER ★ 118.6 (CTAF) | GND CON 121.6 | CLNC DEL 134.85 (When twr closed) | UNICOM 122.95 |



EC-2, 31 OCT 2024 to 28 NOV 2024

EC-2, 31 OCT 2024 to 28 NOV 2024