

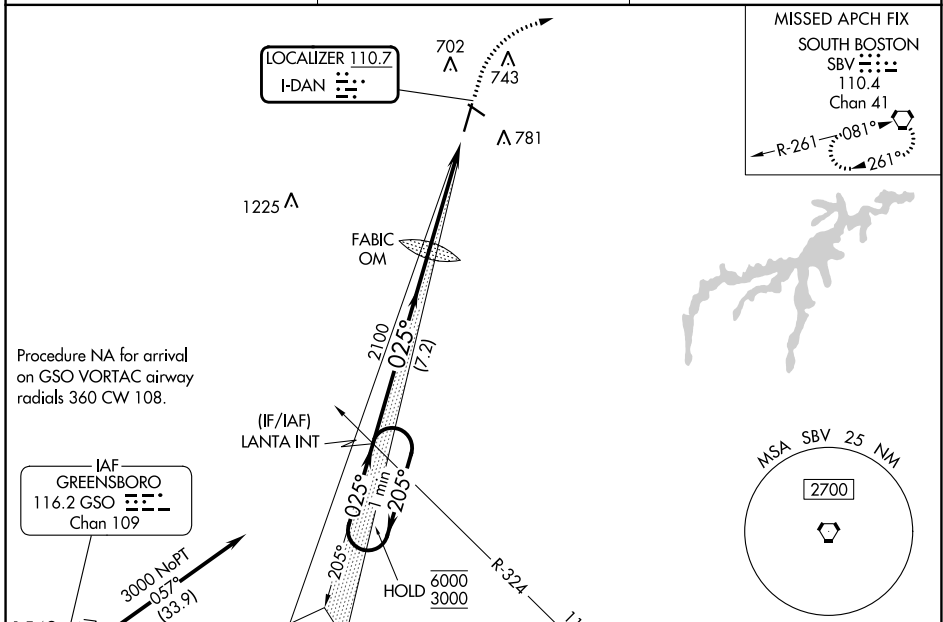
LOC I-DAN 110.7	APP CRS 025°	Rwy Idg TDZE Apt Elev	5600 559 571
---------------------------	------------------------	-----------------------------	---

ILS or LOC RWY 2

DANVILLE RGNL (DAN)

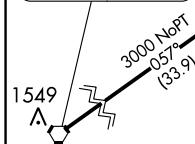
<p>For inop ALS, increase S-LOC 2 Cat C/D visibility to 1 3/8 SM.</p>	<p>MALS</p>	<p>MISSED APPROACH: Climb to 2000 then climbing right turn to 3000 direct SBV VORTAC and hold.</p>

ASOS 128.125	WASHINGTON CENTER 124.05 352.0	UNICOM 123.05 (CTAF)
------------------------	--	--------------------------------

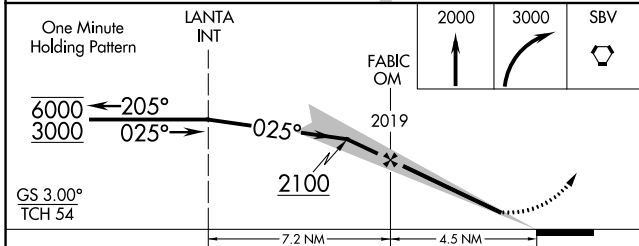


Procedure NA for arrival on GSO VORTAC airway radials 360 CW 108.

IAF
GREENSBORO
116.2 GSO
Chan 109



ELEV 571		TDZE 559
----------	--	----------



CATEGORY	A	B	C	D
S-ILS 2	759-1/2 200 (200-1/2)			
S-LOC 2	1020-1/2	461 (500-1/2)	1020-1	461 (500-1)
CIRCLING	1120-1	549 (600-1)	1120-1 1/2	1200-2
			549 (600-1 1/2)	629 (700-2)

HIRL Rwy 2-20

MIRL Rwy 13-31

REIL Rwy 13, 20 and 31

FAF to MAP 4.5 NM

Knots	60	90	120	150	180
Min:Sec	4:30	3:00	2:15	1:48	1:30

NE-3, 31 OCT 2024 to 28 NOV 2024

NE-3, 31 OCT 2024 to 28 NOV 2024