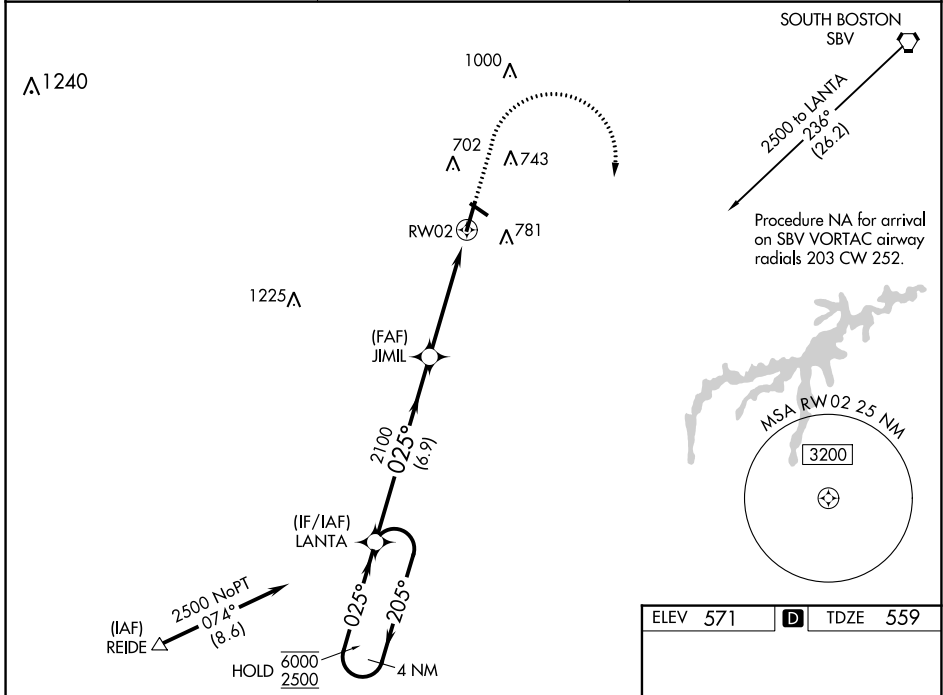


WAAS CH 42916 W02A	APP CRS 025°	Rwy ldg TDZE Apt Elev	5600 559 571
--	------------------------	-----------------------------	---

RNAV (GPS) RWY 2

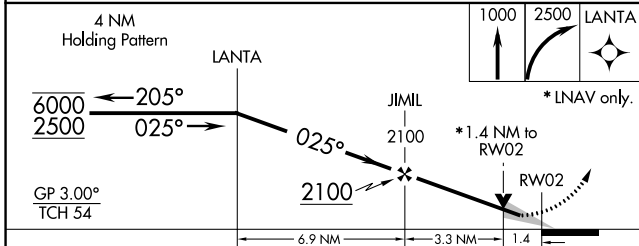
DANVILLE RGNL (DAN)

RNP APCH.		MALSRL	MISSED APPROACH: Climb to 1000 then climbing right turn to 2500 direct LANTA and hold.
<p>▽ For uncompensated Baro-VNAV systems, LNAV/VNAV NA below -14°C or above 54°C. For inop ALS increase LNAV/VNAV all Cats visibility to 1 SM. Increase LNAV Cats C/D visibility to 1½ SM.</p>			
ASOS 128.125	WASHINGTON CENTER 124.05 352.0	UNICOM 123.05 (CTAF) 0	

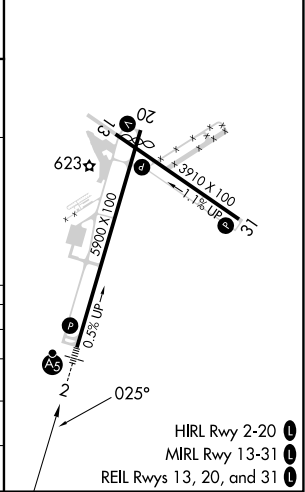


NE-3, 31 OCT 2024 to 28 NOV 2024

NE-3, 31 OCT 2024 to 28 NOV 2024



ELEV 571	D	TDZE 559
----------	----------	----------



CATEGORY	A	B	C	D
LPV DA		759-½	200 (200-½)	
LNAV/VNAV DA		924-⅝	365 (400-⅝)	
LNAV MDA	1040-½ 481 (500-½)		1040-1 481 (500-1)	
C CIRCLING	1120-1 549 (600-1)		1120-1½ 549 (600-1½)	1200-2 629 (700-2)

HIRL Rwy 2-20 **0**
MIRL Rwy 13-31 **0**
REIL Rws 13, 20, and 31 **0**